



Thurston Conservation District Board of Supervisors Work Session Topic List & Board Meeting Agenda

March 25, 2026, 5:00 pm - 7:55 pm

Zoom Meeting Link:

<https://zoom.us/j/91658577844?pwd=cDgvaC9jcWRBU0luUFFHc1lrb3hLQT09>

Passcode: 2918

Meeting ID: 916 5857 7844

Call in: 1-253-215-8782

Work Session Topic List

5:00 pm – 6:00 pm

1. Topic List Review, All
2. Staff Presentation: TCD's Growing Habitat Restoration Program, *Paul Cereghino*
3. Annual Plan Development, *Executive Director Moorehead*
4. Legislative Update, *Executive Director Moorehead*
5. Strategic Planning Outreach, *Executive Director Moorehead*
6. Conservation and Education Center (CEC) Development, *All*
7. Important *Updates* & Announcements
 - a. Board of Supervisors, *All*
 - b. Executive Director, *Sarah Moorehead (Executive Director)*

Board Meeting

6:30 pm – 7:55 pm

1. **Welcome, Introductions, Audio Recording Announcement** **6:30 PM**
5 minutes
2. **Agenda Review** **6:35 PM**
5 minutes
3. **Consent Agenda – Action Item** **6:40 PM**
 - A. February 25, 2026, Board Work Session & Meeting Minutes *5 minutes*
 - B. March 2026 Financial Report
 - C. WA State Dept of Ecology Scatter Creek Funding Agreement
 - D. RCO Thompson Creek Vendor Agreement
4. **Public Comment** **6:45 PM**
*Three minutes per person *10 minutes*
5. **Partner Reports (if present)** **6:55 PM**

- A. Natural Resources Conservation Service, (NRCS) *TBD* 15 minutes
- B. Washington State Conservation Commission (WACC), *Josh Giuntoli*
- C. Washington Association of Conservation Districts (WACD), *Sarah Moorehead*

- 6. Governance, All – Action Item** **7:10 PM**
 - A. Rates and Charges Update 10 minutes
 - B. April 22, 2026 Work Session Topic List & Meeting Agenda Development

- 7. Executive Session: To consider the selection of a site or the acquisition of real estate** **7:20 PM**

RCW 42.30.110 (1b) To consider the selection of a site or the acquisition of real estate by lease or purchase when public knowledge regarding such consideration would cause a likelihood of increased price. 10 minutes

- 8. Executive Session Report Out – Action Item** **7:30 PM**

5 minutes

- 9. Executive Session: To discuss potential litigation** **7:35 PM**

RCW 42.30.110 (1)(i) to discuss with legal counsel representing the agency litigation or potential litigation. 15 minutes

- 10. Executive Session Report Out – Action Item** **7:50 PM**

5 minutes

- Adjourn** **7:55 PM**

- Informational Only Items:**
 - I. Executive Director’s Report
 - II. Strategic Plan Summary
 - III. 2026 Annual Plan Executive Summary
 - IV. 2026 Annual Plan Draft
 - V. 2026 Election Memo Update

Important Future Dates

April 2026

- TCD Cover Crop Termination Workshop, April 2
- TCD & Mason CD Forestry Field Day, Lacey April 18
- WACD Board Meeting 6:00 - 8:30 p.m. April 20
- TCD Board Work Session & Meeting 5:00 - 7:30 p.m. In-person and Virtual (Zoom) April 22
- TCD & Mason CD Cost Share 101, TCD Office, April 23
- 2026 South Puget Sound Regional Envirothon Competition April 23-4

May 2026

WACD Board Meeting 6:00- 8:30 p.m.	May 18
WSCC Meeting, South Yakima CD	May 20
Memorial Day, TCD Office Closed	May 25
TCD Board Work Session & Meeting 5:00 - 7:30 p.m. In-person and Virtual (Zoom)	May 27

June 2026

Annual WADE Training Conference, Leavenworth	June 8, 9, 10
WACD Board Meeting 6:00 - 8:30 p.m.	June 15
Juneteenth, TCD Office Closed	June 19
TCD Board Work Session & Meeting 5:00 - 7:30 p.m. In-person and Virtual (Zoom)	June 24

Item

3



Thurston Conservation District Consent Agenda Decision Sheet March 25, 2026 Board Meeting

-
- A. February 25, 2026 Board Meeting and Work Session Minutes
 - a. Proposed action: accept without amendment and approve.
 - b. Action was taken:
 - Passed Moved for discussion during meeting Tabled to a future meeting

 - B. March 2026 Financial Report
 - a. Proposed action: accept without amendment and approve.
 - b. Action was taken:
 - Passed Moved for discussion during meeting Tabled to a future meeting

 - C. WA State Dept of Ecology Scatter Creek Funding Agreement
 - a. Proposed action: accept without amendment and approve.
 - b. Action was taken:
 - Passed Moved for discussion during meeting Tabled to a future meeting

 - D. RCO Thompson Creek Vendor Agreement
 - a. Proposed action: accept without amendment and approve.
 - b. Action was taken:
 - Passed Moved for discussion during meeting Tabled to a future meeting

ADOPTED BY THE BOARD OF THE THURSTON CONSERVATION DISTRICT, WASHINGTON
ON March 25, 2026, AND EFFECTIVE IMMEDIATELY

SIGNED:

TJ Johnson, Board Chair

Marianne Tompkins, Board Vice-Chair

David Iyall, Board Auditor

Doug Rushton, Board Member

Jennifer Colvin, Board Member

Attest: Sarah Moorehead, Executive Director

Thurston Conservation District Board of Supervisors

Work Session Minutes

February 25, 2026

Hybrid: In-Person and Virtual on Zoom

Originally Scheduled: 5:00 p.m. – 6:00 p.m.

Actual Meeting Time: 5:00 p.m. – 6:02 p.m.



Present at Work Session:

TJ Johnson, TCD Board Chair

Marianne Tompkins, TCD Board Vice Chair

Doug Rushton, TCD Board Supervisor

David Iyall, TCD Board Supervisor

Jennifer Colvin, TCD Board Supervisor

Sarah Moorehead, TCD Executive Director

Sophia Barashkoff, TCD Staff

Ben Cushman, TCD Legal Counsel

Dan Calvert, Joint Base Lewis McChord
Sentinel Landscape

Betsie DeWreede, member of the public

Kevin Jensen, member of the public

Krystal Jensen, member of the public

Andrew Moiseff, Community Farmland
Trust (CFLT)

- 1 **1.** Topic List Review, *All*
- 2 **2.** Awards Presentation
- 3 a. WACD Wildlife Farmer of the Year: Riverbend Ranch
- 4 **3.** Partner Presentation: Update on the Sentinel Landscape Partnership, *Dan Calvert*
- 5 **4.** Awards Presentation
- 6 a. TCD 2025 Land Steward of the Year: Betsie DeWreede
- 7 **5.** NACD Report Out, *Executive Director Sarah Moorehead*
- 8 **6.** TCD Resolution #2026-02: 2026 Community Economic Development Revitalization Board
- 9 **7.** TCD Policy 4.6.2 On-Call Services Rosters, *Executive Director Sarah Moorehead*
- 10 **8.** Strategic Planning Outreach, *Executive Director Sarah Moorehead*
- 11 **9.** Legislative Day Debrief, *All*
- 12 **10.** Important Updates & Announcements
- 13 a. Board of Supervisors, *All*
- 14 b. Executive Director, *Executive Director Moorehead*

Respectfully,

TJ Johnson, TCD Board Chair

**Thurston Conservation District Board of Supervisors
Regular Board Meeting Minutes**

February 25, 2026

Hybrid: In-Person and Virtual on Zoom

Originally Scheduled: 6:30 p.m. – 8:00 p.m.

Actual Meeting Time: 6:30 pm – 7:16 p.m.



Present at Board Meeting:

TJ Johnson, TCD Board Chair

Marianne Tompkins, TCD Board Vice Chair

Doug Rush Rushton, TCD Board Supervisor

David Iyall, TCD Board Supervisor

Jennifer Colvin, TCD Board Supervisor

Sarah Moorehead, TCD Executive Director

Sophia Barashkoff, TCD Staff

Ben Cushman, TCD Legal Counsel

Josh Giuntoli, Washington State

Conservation Commission (WSCC)

Summary of Action Items

- 1 • **None.**

Summary of Motions Passed

2
3 *Supervisor Iyall moved to approve the Agenda. Supervisor Rushton seconded. Motion passed*
4 *unanimously, (5-0).*

5 *Supervisor Tompkins moved to approve the Consent Agenda. Supervisor Colvin seconded.*
6 *Motion passed unanimously, (5-0).*

7 *Supervisor Tompkins moved to approve the TCD Resolution #2026-02: Community Economic*
8 *Development Revitalization Board Grant Application Resolution. Supervisor Iyall second.*
9 *Motion passed unanimously, (5-0).*

10 *Supervisor Tompkins moved to adjourn the February 25, 2026 TCD Board Meeting. Supervisor*
11 *Colvin seconded. Motion passed unanimously, (5-0).*

Full Version of the Minutes

12 **Welcome & Introductions**

13 At 6:30 p.m., TCD Board Chair TJ Johnson called the February 25, 2026 Regular Board Meeting
14 to order. TCD Board, Staff, members of the public, and legal counsel were introduced by Board
15 Chair Johnson. He announced that the meeting was being video recorded. TCD Supervisors,
16 Johnson, Tompkins, Iyall and Colvin and Executive Director Moorehead attended the meeting in
17 person at the TCD office. TCD Supervisor Rushton attended the meeting virtually.

18 **Agenda Review**

19 *Supervisor Iyall moved to approve the Agenda. Supervisor Rushton seconded. Motion passed*
20 *unanimously, (5-0).*

21 **Consent Agenda**

- 22 A. January 28, 2026, Board Work Session & Meeting Minutes
23 B. February 2026 Financial Report
24 C. FY25-27 NFWF Improving Salmon Habitat Funding Agreement
25 D. FY25-29 Ecostudies Diversity & Resilience of Rural Communities Funding Agreement
26 E. RCO Scatter Creek Riparian Restoration Applicant Authorization
27 F. TCD Policy 4.6.2 On-Call Services Rosters

28 *Supervisor Tompkins moved to approve the Consent Agenda. Supervisor Colvin seconded.*
29 *Motion passed unanimously, (5-0).*

30 **Award Presentation Recap**

- 31 A. Wildlife Farmer of the Year Award: Riverbend Ranch.
32 B. Land Steward of the Year Award: Betsie DeWreede

33 **Public Comment**

34 No public members made comments.

35 **Partner Reports**

- 36 A. National Resources Conservation Service (NRCS) Update, TBD
37 • Executive Director Moorehead gave an update.
38 • The local working group held a kick-off meeting and will schedule a meeting with
39 local producers in the spring.
40 • Supervisor Johnson asked to have an in person or written update monthly.
41 B. Washington State Conservation Commission (WSCC) Update, Josh Giuntoli
42 • Mr. Giuntoli gave an update.
43 C. Washington Association of Conservation Districts (WACD) Update, Sarah Moorehead,
44 • Executive Director Moorehead gave an update.
45 • WACD Leadership is working to create/update a legislative/policy playbook to
46 interact better with all CD's throughout the state.
47 • Supervisor engagement survey is coming out soon.
48 D. National Association of Conservation Districts (NACD) Update,
49 • Executive Director Moorehead gave an update.

50 **TCD Resolution #2026-02: 2026 Community Economic Development Revitalization Board**
51 **Grant Application Resolution**

52 ***Supervisor Tompkins moved to approve the proposed TCD Resolution #2026-02 2026***
53 ***Community Economic Development Revitalization Board Grant Application Resolution.***
54 ***Supervisor Iyall seconded. Motion passed unanimously, (5-0).***

55 **Governance**

56 A. March 25, 2026 Work Session Topic List & Meeting Agenda Development.

57 **Work Session**

- 58 • Topic List Review, *All*
- 59 • Staff Presentation: Overview of TCD's Growing Habitat Program, *Paul Cereghino*
- 60 • Community Partner Presentation, *TBD*
- 61 • Annual Plan, *Executive Director Moorehead*
- 62 • Legislative Update, *Executive Director Moorehead*
- 63 • Strategic Planning Outreach, *Executive Director Moorehead*
- 64 • Conservation and Education Center (CEC) Development, *All*
- 65 • Important Updates & Announcements
 - 66 ○ Board of Supervisors, *All*
 - 67 ○ Executive Director, *Sarah Moorehead*

68 **Board Meeting Agenda**

- 69 • Welcome, Introductions, Audio Recording Announcement
- 70 • Agenda Review
- 71 • Consent Agenda
 - 72 ○ February 25, 2026 Board Work Session & Meeting Minutes
 - 73 ○ March 2026 Financial Report
- 74 • Public Comment
- 75 • Partner Reports (if present)
 - 76 ○ National Resources Conservation Service
 - 77 ○ Washington State Conservation Commission
 - 78 ○ Washington Association of Conservation Districts
- 79 • Governance, *All*
 - 80 ○ Rates & Charges
 - 81 ○ April 25, 2026 Work Session Topic List & Meeting Agenda Development
- 82 • **Executive Session:** to consider the selection of a site or the acquisition of real
83 estate by lease or purchase when public knowledge regarding such consideration
84 would cause a likelihood of increased price.
- 85 • **Executive Session:** to discuss with legal counsel representing the agency
86 litigation or potential litigation.

87 **Executive Session: To discuss potential litigation**

88 *RCW 42.30.110(1)(i) To discuss with legal counsel representing the agency litigation or potential*
89 *litigation.*

90 The Executive Session opened at 6:50 pm to last for no more than 25 minutes and concluded at
91 7:15 pm. In attendance: TCD Board members Johnson, Tompkins, Rushton, Iyall and Colvin, and
92 Executive Director Moorehead and legal counsel Ben Cushman.

93 **Executive Session Report Out**

94 No action was taken.

95 ***Supervisor Tompkins moved to adjourn the February 25, 2026 TCD Board Meeting. Supervisor***
96 ***Colvin seconded. Motion passed unanimously, (5-0).***

97 **Adjourn 7:16 pm**

Respectfully,

TJ Johnson, TCD Board Chair

Thurston Conservation District

March 2026 Financial Notes



February and Year-to-Date (YTD) Profit & Loss (P&L)

1. The District experienced a net income loss in February 2026 of \$74,191 and a YTD net income loss of \$169,063.
2. In February the SS Green program received a donation of \$9,100 for the annual Student Green College.

Previous Year YTD P&L Comparison

3. *Plant Sale* pre-sales more than doubled (105%) in the first two months of 2026 compared to 2025.
4. *Interest and Other Earnings* increased by 115% compared to this time last year primarily because of the earnings received from the Local Government Investment Pool (LGIP) account.
5. The *Software Licenses* expense increased by 191% compared to this time last year because the District paid the annual subscription for its GIS software (\$1,536) in February.

Unrestricted Budget vs Actual

6. It looks like the District is spending down its *Utilities* budget (line 62) very quickly. We will likely have to adjust this budget as part of the Mid-Year Revised Budget process.

Thurston Conservation District
Profit & Loss
February 2026

	Feb 26
Ordinary Income/Expense	
Income	
3400000 · Charges for Goods and Services	
3451100 · Soil/Water Conservation Service	
3451110 · Soil Testing	898.23
3451130 · Poultry Equipment & Tool Rentals	7.40
3451140 · Plant Sales	1,245.59
3451150 · Partner Fee for Service	7,422.36
	9,573.58
Total 3451100 · Soil/Water Conservation Service	9,573.58
Total 3400000 · Charges for Goods and Services	9,573.58
3300000 · Grant Revenues	229,893.97
3600000 · Miscellaneous Revenues	
3685000 · Special Assessments - Service	19,509.24
3670000 · Nongovernmental Contributions	9,100.00
3610000 · Interest and Other Earnings	182.31
	28,791.55
Total 3600000 · Miscellaneous Revenues	28,791.55
Total Income	268,259.10
Gross Profit	268,259.10
Expense	
Vehicle Allocation	0.00
Overhead Allocation	0.00
5531000 · Salaries & Benefits	224,242.76
5314102 · Audit & Accounting	866.42
5314103 · Computer Services	3,513.60
5314100 · Professional Services	1,840.00
5314203 · Printing Services	780.65
5314104 · Janitorial Services	700.00
5314501 · Office Rent	8,680.00
5314700 · Utilities	838.60
5314503 · Equipment Leases	328.29
5314504 · Vehicle Leases	583.49
5314200 · Communications	1,539.18
5354800 · Repairs & Maintenance	79.10
5314505 · Software Licenses	2,368.37
5313101 · Office Supplies	244.85
5314202 · Postage & Shipping	381.68
5314117 · Soil Testing	116.12
Project Expenses	2,672.61
5314302 · Staff - Conference & Training	647.74
5314306 · Board - Conference & Training	71.48
5314300 · Staff - Travel	598.57
5314108 · Construction & Restoration Work	57,019.62
5314600 · Liability Insurance Premiums	3,110.42
5600000 · Sub-Awards / Pass-Through	31,029.30

3:18 PM

03/18/26

Accrual Basis

Thurston Conservation District
Profit & Loss
February 2026

	<u>Feb 26</u>
5945360 · Capital Outlays	
5945363 · Equipment & Office Furniture	76.78
5945364 · Computer Hardware	120.78
	<hr/>
Total 5945360 · Capital Outlays	197.56
	<hr/>
Total Expense	342,450.41
	<hr/>
Net Ordinary Income	-74,191.31
	<hr/>
Net Income	-74,191.31
	<hr/> <hr/>

Thurston Conservation District
Profit & Loss
 January through February 2026

03/18/26

Accrual Basis

	Jan - Feb 26
Ordinary Income/Expense	
Income	
3400000 · Charges for Goods and Services	
3451100 · Soil/Water Conservation Service	
3451110 · Soil Testing	1,201.60
3451130 · Poultry Equipment & Tool Rentals	29.23
3451140 · Plant Sales	18,004.37
3451150 · Partner Fee for Service	7,422.36
Total 3451100 · Soil/Water Conservation Service	26,657.56
Total 3400000 · Charges for Goods and Services	26,657.56
3300000 · Grant Revenues	441,434.27
3600000 · Miscellaneous Revenues	
3685000 · Special Assessments - Service	21,575.15
3670000 · Nongovernmental Contributions	9,600.00
3610000 · Interest and Other Earnings	567.11
Total 3600000 · Miscellaneous Revenues	31,742.26
Total Income	499,834.09
Gross Profit	499,834.09
Expense	
Vehicle Allocation	0.00
Overhead Allocation	0.00
5531000 · Salaries & Benefits	471,263.45
5314101 · Legal Fees & Services	2,000.00
5314102 · Audit & Accounting	-1,927.59
5314103 · Computer Services	7,027.20
5314100 · Professional Services	6,978.10
5314400 · Advertising	40.81
5314203 · Printing Services	780.65
5314104 · Janitorial Services	1,575.00
5314501 · Office Rent	17,360.00
5314700 · Utilities	1,578.78
5314503 · Equipment Leases	535.15
5314504 · Vehicle Leases	906.51
5314200 · Communications	3,061.36
5354800 · Repairs & Maintenance	588.50
5314505 · Software Licenses	2,890.37
5313101 · Office Supplies	336.20
5314202 · Postage & Shipping	415.01
5314902 · Organizational Dues	1,141.00
5314307 · Licenses and Permits	123.00
5314117 · Soil Testing	364.74
Project Expenses	5,061.97
5314302 · Staff - Conference & Training	785.70
5314306 · Board - Conference & Training	-258.24
5314300 · Staff - Travel	1,675.86
5314108 · Construction & Restoration Work	69,109.62
5314600 · Liability Insurance Premiums	6,220.84
560000 · Sub-Awards / Pass-Through	67,949.52

3:22 PM

03/18/26

Accrual Basis

Thurston Conservation District
Profit & Loss
January through February 2026

	<u>Jan - Feb 26</u>
5945360 · Capital Outlays	
5945363 · Equipment & Office Furniture	204.02
5945364 · Computer Hardware	1,109.66
Total 5945360 · Capital Outlays	<u>1,313.68</u>
Total Expense	<u>668,897.19</u>
Net Ordinary Income	<u>-169,063.10</u>
Net Income	<u><u>-169,063.10</u></u>

Thurston Conservation District Profit & Loss Prev Year Comparison

January through February 2026

	Jan - Feb 26	Jan - Feb 25	\$ Change	% Change
Ordinary Income/Expense				
Income				
3400000 · Charges for Goods and Services				
3451100 · Soil/Water Conservation Service				
3451110 · Soil Testing	1,201.60	618.60	583.00	94.3%
3451130 · Poultry Equipment & Tool Rentals	29.23	29.40	-0.17	-0.6%
3451140 · Plant Sales	18,004.37	8,801.54	9,202.83	104.6%
3451150 · Partner Fee for Service	7,422.36	0.00	7,422.36	100.0%
Total 3451100 · Soil/Water Conservation Service	26,657.56	9,449.54	17,208.02	182.1%
Total 3400000 · Charges for Goods and Services	26,657.56	9,449.54	17,208.02	182.1%
3300000 · Grant Revenues	441,434.27	449,269.11	-7,834.84	-1.7%
3600000 · Miscellaneous Revenues				
3699100 · Miscellaneous Other	0.00	917.49	-917.49	-100.0%
3685000 · Special Assessments - Service	21,575.15	22,930.59	-1,355.44	-5.9%
3670000 · Nongovernmental Contributions	9,600.00	50.00	9,550.00	19,100.0%
3610000 · Interest and Other Earnings	567.11	263.47	303.64	115.3%
Total 3600000 · Miscellaneous Revenues	31,742.26	24,161.55	7,580.71	31.4%
Total Income	499,834.09	482,880.20	16,953.89	3.5%
Gross Profit	499,834.09	482,880.20	16,953.89	3.5%
Expense				
Vehicle Allocation	0.00	0.00	0.00	0.0%
Overhead Allocation	0.00	0.00	0.00	0.0%
5531000 · Salaries & Benefits	471,263.45	435,157.37	36,106.08	8.3%
5314101 · Legal Fees & Services	2,000.00	4,000.00	-2,000.00	-50.0%
5314102 · Audit & Accounting	-1,927.59	1,000.72	-2,928.31	-292.6%
5314103 · Computer Services	7,027.20	2,765.50	4,261.70	154.1%
5314100 · Professional Services	6,978.10	28,056.35	-21,078.25	-75.1%
5314400 · Advertising	40.81	179.71	-138.90	-77.3%
5314203 · Printing Services	780.65	366.11	414.54	113.2%
5314104 · Janitorial Services	1,575.00	1,400.00	175.00	12.5%
5314501 · Office Rent	17,360.00	16,854.00	506.00	3.0%
5314700 · Utilities	1,578.78	877.68	701.10	79.9%
5314503 · Equipment Leases	535.15	1,003.32	-468.17	-46.7%
5314504 · Vehicle Leases	906.51	934.16	-27.65	-3.0%
5314200 · Communications	3,061.36	2,866.17	195.19	6.8%
5313102 · Photocopier Usage	0.00	148.92	-148.92	-100.0%
5354800 · Repairs & Maintenance	588.50	351.12	237.38	67.6%
5314505 · Software Licenses	2,890.37	993.68	1,896.69	190.9%
5313101 · Office Supplies	336.20	810.48	-474.28	-58.5%
5314202 · Postage & Shipping	415.01	512.44	-97.43	-19.0%
5314902 · Organizational Dues	1,141.00	1,141.00	0.00	0.0%
5314307 · Licenses and Permits	123.00	148.00	-25.00	-16.9%
5314117 · Soil Testing	364.74	536.78	-172.04	-32.1%
5313401 · Plants for Resale	0.00	1,741.43	-1,741.43	-100.0%
Project Expenses	5,061.97	7,949.03	-2,887.06	-36.3%
5314302 · Staff - Conference & Training	785.70	1,420.00	-634.30	-44.7%
5314306 · Board - Conference & Training	-258.24	225.07	-483.31	-214.7%
5314300 · Staff - Travel	1,675.86	3,925.17	-2,249.31	-57.3%
5314119 · Cultural Resources	0.00	17,833.05	-17,833.05	-100.0%
5314108 · Construction & Restoration Work	69,109.62	60,143.61	8,966.01	14.9%
5314109 · Cost Share	0.00	38,586.02	-38,586.02	-100.0%
5314110 · Bank Fees & Interest Charges	0.00	0.00	0.00	0.0%
5314600 · Liability Insurance Premiums	6,220.84	6,993.16	-772.32	-11.0%
560000 · Sub-Awards / Pass-Through	67,949.52	41,307.49	26,642.03	64.5%
66300 · Sales Tax Adjustments	0.00	19.59	-19.59	-100.0%
66900 · Reconciliation Discrepancies	0.00	0.00	0.00	0.0%

3:33 PM

03/18/26

Accrual Basis

Thurston Conservation District Profit & Loss Prev Year Comparison

January through February 2026

	Jan - Feb 26	Jan - Feb 25	\$ Change	% Change
5945360 · Capital Outlays				
5945367 · Restoration Equipment	0.00	2,379.76	-2,379.76	-100.0%
5945363 · Equipment & Office Furniture	204.02	262.42	-58.40	-22.3%
5945364 · Computer Hardware	1,109.66	1,397.72	-288.06	-20.6%
Total 5945360 · Capital Outlays	1,313.68	4,039.90	-2,726.22	-67.5%
Total Expense	668,897.19	684,287.03	-15,389.84	-2.3%
Net Ordinary Income	-169,063.10	-201,406.83	32,343.73	16.1%
Net Income	<u>-169,063.10</u>	<u>-201,406.83</u>	<u>32,343.73</u>	<u>16.1%</u>

Thurston Conservation District
Balance Sheet
As of February 28, 2026

	Feb 28, 26
ASSETS	
Current Assets	
Checking/Savings	
3088010 · Checking-103 Beneficial	223,238.40
3081001 · Checking-7444 Timberland	3,032.18
3088020 · Savings Accounts	
3088021 · Saving-116 Beneficial Reserve	4,186.59
3088022 · Saving-129 Beneficial CEC	119,412.30
Total 3088020 · Savings Accounts	123,598.89
3092001 · LGIP Investment Account	50,272.94
3088030 · Counter Cash	133.38
3088040 · PayPal Account	8,995.94
Total Checking/Savings	409,271.73
Accounts Receivable	496,948.47
Other Current Assets	
3090500 Prepaid Accounts	
3090509 · Other Prepaid Expenses	930.00
3090501 · Prepaid Insurance	19,040.48
3090507 · Security Deposit - Tilley Court	8,427.00
Total 3090500 Prepaid Accounts	28,397.48
3091000 · 309.10.00 Inventory Asset	2,666.56
3092000 · 309.20.00 Cash on Hand	29,685.55
Total Other Current Assets	60,749.59
Total Current Assets	966,969.79
Fixed Assets	66,750.00
TOTAL ASSETS	1,033,719.79
LIABILITIES & EQUITY	
Liabilities	
Current Liabilities	
Accounts Payable	54,796.48
Credit Cards	9,720.82
Other Current Liabilities	
3861100 · Sales Tax Payable	1,889.48
3861000 · Payroll Liabilities	241,804.89
Total Other Current Liabilities	243,694.37
Total Current Liabilities	308,211.67
Total Liabilities	308,211.67
Equity	725,508.12
TOTAL LIABILITIES & EQUITY	1,033,719.79

2026 Unrestricted Budget vs Actual



February 16.67%

Account Name	2026 Budget	2026 Actual	\$ Over Budget	% of Budget Spent
- Income	1,314,063	110,227	-1,203,836	8.39%
- Retail Sales	82,350	19,638	-62,712	23.85%
- Food Production and Consumption	2,900	22	-2,878	0.75%
Poultry Equipment & Tool Rentals	2,900	22	-2,878	0.75%
- Soil Conservation and Health	7,550	1,209	-6,341	16.01%
Soil Testing	6,500	1,202	-5,298	18.49%
Nutrient Spreader Rentals	700	7	-693	1.06%
No-Till Drill Rentals	350	0	-350	0.00%
- Community Outreach and Education	68,900	18,004	-50,896	26.13%
Plant Sales	68,900	18,004	-50,896	26.13%
- Other Income	3,000	403	-2,597	13.42%
Contributions Private	0	0	0	N/A
Interest Income	3,000	403	-2,597	13.42%
Miscellaneous Income	0	0	0	N/A
+ Grant Revenue	126,713	0	-126,713	0.00%
Rates and Charges	565,000	21,575	-543,425	3.82%
- Overhead	540,000	69,014	-470,986	12.78%
Overhead Allocation	518,000	67,387	-450,613	13.01%
Vehicle Allocation	22,000	1,627	-20,373	7.40%
2025 Carry Overs	30,000	30,000	0	100.00%
- Program Allocation	585,000	83,688	-501,312	14.31%
- Priority 1: Protect & Restore Natural Resources	50,000	9,685	-40,315	19.37%
Working Lands Preservation Initiative	10,000	0	-10,000	0.00%
Conservation TA	40,000	9,685	-30,315	24.21%
- Priority 2: Build Climate Resilience and Disaster Preparedness	62,200	8,007	-54,193	12.87%
Food Processing and Tools Rentals	25,000	2,096	-22,904	8.39%
Soil Health Testing	27,000	2,898	-24,102	10.73%
Nutrient Spreader Rentals	5,200	34	-5,166	0.66%
No-Till Drill Rentals	5,000	2,979	-2,021	59.57%
- Priority 3: Create Community, Access, and Equity	283,500	43,920	-239,580	15.49%
Farm Link and Land Access	1,000	0	-1,000	0.00%
Conservation & Education Center	60,000	4,066	-55,934	6.78%
District Communications	60,000	8,752	-51,248	14.59%
Plant Sale	75,000	7,819	-67,181	10.42%
Elections	20,000	8,711	-11,289	43.55%
SS Green	45,000	13,866	-31,134	30.81%
Envirothon	4,000	128	-3,872	3.21%
Teens in Thurston Volunteer Program	2,500	579	-1,921	23.14%
Website ADA Compliance	10,000	0	-10,000	0.00%
TCD Signage	6,000	0	-6,000	0.00%
- Priority 4: Invest in Organizational Excellence and Leadership	189,300	22,076	-167,224	11.66%
Investing in Future Conservation	33,000	2,785	-30,215	8.44%

	Account Name	2026 Budget	2026 Actual	\$ Over Budget	% of Budget Spent
44	Employee Recruitment	3,300	3,174	-126	96.18%
45	Partnership Building	40,000	9,888	-30,112	24.72%
46	Advocacy Activities	40,000	6,269	-33,731	15.67%
47	Rates & Charges Initiative (Including Rate Study)	47,000	22	-46,978	0.05%
48	Staff Conference & Training	18,000	196	-17,804	1.09%
49	Board-led Initiatives and Meeting Supplies	2,000	141	-1,859	7.04%
50	Board Conference, Training, and Travel	6,000	-399	-6,399	-6.65%
51	- Administrative Expenses	651,105	112,805	-538,299	17.33%
52	Administrative Salaries & Benefits	338,000	62,674	-275,326	18.54%
53	36-Hour Leave Accrual Adjustment	8,050	8,050	0	100.00%
54	- Professional Services	81,884	7,100	-74,784	8.67%
55	Legal Services	24,000	2,000	-22,000	8.33%
56	Audit & Accounting	11,484	-1,928	-13,411	-16.79%
57	Computer Services	42,000	7,027	-34,973	16.73%
58	Professional Services	4,400	0	-4,400	0.00%
59	- Facility and Maintenance	120,260	20,718	-99,542	17.23%
60	Janitorial Services	9,100	1,575	-7,525	17.31%
61	Office Rent	104,160	17,360	-86,800	16.67%
62	Utilities	5,000	1,579	-3,421	31.58%
63	Equipment & Office Furniture	2,000	204	-1,796	10.20%
64	- Technology	31,285	4,908	-26,377	15.69%
65	Office Equipment Leases	2,968	328	-2,640	11.06%
66	Communications	18,084	2,800	-15,284	15.48%
67	Photocopier Usage	700	0	-700	0.00%
68	Computer Hardware Purchases	3,000	1,110	-1,890	36.99%
69	Computer Software	6,533	671	-5,862	10.27%
70	- Vehicles	22,283	1,827	-20,456	8.20%
71	Vehicle Leases	7,783	907	-6,876	11.65%
72	Vehicle Repairs & Maintenance	6,500	19	-6,481	0.29%
73	Vehicle Fuel	8,000	902	-7,098	11.28%
74	- Supplies	10,968	1,307	-9,661	11.92%
75	Office Supplies	4,000	166	-3,834	4.15%
76	Postage & Shipping	200	0	-200	0.00%
77	Organizational Dues	6,668	1,141	-5,527	17.11%
78	Licenses & Permits	100	0	-100	0.00%
79	- Insurance and Banking	38,375	6,221	-32,154	16.21%
80	Bank Fees & Interest Charges	750	0	-750	0.00%
81	Liability Insurance Premiums	37,625	6,221	-31,404	16.53%
82	Late Fees & Penalties	0	0	0	N/A
83	- Savings	107,958	0	-107,958	0.00%
84	- Reserve Fund	57,958	0	-57,958	0.00%
85	Tenant Improvement Depreciation	22,250	0	-22,250	0.00%
86	Other Reserve Fund Savings	35,708	0	-35,708	0.00%
87	Conservation Education Center Savings Plan	50,000	0	-50,000	0.00%
88	Net Income (Surplus or Deficit)	0	-56,266	-56,267	-

2026 Restricted Budgets vs Actuals



As of February 28, 2026

Grant Name	Account Number	Grant Number	Grant Start Date	Grant End Date	Total Grant Amount	Official Remaining	2026 Budget	2026 Actual	2026 Remaining Budget	% of Total Time	% of Total Budget Spent
Federal											
USFWS Restoring South Sound Prairies	US90	F22AC01820-00	07/01/22	07/01/27	190,000	88,111	59,039	448	58,591	73.29%	53.63%
DOE											
Black River Frog	E023	OCBASRP-2325-ThurCD-00023	07/01/25	06/30/29	239,036	228,146	67,967	4,571	63,395	16.63%	4.56%
Riverbend Construction	E024	OCBASRP-2325-ThurCD-00024	11/01/25	06/30/27	1,771,771	1,716,447	566,397	40,339	526,058	19.77%	3.12%
Chehalis Tributary Data Collection	E042	OCBASRP-2325-ThurCD-00042	08/01/25	07/31/27	150,000	141,253	22,730	2,802	19,928	29.04%	5.83%
Neighborhood Stormwater	E045		09/01/25	12/31/27	198,986	196,342	55,108	2,644	52,464	21.24%	1.33%
Umbrella Site Management	E047	OCBASRP-2325-ThurCD-00047	07/01/25	06/30/29	121,910	71,936	5,024	1,098	3,926	16.63%	40.99%
Goebel Road River Restoration	E053	OCBASRP-2327-ThurCD-00053	10/01/25	09/30/27	268,497	256,673	75,308	7,544	67,764	20.68%	4.40%
Ecology Elwanger	E165	WQC-2025-ThurCD-00165	11/01/24	10/31/27	500,000	425,708	277,023	8,460	268,563	44.29%	14.86%
RCO											
FY25-29 Shore Friendly Administration	R035	24-1207	07/01/25	06/30/29	2,051,187	1,875,958	617,108	59,068	558,040	16.63%	8.54%
ESRP Zangle Cove	R070	20-1517R	07/01/21	04/30/26	110,073	6,734	6,734	0	6,734	96.54%	93.88%
FY23-25 ESRP Lower Eld Bulkhead Removal	R090	22-1201R	07/01/23	07/01/26	125,200	4,723	4,954	231	4,723	88.79%	96.23%
South Sound Outreach (HSIL)	R100	23-1853O	05/07/24	04/30/27	109,846	85,561	30,291	6,359	23,932	60.88%	22.11%
South Sound Riparian Analysis and Implementation	R110	24-1212R	09/25/24	09/25/28	132,614	112,378	20,757	836	19,921	35.70%	15.26%
Thompson Creek Salmon Recovery	R120	25-1078P	09/16/25	09/15/27	253,000	250,393	126,111	2,607	123,504	22.74%	1.03%
WSCC											
FY25-27 Chehalis	W050	26-13-CH	07/01/25	06/30/27	206,300	135,541	90,217	9,392	80,825	33.29%	34.30%
FY25-27 Shellfish Cost Share	W060	26-13-SH	07/25/25	06/30/27	205,000	196,881	29,231	1,436	27,794	31.02%	3.96%
FY25-26 CREP	W070	26-13-CE	07/01/25	06/30/26	25,000	20,098	12,372	1,178	11,194	66.58%	19.61%
FY25-27 Natural Resource Investments (NRI)	W080	26-13-NR	11/05/25	06/30/26	107,770	105,208	34,704	2,562	32,142	48.74%	2.38%
FY25-26 Implementation - Soil Testing Support	W086.2	26-13-IM	02/05/26	06/30/26	500	40	500	460	40	16.44%	92.07%
FY25-26 Sustainable Farms and Fields	W120	26-13-SFF	07/17/25	06/30/26	40,000	23,517	20,203	4,236	15,967	65.04%	41.21%
FY25-27 Forest Health & Community Wildfire Resiliency	W130	26-13-FH	07/09/25	06/30/27	68,175	50,464	37,574	5,588	31,985	32.55%	25.98%
FY25-27 Irrigation Efficiencies	W140	26-13-IE	07/17/25	06/30/27	50,000	41,627	35,873	4,324	31,550	31.79%	16.75%
FY25-27 Riparian Grant Program (RGP)	W170	26-13-RGP	09/10/25	06/30/27	3,240,935	2,736,203	975,962	141,258	834,704	26.10%	15.57%
Other State Grants											
WDFW Building Conservation Capacity	S100	24-25744	03/17/25	06/30/27	500,000	346,233	223,134	42,258	180,876	41.75%	30.75%
WDNR Wildfire Ready Neighbors	S200	93-110294	02/10/26	06/30/26	12,350	12,350	12,350	0	12,350	13.48%	0.00%
DOH Eld Inlet Manure Management	S500	GVL29108-0	05/13/24	07/31/27	776,247	588,987	385,130	31,411	353,719	55.91%	24.12%
Thurston County											
FY25-27 VSP	TC400		07/01/25	06/30/27	170,000	91,011	87,351	12,483	74,868	33.29%	46.46%
FY25-27 VSP Cost Share	TC450		08/15/25	06/30/27	223,875	216,918	32,208	6,248	25,959	28.91%	3.11%
FY24-26 Thurston County Working Lands Outreach	TC500		08/13/24	06/30/26	5,500	2,189	4,315	2,547	1,768	82.24%	60.20%

Grant Name	Account Number	Grant Number	Grant Start Date	Grant End Date	Total Grant Amount	Official Remaining	2026 Budget	2026 Actual	2026 Remaining Budget	% of Total Time	% of Total Budget Spent
- Miscellaneous											
FY25-29 Olympia Urban Farmland	M065	NA	01/01/25	12/31/29	259,000	199,283	51,800	9,136	42,664	23.22%	23.06%
GRuB Beginning Farmer Development	M066	NA	01/01/24	09/14/26	6,525	1,746	1,746	0	1,746	79.96%	73.24%
FY24-25 NACD Bucoda Community Farm	M077	NA	09/24/24	11/15/25	60,000	2,105	432	0	432	Closed	96.49%
WCRRRI Prairie Habitat Enhancement	M095	2022-06	01/01/22	06/30/26	111,954	3,907	3,907	0	3,907	92.57%	96.51%
FY25-29 Ecostudies Diversity & Resilience of Rural Communities (WCRRRI Phase II)	M096	ESI_2025-29	11/01/25	06/30/29	131,000	128,771	38,291	2,229	36,062	8.97%	1.70%
FY25-27 NFWF Improving Salmon Habitat	M864	1301.26.086400	08/30/25	04/30/27	54,490	54,490	0	0	0	30.05%	0.00%
FY25-26 NACD Forestry	M200	NA	01/01/25	06/30/26	133,786	65,194	82,188	25,135	57,054	77.66%	51.27%
FY25-27 OlyEco NFWF Habitat Resilience	M078	NA	03/01/24	02/28/27	30,000	19,852	13,328	854	12,474	66.67%	33.83%
One Tree Planted	M085	NA	09/03/21	until spent	33,076	25,006	0	0	0	NA	24.40%
FY24-26 Pierce County Shellfish NTA	M600	SC-111404	01/01/24	01/31/27	191,000	59,918	70,318	10,400	59,918	70.10%	68.63%
- Sentinel Landscape Program (SLP)											
NACD SLP REPI Challenge	SLP075	NA	10/01/21	06/30/28	1,353,000	152,589	70,724	13,035	57,689	65.40%	88.72%
EcoStudies REPI	SLP076	SA-2025-01	08/01/25	12/31/28	188,543	179,744	36,322	1,669	34,653	16.97%	4.67%
WDFW Landowner Support and Due Diligence (AERI)	SLP077	25-27659	06/01/25	11/30/28	385,000	374,213	72,217	6,422	65,795	21.34%	2.80%
- South Sound GREEN											
2025 Interlocal	G019-SS		01/01/25	until spent	64,160	1,802	8,916	7,114	1,802	NA	97.19%
2026 Interlocal	G019-SS		01/01/26	until spent	66,432	66,432	66,432	0	66,432	NA	0.00%
FY25 ESD 113 Climate Education	G019.104		05/15/25	until spent	6,000	3,731	3,731	0	3,731	NA	37.82%
FY25 Tumwater SD Natural Resources	G019.120		09/03/24	until spent	1,000	329	329	0	329	NA	67.07%
FY25-27 NOAA B-WET	G019.106		02/01/25	01/31/27	40,720	22,243	27,747	5,504	22,243	53.84%	45.37%
2024 Dawkins	G019.28		01/01/24	until spent	20,750	13,628	13,656	28	13,628	NA	34.32%
FY25-27 Dawkins	G019.28		12/16/24	until spent	30,000	30,000	0	0	0	NA	0.00%
2023 Community Foundation	G019.29		10/25/23	until spent	2,500	1,700	1,700	0	1,700	NA	32.00%
2024 Community Foundation	G019.29		11/01/24	until spent	2,500	2,500	0	0	0	NA	0.00%
Carlson Charitable	G019.31		12/05/23	until spent	2,500	7	7	0	7	NA	99.73%
2024 Nisqually for Water Quality Testing	G019.60		01/01/24	until spent	5,000	2,321	2,321	0	2,321	NA	53.57%
TCC General	G019 TCC		01/01/18	until spent	11,561	1,681	1,681	0	1,681	NA	85.46%
2024 Squaxin	G019.85		02/01/24	until spent	2,250	2,250	0	0	0	NA	0.00%
2025 Squaxin	G019.85		03/01/25	until spent	1,000	1,000	0	0	0	NA	0.00%
FY25-26 Inspire Olympia	G019.130		08/01/25	until spent	30,000	5,631	6,867	1,236	5,631	NA	81.23%
- Teens in Thurston Volunteer Program											
Nisqually TNT 2024	T070	NA	01/01/24	until spent	5,581	2,509	2,509	0	2,509	NA	55.04%
- Envirothon Program											
2025 Chehalis Tribe Envirothon	T040		03/01/25	until spent	2,500	1,494	1,494	0	1,494	NA	40.25%
2026 Pork Blakely Envirothon	T040		01/26/26	until spent	500	500	500	0	500	NA	0.00%

Thurston Conservation District
Payment Report
February 2026

Type	Num	Date	Name	Funding Source	Expense Account	Paid Amount
Bill Pmt -Check	EFT	2/1/2026	Comcast	A010 - Administrative Expenses	5314204 · Internet Services	261.26
Check	EFT	2/1/2026	Tilley Court Caves, LLC	A010 - Administrative Expenses	5314501 · Office Rent	8,680.00
Check	EFT	2/2/2026	Postal IA	T036 - Elections	5314202 · Postage & Shipping	110.00
Credit Card Charge	15021	2/3/2026	Ace Hardware	W170 - FY25-27 RGP:W170.5 - DIP	5314107 · Project Supplies	35.09
Credit Card Charge	15023	2/4/2026	US Postal Service	T098 - Soil Health Testing	5314202 · Postage & Shipping	12.89
Credit Card Charge	15041	2/4/2026	Deer Busters	W170 - FY25-27 RGP:W170.5 - DIP	5314108 · Construction & Restoration Work	1,275.54
Credit Card Charge	15124	2/4/2026	Ebay	T099 - Food Processing and Tools Rentals	5313101 · Office Supplies	31.81
Check	EFT	2/5/2026	Regence - Health Care		5531210 · Medical Benefits	34,227.42
Check	EFT	2/5/2026	Delta Dental		5531212 · Dental Benefits	2,426.65
Credit Card Charge	15067	2/5/2026	Amazon	W120-FY25-26 Sustainable Farms and Fields	5314107 · Project Supplies	142.59
Credit Card Charge	15068	2/5/2026	Amazon	W120-FY25-26 Sustainable Farms and Fields	5314107 · Project Supplies	65.79
Credit Card Charge	15128	2/5/2026	Tenino Market Fresh	E024 - Riverbend Construction	5314107 · Project Supplies	25.97
Credit Card Charge	15069	2/6/2026	Northwest Meadowsclapes, LLC	W120-FY25-26 Sustainable Farms and Fields	5314107 · Project Supplies	519.67
Liability Check	EFT	2/6/2026	Internal Revenue Service		3861004 · Federal Income Tax Payable	18,547.34
Credit Card Charge	1465670771	2/7/2026	QuickBooks Time Support (TSheets)	A010 - Administrative Expenses	5314102 · Audit & Accounting	250.12
Credit Card Charge	15031	2/8/2026	Home Goods	T044 - Board Initiatives & MeetingSupplies	5314310 · Board Meeting Snacks	5.99
Bill Pmt -Check	EFT	2/9/2026	Puget Sound Energy	A010 - Administrative Expenses	5314701 · Electricity	681.95
Bill Pmt -Check	EFT	2/9/2026	Puget Sound Energy	A010 - Administrative Expenses	5314701 · Electricity	616.02
Credit Card Charge	15066	2/9/2026	Fred Meyer	T030 - District Communications	5313101 · Office Supplies	25.26
Credit Card Charge	15130	2/9/2026	Black Lake Landscape Supply	E024 - Riverbend Construction	5314107 · Project Supplies	74.60
Credit Card Charge	4275107	2/9/2026	Rightworks	A010 - Administrative Expenses	5314102 · Audit & Accounting	29.62
Liability Check		2/9/2026	QuickBooks Payroll Service		Payroll	52,546.47
Liability Check	EFT	2/9/2026	WA St Dept of Retirement Systems		3861005 · PERS Deferral Payable	21,300.18
Bill Pmt -Check	EFT	2/10/2026	VSP - Vision Care		5531213 · Vision Insurance	237.95
Bill Pmt -Check	EFT	2/10/2026	USABLE.Life		5531214 · Life Insurance	225.94
Bill Pmt -Check	EFT	2/10/2026	Verizon	A010 - Administrative Expenses	5314201 · Telephone	1,094.81
Bill Pmt -Check	23268	2/10/2026	Aimee Ornelas	W170 - FY25-27 RGP:W170.5 - DIP	Restoration Crew Intern Stipend	1,600.00
Bill Pmt -Check	23269	2/10/2026	Anchor QEA	E024 - Riverbend Construction:	5314100 · Professional Services	1,556.50
Bill Pmt -Check	23270	2/10/2026	Clark's Native Trees	E024 - Riverbend Construction:	5314108 · Construction & Restoration Work	3,319.40
Bill Pmt -Check	23271	2/10/2026	Ghader Alrashid	W170 - FY25-27 RGP:W170.5 - DIP	Restoration Crew Intern Stipend	1,600.00
Bill Pmt -Check	23272	2/10/2026	Marlena Blua	W170 - FY25-27 RGP:W170.5 - DIP	Restoration Crew Intern Stipend	1,600.00
Bill Pmt -Check	23273	2/10/2026	Midwest Labs	T098 - Soil Health Testing	5314117 · Soil Testing	116.12
Bill Pmt -Check	23274	2/10/2026	Minuteman Press	T036 - Elections	5314203 · Printing Services	310.80
Bill Pmt -Check	23275	2/10/2026	Rachel Stendahl	G019.106 NOAA B-WET	560000 · Sub-Awards / Pass-Through	3,103.46
Bill Pmt -Check	23276	2/10/2026	Richard Gloor	W170 - FY25-27 RGP:W170.5 - DIP	Restoration Crew Intern Stipend	1,037.50
Bill Pmt -Check	23277	2/10/2026	Tracking Y Ranch	US90 Restoring South Sound Prairies	5314107 · Project Supplies	448.00
Bill Pmt -Check	23278	2/10/2026	WA St Conservation Commission	A010 - Administrative Expenses	5314504 · Vehicle Leases	583.49
Bill Pmt -Check	23279	2/10/2026	WA St Dept Of Enterprise Services	T021 - Conservation Education Center	5314100 · Professional Services	283.50
Bill Pmt -Check	23280	2/10/2026	All Shield Pest Control	A010 - Administrative Expenses	5314705 · Pest Control	164.55
Bill Pmt -Check	23281	2/10/2026	Deschutes Law Group	A010 - Administrative Expenses	5314101 · Legal Fees & Services	2,000.00
Bill Pmt -Check	23282	2/10/2026	Hannah's Cleaning Service	A010 - Administrative Expenses	5314104 · Janitorial Services	875.00
Credit Card Charge	15064	2/10/2026	WA St Capitol Campus Parking	T030 - District Communications	5314307 - Parking fees	8.00

Type	Num	Date	Name	Funding Source	Expense Account	Paid Amount
Credit Card Charge	15065	2/10/2026	WA St Capitol Campus Parking	T030 - District Communications	5314307 - Parking fees	4.00
Credit Card Charge	P1112240491	2/10/2026	Intuit	A010 - Administrative Expenses	5314102 - Audit & Accounting	645.92
Liability Check	23267	2/10/2026	WSCCE - Council 2		3861008 - Union Dues	1,304.08
Credit Card Charge	15096	2/11/2026	Tractor Supply	W170 - FY25-27 RGP:W170.5 - DIP	5314107 - Project Supplies	246.89
Credit Card Charge	15119	2/11/2026	Fred Meyer	T070 - Teens in Thurston Volunteer Program	5314901 - Meeting & Event	27.23
Credit Card Charge	15073	2/12/2026	US Postal Service	T098 - Soil Health Testing	5314202 - Postage & Shipping	11.91
Credit Card Charge	15074	2/12/2026	US Postal Service	T098 - Soil Health Testing	5314202 - Postage & Shipping	15.23
Credit Card Charge	15075	2/12/2026	US Postal Service	T098 - Soil Health Testing	5314202 - Postage & Shipping	13.78
Credit Card Charge	15120	2/12/2026	DocuSign	A010 - Administrative Expenses	5314505 - Software Licenses	12.99
Credit Card Charge	15127	2/12/2026	Tractor Supply	E024 - Riverbend Construction	5314108 - Construction & Restoration Work	692.26
Credit Card Charge	15131	2/12/2026	Black Lake Landscape Supply	E024 - Riverbend Construction	5314107 - Project Supplies	83.37
Credit Card Charge		2/14/2026	Buzzsprout	T030 - District Communications	5314207 - Web Hosting and Maintenance	12.00
Credit Card Charge	15087	2/15/2026	Alaska Airline	T042 - Advocacy Activities	5314306 - Airfare	35.00
Bill Pmt -Check	EFT	2/18/2026	VSP - Vision Care		5531213 - Vision Insurance	237.95
Credit Card Charge	15129	2/18/2026	Tenino Market Fresh	E024 - Riverbend Construction	5314107 - Project Supplies	25.97
Check	EFT	2/19/2026	TPSC Benefits		5531216 - HRA Admin	125.00
Credit Card Charge	E0300YZNUB	2/19/2026	Microsoft	A010 - Administrative Expenses	5314505 - Software Licenses	506.66
Credit Card Charge	E0300YZNUC	2/19/2026	Microsoft	A010 - Administrative Expenses	5314505 - Software Licenses	16.46
Credit Card Charge	15078	2/19/2026	Amazon	T097 - Plant Sale	5314107 - Project Supplies	176.01
Credit Card Charge	15079	2/19/2026	PrintRunner	T097 - Plant Sale	5314203 - Printing Services	469.85
Credit Card Charge	15080	2/19/2026	Short.com Inc	SLP075 - NACD SLP	5314207 - Web Hosting and Maintenance	17.00
Credit Card Charge	15086	2/19/2026	Alaska Airline	T042 - Advocacy Activities	5314306 - Airfare	35.00
Credit Card Charge	15097	2/19/2026	Tractor Supply	W170 - FY25-27 RGP:W170.5 - DIP	5314107 - Project Supplies	296.26
Credit Card Charge	15098	2/19/2026	Tractor Supply	W170 - FY25-27 RGP:W170.5 - DIP	5314107 - Project Supplies	131.67
Credit Card Charge	60566994	2/20/2026	Garmin	A010 - Administrative Expenses	5314205 - Garmin	43.86
Credit Card Charge	15089	2/23/2026	US Postal Service	T098 - Soil Health Testing	5314202 - Postage & Shipping	13.78
Credit Card Charge	15090	2/23/2026	US Postal Service	T098 - Soil Health Testing	5314202 - Postage & Shipping	12.89
Credit Card Charge	15091	2/23/2026	US Postal Service	T098 - Soil Health Testing	5314202 - Postage & Shipping	12.89
Liability Check	EFT	2/23/2026	Internal Revenue Service		3861004 - Federal Income Tax Payable	18,767.76
Check	EFT	2/24/2026	TPSC Benefits		5531215 - HRA Benefits	750.00
Credit Card Charge	15088	2/24/2026	Home Depot	T097 - Plant Sale	5314116 - Project Equipment	238.38
Credit Card Charge	15092	2/24/2026	Eventbrite	S100 - WDFW BuildingConservation Capacity	5314302 - Staff - Conference & Training	236.36
Credit Card Charge	15095	2/24/2026	Trader Joes	T044 - Board Intiatives & MeetingSupplies	5314310 - Board Meeting Snacks	65.49
Credit Card Charge	15105	2/24/2026	Nitro	A010 - Administrative Expenses	5314505 - Software Licenses	296.46
Credit Card Charge	15106	2/24/2026	Walrath	W170 - FY25-27 RGP:W170.5 - DIP	5314108 - Construction & Restoration Work	808.03
Credit Card Charge	15117	2/24/2026	ULINE	W170 - FY25-27 RGP:W170.5 - DIP	5314107 - Project Supplies	127.03
Credit Card Charge	15125	2/24/2026	Amazon	A010 - Administrative Expenses	5313101 - Office Supplies	12.15
Liability Check		2/24/2026	QuickBooks Payroll Service		Payroll	54,687.76
Bill Pmt -Check	EFT	2/25/2026	Verizon	A010 - Administrative Expenses	5314201 - Telephone	1,094.81
Bill Pmt -Check	23283	2/25/2026	Aimee Ornelas	E024 - Riverbend Construction	Restoration Crew Intern Stipend	1,600.00
Bill Pmt -Check	23284	2/25/2026	Any Seasons Tree & Landscape Services	W170 - FY25-27 RGP:W170.5 - DIP	5314108 - Construction & Restoration Work	9,747.00
Bill Pmt -Check	23285	2/25/2026	Ecostudies Institute	SLP075 - NACD SLP	560000 - Sub-Awards / Pass-Through	8,647.78
Bill Pmt -Check	23286	2/25/2026	Ghader Alrashid	E024 - Riverbend Construction	Restoration Crew Intern Stipend	1,452.50
Bill Pmt -Check	23287	2/25/2026	Marlena Blua	E024 - Riverbend Construction	Restoration Crew Intern Stipend	1,600.00
Bill Pmt -Check	23288	2/25/2026	Olympia Ecosystems	E024 - Riverbend Construction	560000 - Sub-Awards / Pass-Through	1,102.50
Bill Pmt -Check	23289	2/25/2026	Richard Gloor	E024 - Riverbend Construction	Restoration Crew Intern Stipend	1,600.00

Type	Num	Date	Name	Funding Source	Expense Account	Paid Amount
Bill Pmt -Check	23290	2/25/2026	Thurston Regional Planning Council	A010 - Administrative Expenses	5314902 · Organizational Dues	1,141.00
Bill Pmt -Check	23291	2/25/2026	WACD	E024 - Riverbend Construction	5314108 · Construction & Restoration Work	1,853.44
Bill Pmt -Check	23292	2/25/2026	Wild Fish Conservancy	E042 - Chehalis Tributary Data Collection	5314100 · Professional Services	1,388.10
Bill Pmt -Check	23293	2/25/2026	Crystal Springs	A010 - Administrative Expenses	5313101 · Office Supplies	35.08
Bill Pmt -Check	23294	2/25/2026	FP Mailing Solutions	A010 - Administrative Expenses	5314503 · Equipment Leases	121.43
Bill Pmt -Check	23295	2/25/2026	Hannah's Cleaning Service	A010 - Administrative Expenses	5314104 · Janitorial Services	700.00
Bill Pmt -Check	23296	2/25/2026	Olympia Computer	A010 - Administrative Expenses	5314103 · Computer Services	3,634.38
Bill Pmt -Check	23297	2/25/2026	Petrocard	A010 - Administrative Expenses	5313201 · Vehicle Fuel	455.80
Credit Card Charge	15093	2/25/2026	Office Depot	G019.122 - foundry10 Congress Support	5314107 · Project Supplies	26.31
Credit Card Charge	15094	2/25/2026	Office Depot	G019.122 - foundry10 Congress Support	5314107 · Project Supplies	30.69
Credit Card Charge	15110	2/25/2026	ULINE	W170 - FY25-27 RGP:W170.5 - DIP	5314107 · Project Supplies	482.68
Credit Card Charge	15121	2/25/2026	Costco	T030 - District Communications	5313101 · Office Supplies	39.46
Credit Card Charge	15122	2/25/2026	Staples	T097 - Plant Sale	5313101 · Office Supplies	73.68
Credit Card Charge	15123	2/25/2026	Kasco Manufacturing Co., Inc.	T096 - Soil Health Equipment Rentals	5354802 · Rental Equipment Maintenance	79.10
Credit Card Charge	15133	2/25/2026	Costco	A010 - Administrative Expenses	5945363 · Equipment & Office Furniture	76.78
Liability Check	EFT	2/25/2026	WA St Dept of Retirement Systems		3861005 · PERS Deferral Payable	4,137.86
Credit Card Charge	15099	2/26/2026	Amazon	A010 - Administrative Expenses	5313101 · Office Supplies	27.41
Credit Card Charge	15103	2/26/2026	US Postal Service	T098 - Soil Health Testing	5314202 · Postage & Shipping	28.31
Credit Card Charge	15116	2/26/2026	Tenino Market Fresh	A010 - Administrative Expenses	5313201 · Vehicle Fuel	93.40
Credit Card Charge		2/27/2026	ADT Security Services	A010 - Administrative Expenses	5314704 · Office Security	58.13
Credit Card Charge	19496349	2/27/2026	Mail Chimp	T030 - District Communications	5314207 · Web Hosting and Maintenance	110.25



BOARD MEETING ITEM SUMMARY SHEET

Agenda Item Title: WA State Ecology Scatter Creek Funding Agreement	
Lead Staff: Joey Burgess	Board Meeting Date: 03/25/26
Goal of Presentation:	<input checked="" type="checkbox"/> Decision <input type="checkbox"/> Information <input type="checkbox"/> Feedback
Description/Background:	<i>Please provide a description or background of the project.</i>
<p>The Lower Scatter Creek Feasibility Project addresses the Chehalis Basin Strategy Aquatic Species Restoration Plan through outreach, planning and conceptual design in the lowest 6.6 miles of Scatter Creek, from the WDFW Scatter Creek Unit and the confluence with the Chehalis River. This project broadly recruits a cohort of private landowners to complement conservation interests to develop riparian forest and woodland restoration as well as beaver coexistence projects. Within the 2-mile Confluence Reach downstream of James Road, we will work with an existing group of willing landowners to complete assessment, negotiation and conceptual design of a reach-scale in-stream and riparian stream restoration effort. The Confluence Reach includes existing beaver populations, freshwater mussels, and the most important coho spawning area in the basin.</p>	
Pros: Gaining valuable information on how to best approach the lowest reaches of Scatter Creek in terms of restoration, landowner goals and willingness for restoration, willingness to live with beaver, hydrology, species presence and more. Also, gaining designs for potential restoration pathways from qualified engineers.	Cons: The system is heavily impaired and has a mixed reputation of the "worth" of restoration of the creek. There is high anticipation in the community of what will happen with the Cooke aquaculture facility that will have many implications for how restoration looks and the dynamics of the creek along with the groundwater that feeds it.
Fiscal Impacts: <i>Please describe the costs associated with this action.</i>	
<p>Most of the costs will go to hiring engineers for designs and surveys. Other costs are for large scale outreach campaigns and workshops to educate the community on the advantages of beavers and beaver dominated systems.</p>	
Recommended Action:	<i>What decision do you recommend the board make?</i>
I recommend the board approves this grant so we can help answer many lingering questions about approa	
Legal Review:	<input type="checkbox"/> Yes <input checked="" type="checkbox"/> No <input type="checkbox"/> Not Required
Supporting Documents: <i>Please list below and attach supporting documents (contracts, maps, agreements, draft resolution or other documents).</i>	
Watermarked Agreement from ASRP	





Agreement No. OCBASRP-2527-ThurCD-00060

OFFICE OF CHEHALIS BASIN AQUATIC SPECIES RESTORATION PLAN AGREEMENT

BETWEEN

THE STATE OF WASHINGTON DEPARTMENT OF ECOLOGY

AND

THURSTON CONSERVATION DISTRICT

This is a binding Agreement entered into by and between the state of Washington, Department of Ecology, hereinafter referred to as “ECOLOGY,” and Thurston Conservation District, hereinafter referred to as the “RECIPIENT,” to carry out with the provided funds activities described herein.

GENERAL INFORMATION

Project Title:	Scatter Creek RM 0-6.6 Project Initialization
Total Cost:	\$487,897.00
Total Eligible Cost:	\$487,897.00
Ecology Share:	\$487,897.00
Recipient Share:	\$0.00
The Effective Date of this Agreement is:	06/01/2026
The Expiration Date of this Agreement is no later than:	05/30/2028
Project Type:	Ecology Grant

Project Short Description:

The Scatter Creek RM 0–6.6 Project Initialization supports the Chehalis Basin Strategy’s Aquatic Species Restoration Program through outreach, planning, and conceptual design in the lowest 6.6 miles of Scatter Creek, with a primary focus on landowner engagement and project development including development of a conceptual basis of design report for RM 0-2.3.

Project Long Description:

The Scatter Creek RM 0–6.6 Project Initialization supports the Chehalis Basin Strategy’s Aquatic Species Restoration Program through outreach, planning, and conceptual design in the lowest 6.6 miles of Scatter Creek, with a primary focus on landowner engagement and project development over the whole area, and development of a conceptual basis of design report for in-water work in the section of Scatter Creek for RM 0-2.3.

The project engages private landowners to support restoration of riparian forests and oak woodlands, enhance habitat complexity, and promote beaver coexistence as a natural ecological process. Within the 2.3-mile Confluence Reach downstream of James Road, Thurston Conservation District (TCD) will work with willing

Agreement No: OCBASRP-2527-ThurCD-00060
Project Title: Scatter Creek RM 0-6.6 Project Initialization
Recipient Name: Thurston Conservation District

landowners to conduct detailed assessments, negotiate agreements, and develop a conceptual design for reach-scale in-stream and riparian restoration. This reach contains key coho spawning habitat, existing beaver populations, Pacific lamprey, and freshwater mussels, making it a critical area for restoration efforts in the Chehalis Basin.

The whole project area encompasses three prioritized reaches. Reach 1 (Confluence Reach) is the highest priority due to its importance for coho and steelhead spawning, perennial flows, and ecological connectivity. Reach 3 (including the extent of WDFW lands) is also high priority because of its contributions to maintaining water inputs from Port Blakely and its potential for beaver-managed habitats to enhance groundwater recharge and sustain downstream flows. Reach 2 is considered medium priority due to low summer flows, though opportunities exist to promote beaver activity and implement beaver dam analogs (BDAs) to restore hydrologic function. Across the riverscape, limiting factors include the loss of oak riparian forest, conflicts between beaver activity and landowners, and seasonal low flows that constrain aquatic habitat function.

Within the Confluence Reach (reach 1), TCD will collect preliminary topographic, hydrologic, biological, and geomorphic data to inform conceptual design. Restoration actions will include placement of large woody debris and engineered log jams to reduce channel incision, increase pool-riffle complexity, and improve floodplain connectivity; rehabilitation of reed canary grass marshes to enhance rearing habitat; re-establishment of woody riparian vegetation, including fast-growing and late-seral species; and implementation of agricultural best management practices, such as exclusion fencing, silvopasture, and runoff control. Assessments will also address flood hazard management, protection of cultural resources, and conservation of freshwater mussels to avoid adverse impacts during future restoration.

Over the whole project area, project development will use a multi-modal landowner engagement strategy—including mailings, workshops, peer-to-peer outreach, and social network mobilization—to build a cohort of early adopters for riparian and beaver-focused restoration. Upstream of James Road, 74 landowners manage an average of 8 acres each, and downstream in the Confluence Reach, 20 landowners manage 495 acres, with 176 acres already under landowner agreements. Outreach will recruit additional participants, build consensus for reach-scale restoration, and integrate water conservation education aligned with the Scatter Creek Local Strategy, while fostering long-term stewardship within the community.

TCD will collaborate with US Fish and Wildlife Service, Wild Fish Conservancy, Washington Department of Fish and Wildlife, Chehalis Tribe, Creekside Conservancy, South of the Sound Community Farmland Trust, South Sound Beavers, and South Puget Sound Salmon Enhancement Group. Activities will include staff training in freshwater mussel surveys, sharing biological and hydrologic data, and integrating low-tech, process-based restoration approaches to maximize ecological outcomes while reducing reliance on external contractors.

Overall Goal:

The overall goal of the project is to develop a Conceptual Basis of Design Report that outlines a phased, reach-scale restoration strategy for the lower 6.6 miles of Scatter Creek. The project focuses on identifying and planning in-stream and riparian restoration actions to enhance coho and steelhead spawning and rearing, rehabilitate oak woodland and riparian forests, and promote beaver coexistence. Through targeted landowner engagement, biological and geomorphic assessments, and conceptual design, the project will define feasible restoration approaches, build a cohort of local stewards, integrate low-tech, process-based techniques, and provide a foundation for long-term ecological resilience and community-supported creek stewardship.

Agreement No: OCBASRP-2527-ThurCD-00060
 Project Title: Scatter Creek RM 0-6.6 Project Initialization
 Recipient Name: Thurston Conservation District

RECIPIENT INFORMATION

Organization Name: Thurston Conservation District

Federal Tax ID: 91-1011612

UEI Number: RFVSKKZZLNU4

Mailing Address: 582 Tilley Court SE, Suite 152
 Tumwater, WA 98501

Physical Address: 582 Tilley Court SE, Suite 152

Contacts

<p>Project Manager</p>	<p>Joey Burgess Habitat Restoration Specialist</p> <p>582 Tilley Court SE, Suite 152 Tumwater, Washington 98501 Email: jburgess@thurstoncd.com Phone: (360) 754-3588</p>
<p>Billing Contact</p>	<p>Yan Dong Senior Accountant</p> <p>582 Tilley Court SE, Suite 152 Tumwater, Washington 98501 Email: ydong@thurstoncd.com Phone: (360) 754-3588</p>
<p>Authorized Signatory</p>	<p>Sarah Moorehead Executive Director</p> <p>582 Tilley Rd SW Suite #152 Tumwater, Washington 98501 Email: smoorehead@thurstoncd.com Phone: (360) 754-3588</p>

Agreement No: OCBASRP-2527-ThurCD-00060
Project Title: Scatter Creek RM 0-6.6 Project Initialization
Recipient Name: Thurston Conservation District

ECOLOGY INFORMATION

Mailing Address: Department of Ecology
Office of Chehalis Basin
PO BOX 47600
Olympia, WA 98504-7600

Physical Address: Office of Chehalis Basin
300 Desmond Drive SE
Lacey, WA 98503

Contacts

Project Manager	Noreen Bolo PO Box 47600 Olympia, Washington 98504-7600 Email: nobo461@ecy.wa.gov Phone: (564) 250-0352
Financial Manager	Noreen Bolo PO Box 47600 Olympia, Washington 98504-7600 Email: nobo461@ecy.wa.gov Phone: (564) 250-0352

Agreement No: OCBASRP-2527-ThurCD-00060
 Project Title: Scatter Creek RM 0-6.6 Project Initialization
 Recipient Name: Thurston Conservation District

SCOPE OF WORK

Task Number: 1 **Task Cost: \$31,350.00**

Task Title: Grant Administration

Task Description:

A. The RECIPIENT shall carry out all work necessary to meet ECOLOGY grant or loan administration requirements. Responsibilities include but are not limited to maintenance of project records; submittal of requests for reimbursement and corresponding backup documentation; progress reports; an EAGL (Ecology Administration of Grants and Loans) recipient close out report; and a two-page Final Report (including photos, if applicable). In the event that the RECIPIENT elects to use a contractor to complete project elements, the RECIPIENT shall retain responsibility for the oversight and management of this funding agreement.

B. The RECIPIENT shall keep documentation that demonstrates the project is in compliance with applicable procurement, contracting, and interlocal agreement requirements; permitting requirements, including application for, receipt of, and compliance with all required permits, licenses, easements, or property rights necessary for the project; and submittal of required performance items. This document shall be made available to ECOLOGY upon request.

C. The RECIPIENT shall maintain effective communication with ECOLOGY and maintain up-to-date staff contact information in the EAGL system. The RECIPIENT shall carry out this project in accordance with any completion dates outlined in this agreement.

Task Goal Statement:

Properly managed and fully documented project that meets ECOLOGY’s grant and loan administrative requirements.

Task Expected Outcome:

- Timely and complete submittal of requests for reimbursement, quarterly progress reports, and Recipient Closeout Report.
- Properly maintained project documentation.

Grant Administration

Deliverables

Number	Description	Due Date
1.1	Progress Reports that include descriptions of work accomplished, project challenges, and changes in the project schedule. Submitted at least quarterly.	
1.2	Recipient Closeout Report (EAGL Form).	

Agreement No: OCBASRP-2527-ThurCD-00060
Project Title: Scatter Creek RM 0-6.6 Project Initialization
Recipient Name: Thurston Conservation District

SCOPE OF WORK

Task Number: 2 **Task Cost:** \$456,547.00

Task Title: Planning and Studies

Task Description:

A. The RECIPIENT will complete the community outreach and conceptual design activities and submit all required documents to ECOLOGY. Documents include the following:

1. A WDFW-initiated Cultural Resources Consultation.
2. A minimum of one completed Site Assessment and Project Proposal (SAPP) Form.
3. Collection of Signed Landowner Acknowledgment Forms.
4. A Quality Assurance Project Plan (QAPP), if required.
5. Community Engagement Outputs including but not limited to final reports describing the level of effort, community response, copies of materials, and findings.
6. Conceptual Basis of Design Report.

B. The RECIPIENT will do a regional search for existing outreach content before producing any new materials. All educational materials developed under this agreement must include ECOLOGY, OCB [and Federal if applicable] funding recognition. Anticipated outreach material includes but are not limited to mailed invitations, flyers, brochures, posters, factsheets, and digital media (social media, website content, blog posts).

C. If the RECIPIENT organizes and convenes community outreach events, such as a class, workshop, public presentation (online or in person), or tour, the RECIPIENT will provide an Outreach Summary after each event. The Outreach Summary will include the date, location, number of participants, and photos as relevant.

The event may include but is not limited to the following:

- A report documenting landowner willingness and site assessment information to Office of Chehalis Basin.
- Up to 10 events, and no more \$100 per meeting for light refreshments associated with this project.

D. The RECIPIENT will oversee the project and ensure the procurement of professional services to complete the Conceptual Basis of Design. The RECIPIENT must submit a copy of the contract to ECOLOGY. The Conceptual Basis of Design work includes:

1. Site Survey, Imagery, Hydrology
2. Forest health/Agroforestry Assessment
3. Complete Restoration Concept – Menu of Treatments (Alternative Analysis)
4. Cost Estimates

Task Goal Statement:

Development of a Concept Basis of Design through community engagement and collaborative project development.

Task Expected Outcome:

A Conceptual Basis of Design that provides a collaborative framework for planning reach-scale in-stream and riparian restoration downstream of Scatter Creek, while facilitating engagement with landowners and stakeholders.

Agreement No: OCBASRP-2527-ThurCD-00060
 Project Title: Scatter Creek RM 0-6.6 Project Initialization
 Recipient Name: Thurston Conservation District

Planning and Studies

Deliverables

Number	Description	Due Date
2.1	Upload to EAGL the WDFW Cultural Resources Review letter.	
2.2	Upload to EAGL completed Site Assessment and Project Proposal (SAPP) form.	
2.3	Upload to EAGL Signed Landowner Acknowledgement(s). Provide a template agreement to the OCB Project Specialist for approval before obtaining landowner signature for all properties.	
2.4	Upload to EAGL Quality Assurance Project Plan (QAPP), if required.	
2.5	Upload to EAGL Concept Basis of Design.	
2.6	Upload to EAGL Community Engagement Outputs.	
2.7	Upload to EAGL agendas, attendance metrics, outreach materials, and Outreach Summary after each outreach event. Provide a summary of this information in the Recipient Closeout Report (Task 1).	
2.8	Upload to EAGL copy of outreach presentation materials (PowerPoint or PDF).	
2.9	Upload to EAGL copy of draft educational materials for review, and notify the OCB Project Specialist.	
2.10	Upload to EAGL copy of final educational materials.	
2.11	Upload to EAGL executed contract for professional services, including amendments (if applicable).	

BUDGET

Funding Distribution EG260563

NOTE: *The above funding distribution number is used to identify this specific agreement and budget on payment remittances and may be referenced on other communications from ECOLOGY. Your agreement may have multiple funding distribution numbers to identify each budget.*

Funding Title: OCB 2527 HRP
 Funding Type: Grant
 Funding Effective Date: 06/01/2026 Funding Expiration Date: 05/30/2027
 Funding Source:

Title: State Building Construction Account (SBCA)

Fund: FD

Type: State

Funding Source %: 100%

Description: 2023-2025 appropriation for the Chehalis Basin Strategy

Approved Indirect Costs Rate: Approved State Indirect Rate: 25%
 Recipient Match %: 0%
 InKind Interlocal Allowed: No
 InKind Other Allowed: No
 Is this Funding Distribution used to match a federal grant? No

OCB 2527 HRP	Task Total
Grant Administration	\$ 31,350.00
Planning and Studies	\$ 456,547.00

Total: \$ 487,897.00

Agreement No: OCBASRP-2527-ThurCD-00060
 Project Title: Scatter Creek RM 0-6.6 Project Initialization
 Recipient Name: Thurston Conservation District

Funding Distribution Summary

Recipient / Ecology Share

Funding Distribution Name	Recipient Match %	Recipient Share	Ecology Share	Total
OCB 2527 HRP	0.00 %	\$ 0.00	\$ 487,897.00	\$ 487,897.00
Total		\$ 0.00	\$ 487,897.00	\$ 487,897.00

AGREEMENT SPECIFIC TERMS AND CONDITIONS

N/A

SPECIAL TERMS AND CONDITIONS

GENERAL FEDERAL CONDITIONS

If a portion or all of the funds for this agreement are provided through federal funding sources or this agreement is used to match a federal grant award, the following terms and conditions apply to you.

A. CERTIFICATION REGARDING SUSPENSION, DEBARMENT, INELIGIBILITY OR VOLUNTARY EXCLUSION:

1. The RECIPIENT/CONTRACTOR, by signing this agreement, certifies that it is not suspended, debarred, proposed for debarment, declared ineligible or otherwise excluded from contracting with the federal government, or from receiving contracts paid for with federal funds. If the RECIPIENT/CONTRACTOR is unable to certify to the statements contained in the certification, they must provide an explanation as to why they cannot.
2. The RECIPIENT/CONTRACTOR shall provide immediate written notice to ECOLOGY if at any time the RECIPIENT/CONTRACTOR learns that its certification was erroneous when submitted or had become erroneous by reason of changed circumstances.
3. The terms covered transaction, debarred, suspended, ineligible, lower tier covered transaction, participant, person, primary covered transaction, principal, proposal, and voluntarily excluded, as used in this clause, have the meaning set out in the Definitions and Coverage sections of rules implementing Executive Order 12549. You may contact ECOLOGY for assistance in obtaining a copy of those regulations.
4. The RECIPIENT/CONTRACTOR agrees it shall not knowingly enter into any lower tier covered transaction with a person who is proposed for debarment under the applicable Code of Federal Regulations, debarred, suspended, declared ineligible, or voluntarily excluded from participation in this covered transaction.
5. The RECIPIENT/CONTRACTOR further agrees by signing this agreement, that it will include this clause titled "CERTIFICATION REGARDING SUSPENSION, DEBARMENT, INELIGIBILITY OR VOLUNTARY EXCLUSION" without modification in all lower tier covered transactions and in all solicitations for lower tier covered transactions.
6. Pursuant to 2CFR180.330, the RECIPIENT/CONTRACTOR is responsible for ensuring that any lower tier

Agreement No: OCBASRP-2527-ThurCD-00060
Project Title: Scatter Creek RM 0-6.6 Project Initialization
Recipient Name: Thurston Conservation District

covered transaction complies with certification of suspension and debarment requirements.

7. RECIPIENT/CONTRACTOR acknowledges that failing to disclose the information required in the Code of Federal Regulations may result in the delay or negation of this funding agreement, or pursuance of legal remedies, including suspension and debarment.
8. RECIPIENT/CONTRACTOR agrees to keep proof in its agreement file, that it, and all lower tier recipients or contractors, are not suspended or debarred, and will make this proof available to ECOLOGY before requests for reimbursements will be approved for payment. RECIPIENT/CONTRACTOR must run a search in <http://www.sam.gov> and print a copy of completed searches to document proof of compliance.

B. FEDERAL FUNDING ACCOUNTABILITY AND TRANSPARENCY ACT (FFATA) REPORTING

REQUIREMENTS:

CONTRACTOR/RECIPIENT must complete the FFATA Data Collection Form (ECY 070-395) and return it with the signed agreement to ECOLOGY.

Any CONTRACTOR/RECIPIENT that meets each of the criteria below must report compensation for its five top executives using the FFATA Data Collection Form.

- Receives more than \$30,000 in federal funds under this award.
- Receives more than 80 percent of its annual gross revenues from federal funds.
- Receives more than \$25,000,000 in annual federal funds.

Ecology will not pay any invoices until it has received a completed and signed FFATA Data Collection Form.

Ecology is required to report the FFATA information for federally funded agreements, including the required Unique Entity Identifier in www.sam.gov <http://www.sam.gov> within 30 days of agreement signature. The FFATA information will be available to the public at www.usaspending.gov <http://www.usaspending.gov>.

For more details on FFATA requirements, see www.fsr.gov <http://www.fsr.gov>.

C. FEDERAL FUNDING PROHIBITION ON CERTAIN TELECOMMUNICATIONS OR VIDEO SURVEILLANCE SERVICES OR EQUIPMENT:

As required by 2 CFR 200.216, federal grant or loan recipients and subrecipients are prohibited from obligating or expending loan or grant funds to:

1. Procure or obtain;
2. Extend or renew a contract to procure or obtain; or
3. Enter into a contract (or extend or renew a contract) to procure or obtain equipment, services, or systems that use covered telecommunications equipment, video surveillance services or services as a substantial or essential component of any system, or as critical technology as part of any system. As described in [Public Law 115-232](https://www.govinfo.gov/content/pkg/PLAW-115publ232/pdf/PLAW-115publ232.pdf) <https://www.govinfo.gov/content/pkg/PLAW-115publ232/pdf/PLAW-115publ232.pdf>, section 889, covered telecommunications equipment is telecommunications equipment produced by Huawei Technologies Company or ZTE Corporation (or any subsidiary or affiliate of such entities).

Recipients, subrecipients, and borrowers also may not use federal funds to purchase certain prohibited equipment, systems, or services, including equipment, systems, or services produced or provided by entities identified in section 889, are recorded in the [System for Award Management \(SAM\)](https://sam.gov/SAM) <https://sam.gov/SAM> exclusion list.

Agreement No: OCBASRP-2527-ThurCD-00060
Project Title: Scatter Creek RM 0-6.6 Project Initialization
Recipient Name: Thurston Conservation District

GENERAL TERMS AND CONDITIONS

Pertaining to Grant and Loan Agreements With the state of Washington, Department of Ecology

GENERAL TERMS AND CONDITIONS

For DEPARTMENT OF ECOLOGY GRANTS and LOANS

07/01/2023 Version

1. ADMINISTRATIVE REQUIREMENTS

- a) RECIPIENT shall follow the "Administrative Requirements for Recipients of Ecology Grants and Loans – EAGL Edition." (<https://fortress.wa.gov/ecy/publications/SummaryPages/2301002.html>)
- b) RECIPIENT shall complete all activities funded by this Agreement and be fully responsible for the proper management of all funds and resources made available under this Agreement.
- c) RECIPIENT agrees to take complete responsibility for all actions taken under this Agreement, including ensuring all subgrantees and contractors comply with the terms and conditions of this Agreement. ECOLOGY reserves the right to request proof of compliance by subgrantees and contractors.
- d) RECIPIENT's activities under this Agreement shall be subject to the review and approval by ECOLOGY for the extent and character of all work and services.

2. AMENDMENTS AND MODIFICATIONS

This Agreement may be altered, amended, or waived only by a written amendment executed by both parties. No subsequent modification(s) or amendment(s) of this Agreement will be of any force or effect unless in writing and signed by authorized representatives of both parties. ECOLOGY and the RECIPIENT may change their respective staff contacts and administrative information without the concurrence of either party.

3. ACCESSIBILITY REQUIREMENTS FOR COVERED TECHNOLOGY

The RECIPIENT must comply with the Washington State Office of the Chief Information Officer, OCIO Policy no. 188, Accessibility (<https://ocio.wa.gov/policy/accessibility>) as it relates to "covered technology." This requirement applies to all products supplied under the Agreement, providing equal access to information technology by individuals with disabilities, including and not limited to web sites/pages, web-based applications, software systems, video and audio content, and electronic documents intended for publishing on Ecology's public web site.

4. ARCHAEOLOGICAL AND CULTURAL RESOURCES

RECIPIENT shall take all reasonable action to avoid, minimize, or mitigate adverse effects to archaeological and historic archaeological sites, historic buildings/structures, traditional cultural places, sacred sites, or other cultural resources, hereby referred to as Cultural Resources.

The RECIPIENT must agree to hold harmless ECOLOGY in relation to any claim related to Cultural Resources discovered, disturbed, or damaged due to the RECIPIENT's project funded under this Agreement.

RECIPIENT shall:

- a) Contact the ECOLOGY Program issuing the grant or loan to discuss any Cultural Resources requirements for their project:
 - Cultural Resource Consultation and Review should be initiated early in the project planning process and must be completed prior to expenditure of Agreement funds as required by applicable State and Federal requirements.
 - * For state funded construction, demolition, or land acquisitions, comply with Governor Executive Order 21-02, Archaeological and Cultural Resources.
 - For projects with any federal involvement, comply with the National Historic Preservation Act of 1966 (Section

Agreement No: OCBASRP-2527-ThurCD-00060
Project Title: Scatter Creek RM 0-6.6 Project Initialization
Recipient Name: Thurston Conservation District

106).

b) If required by the ECOLOGY Program, submit an Inadvertent Discovery Plan (IDP) to ECOLOGY prior to implementing any project that involves field activities. ECOLOGY will provide the IDP form.

RECIPIENT shall:

- Keep the IDP at the project site.
 - Make the IDP readily available to anyone working at the project site.
 - Discuss the IDP with staff, volunteers, and contractors working at the project site.
 - Implement the IDP when Cultural Resources or human remains are found at the project site.
- c) If any Cultural Resources are found while conducting work under this Agreement, follow the protocol outlined in the project IDP.
- Immediately stop work and notify the ECOLOGY Program, who will notify the Department of Archaeology and Historic Preservation at (360) 586-3065, any affected Tribe, and the local government.
- d) If any human remains are found while conducting work under this Agreement, follow the protocol outlined in the project IDP.
- Immediately stop work and notify the local Law Enforcement Agency or Medical Examiner/Coroner's Office, the Department of Archaeology and Historic Preservation at (360) 790-1633, and then the ECOLOGY Program.
- e) Comply with RCW 27.53, RCW 27.44, and RCW 68.50.645, and all other applicable local, state, and federal laws protecting Cultural Resources and human remains.

5. ASSIGNMENT

No right or claim of the RECIPIENT arising under this Agreement shall be transferred or assigned by the RECIPIENT.

6. COMMUNICATION

RECIPIENT shall make every effort to maintain effective communications with the RECIPIENT's designees, ECOLOGY, all affected local, state, or federal jurisdictions, and any interested individuals or groups.

7. COMPENSATION

- a) Any work performed prior to effective date of this Agreement will be at the sole expense and risk of the RECIPIENT. ECOLOGY must sign the Agreement before any payment requests can be submitted.
- b) Payments will be made on a reimbursable basis for approved and completed work as specified in this Agreement.
- c) RECIPIENT is responsible to determine if costs are eligible. Any questions regarding eligibility should be clarified with ECOLOGY prior to incurring costs. Costs that are conditionally eligible require approval by ECOLOGY prior to expenditure.
- d) RECIPIENT shall not invoice more than once per month unless agreed on by ECOLOGY.
- e) ECOLOGY will not process payment requests without the proper reimbursement forms, Progress Report and supporting documentation. ECOLOGY will provide instructions for submitting payment requests.
- f) ECOLOGY will pay the RECIPIENT thirty (30) days after receipt of a properly completed request for payment.
- g) RECIPIENT will receive payment through Washington State's Office of Financial Management's Statewide Payee Desk. To receive payment you must register as a statewide vendor by submitting a statewide vendor registration form and an IRS W-9 form at website, <https://ofm.wa.gov/it-systems/statewide-vendorpayee-services>. If you have questions about the vendor registration process, you can contact Statewide Payee Help Desk at (360) 407-8180 or email PayeeRegistration@ofm.wa.gov.
- h) ECOLOGY may, at its sole discretion, withhold payments claimed by the RECIPIENT if the RECIPIENT fails to satisfactorily comply with any term or condition of this Agreement.
- i) Monies withheld by ECOLOGY may be paid to the RECIPIENT when the work described herein, or a portion thereof, has been completed if, at ECOLOGY's sole discretion, such payment is reasonable and approved according

Agreement No: OCBASRP-2527-ThurCD-00060
Project Title: Scatter Creek RM 0-6.6 Project Initialization
Recipient Name: Thurston Conservation District

to this Agreement, as appropriate, or upon completion of an audit as specified herein.

j) RECIPIENT must submit within thirty (30) days after the expiration date of this Agreement, all financial, performance, and other reports required by this Agreement. Failure to comply may result in delayed reimbursement.

8. COMPLIANCE WITH ALL LAWS

RECIPIENT agrees to comply fully with all applicable federal, state and local laws, orders, regulations, and permits related to this Agreement, including but not limited to:

a) RECIPIENT agrees to comply with all applicable laws, regulations, and policies of the United States and the State of Washington which affect wages and job safety.

b) RECIPIENT agrees to be bound by all applicable federal and state laws, regulations, and policies against discrimination.

c) RECIPIENT certifies full compliance with all applicable state industrial insurance requirements.

d) RECIPIENT agrees to secure and provide assurance to ECOLOGY that all the necessary approvals and permits required by authorities having jurisdiction over the project are obtained. RECIPIENT must include time in their project timeline for the permit and approval processes.

ECOLOGY shall have the right to immediately terminate for cause this Agreement as provided herein if the RECIPIENT fails to comply with above requirements.

If any provision of this Agreement violates any statute or rule of law of the state of Washington, it is considered modified to conform to that statute or rule of law.

9. CONFLICT OF INTEREST

RECIPIENT and ECOLOGY agree that any officer, member, agent, or employee, who exercises any function or responsibility in the review, approval, or carrying out of this Agreement, shall not have any personal or financial interest, direct or indirect, nor affect the interest of any corporation, partnership, or association in which he/she is a part, in this Agreement or the proceeds thereof.

10. CONTRACTING FOR GOODS AND SERVICES

RECIPIENT may contract to buy goods or services related to its performance under this Agreement. RECIPIENT shall award all contracts for construction, purchase of goods, equipment, services, and professional architectural and engineering services through a competitive process, if required by State law. RECIPIENT is required to follow procurement procedures that ensure legal, fair, and open competition.

RECIPIENT must have a standard procurement process or follow current state procurement procedures.

RECIPIENT may be required to provide written certification that they have followed their standard procurement procedures and applicable state law in awarding contracts under this Agreement.

ECOLOGY reserves the right to inspect and request copies of all procurement documentation, and review procurement practices related to this Agreement. Any costs incurred as a result of procurement practices not in compliance with state procurement law or the RECIPIENT's normal procedures may be disallowed at ECOLOGY's sole discretion.

11. DISPUTES

When there is a dispute with regard to the extent and character of the work, or any other matter related to this Agreement the determination of ECOLOGY will govern, although the RECIPIENT shall have the right to appeal decisions as provided for below:

a) RECIPIENT notifies the funding program of an appeal request.

b) Appeal request must be in writing and state the disputed issue(s).

c) RECIPIENT has the opportunity to be heard and offer evidence in support of its appeal.

d) ECOLOGY reviews the RECIPIENT's appeal.

Agreement No: OCBASRP-2527-ThurCD-00060
Project Title: Scatter Creek RM 0-6.6 Project Initialization
Recipient Name: Thurston Conservation District

e) ECOLOGY sends a written answer within ten (10) business days, unless more time is needed, after concluding the review.

The decision of ECOLOGY from an appeal will be final and conclusive, unless within thirty (30) days from the date of such decision, the RECIPIENT furnishes to the Director of ECOLOGY a written appeal. The decision of the Director or duly authorized representative will be final and conclusive.

The parties agree that this dispute process will precede any action in a judicial or quasi-judicial tribunal.

Appeals of the Director's decision will be brought in the Superior Court of Thurston County. Review of the Director's decision will not be taken to Environmental and Land Use Hearings Office.

Pending final decision of a dispute, the RECIPIENT agrees to proceed diligently with the performance of this Agreement and in accordance with the decision rendered.

Nothing in this Agreement will be construed to limit the parties' choice of another mutually acceptable method, in addition to the dispute resolution procedure outlined above.

12. ENVIRONMENTAL DATA STANDARDS

a) RECIPIENT shall prepare a Quality Assurance Project Plan (QAPP) for a project that collects or uses environmental measurement data. RECIPIENTS unsure about whether a QAPP is required for their project shall contact the ECOLOGY Program issuing the grant or loan. If a QAPP is required, the RECIPIENT shall:

- Use ECOLOGY's QAPP Template/Checklist provided by the ECOLOGY, unless ECOLOGY Quality Assurance (QA) officer or the Program QA coordinator instructs otherwise.
- Follow ECOLOGY's Guidelines for Preparing Quality Assurance Project Plans for Environmental Studies, July 2004 (Ecology Publication No. 04-03-030).
- Submit the QAPP to ECOLOGY for review and approval before the start of the work.

b) RECIPIENT shall submit environmental data that was collected on a project to ECOLOGY using the Environmental Information Management system (EIM), unless the ECOLOGY Program instructs otherwise. The RECIPIENT must confirm with ECOLOGY that complete and correct data was successfully loaded into EIM, find instructions at: <http://www.ecy.wa.gov/eim>.

c) RECIPIENT shall follow ECOLOGY's data standards when Geographic Information System (GIS) data is collected and processed. Guidelines for Creating and Accessing GIS Data are available at:

<https://ecology.wa.gov/Research-Data/Data-resources/Geographic-Information-Systems-GIS/Standards>.

RECIPIENT, when requested by ECOLOGY, shall provide copies to ECOLOGY of all final GIS data layers, imagery, related tables, raw data collection files, map products, and all metadata and project documentation.

13. GOVERNING LAW

This Agreement will be governed by the laws of the State of Washington, and the venue of any action brought hereunder will be in the Superior Court of Thurston County.

14. INDEMNIFICATION

ECOLOGY will in no way be held responsible for payment of salaries, consultant's fees, and other costs related to the project described herein, except as provided in the Scope of Work.

To the extent that the Constitution and laws of the State of Washington permit, each party will indemnify and hold the other harmless from and against any liability for any or all injuries to persons or property arising from the negligent act or omission of that party or that party's agents or employees arising out of this Agreement.

15. INDEPENDENT STATUS

The employees, volunteers, or agents of each party who are engaged in the performance of this Agreement will continue to be employees, volunteers, or agents of that party and will not for any purpose be employees, volunteers, or agents of the other party.

Agreement No: OCBASRP-2527-ThurCD-00060
Project Title: Scatter Creek RM 0-6.6 Project Initialization
Recipient Name: Thurston Conservation District

16. KICKBACKS

RECIPIENT is prohibited from inducing by any means any person employed or otherwise involved in this Agreement to give up any part of the compensation to which he/she is otherwise entitled to or receive any fee, commission, or gift in return for award of a subcontract hereunder.

17. MINORITY AND WOMEN'S BUSINESS ENTERPRISES (MWBE)

RECIPIENT is encouraged to solicit and recruit, to the extent possible, certified minority-owned (MBE) and women-owned (WBE) businesses in purchases and contracts initiated under this Agreement.

Contract awards or rejections cannot be made based on MWBE participation; however, the RECIPIENT is encouraged to take the following actions, when possible, in any procurement under this Agreement:

- a) Include qualified minority and women's businesses on solicitation lists whenever they are potential sources of goods or services.
- b) Divide the total requirements, when economically feasible, into smaller tasks or quantities, to permit maximum participation by qualified minority and women's businesses.
- c) Establish delivery schedules, where work requirements permit, which will encourage participation of qualified minority and women's businesses.
- d) Use the services and assistance of the Washington State Office of Minority and Women's Business Enterprises (OMWBE) (866-208-1064) and the Office of Minority Business Enterprises of the U.S. Department of Commerce, as appropriate.

18. ORDER OF PRECEDENCE

In the event of inconsistency in this Agreement, unless otherwise provided herein, the inconsistency shall be resolved by giving precedence in the following order: (a) applicable federal and state statutes and regulations; (b) The Agreement; (c) Scope of Work; (d) Special Terms and Conditions; (e) Any provisions or terms incorporated herein by reference, including the "Administrative Requirements for Recipients of Ecology Grants and Loans"; (f) Ecology Funding Program Guidelines; and (g) General Terms and Conditions.

19. PRESENTATION AND PROMOTIONAL MATERIALS

ECOLOGY reserves the right to approve RECIPIENT's communication documents and materials related to the fulfillment of this Agreement:

- a) If requested, RECIPIENT shall provide a draft copy to ECOLOGY for review and approval ten (10) business days prior to production and distribution.
- b) RECIPIENT shall include time for ECOLOGY's review and approval process in their project timeline.
- c) If requested, RECIPIENT shall provide ECOLOGY two (2) final copies and an electronic copy of any tangible products developed.

Copies include any printed materials, and all tangible products developed such as brochures, manuals, pamphlets, videos, audio tapes, CDs, curriculum, posters, media announcements, or gadgets with a message, such as a refrigerator magnet, and any online communications, such as web pages, blogs, and twitter campaigns. If it is not practical to provide a copy, then the RECIPIENT shall provide a description (photographs, drawings, printouts, etc.) that best represents the item.

Any communications intended for public distribution that uses ECOLOGY's logo shall comply with ECOLOGY's graphic requirements and any additional requirements specified in this Agreement. Before the use of ECOLOGY's logo contact ECOLOGY for guidelines.

RECIPIENT shall acknowledge in the communications that funding was provided by ECOLOGY.

20. PROGRESS REPORTING

Agreement No: OCBASRP-2527-ThurCD-00060
Project Title: Scatter Creek RM 0-6.6 Project Initialization
Recipient Name: Thurston Conservation District

- a) RECIPIENT must satisfactorily demonstrate the timely use of funds by submitting payment requests and progress reports to ECOLOGY. ECOLOGY reserves the right to amend or terminate this Agreement if the RECIPIENT does not document timely use of funds.
- b) RECIPIENT must submit a progress report with each payment request. Payment requests will not be processed without a progress report. ECOLOGY will define the elements and frequency of progress reports.
- c) RECIPIENT shall use ECOLOGY's provided progress report format.
- d) Quarterly progress reports will cover the periods from January 1 through March 31, April 1 through June 30, July 1 through September 30, and October 1 through December 31. Reports shall be submitted within thirty (30) days after the end of the quarter being reported.
- e) RECIPIENT must submit within thirty (30) days of the expiration date of the project, unless an extension has been approved by ECOLOGY, all financial, performance, and other reports required by the Agreement and funding program guidelines. RECIPIENT shall use the ECOLOGY provided closeout report format.

21. PROPERTY RIGHTS

- a) Copyrights and Patents. When the RECIPIENT creates any copyrightable materials or invents any patentable property under this Agreement, the RECIPIENT may copyright or patent the same but ECOLOGY retains a royalty free, nonexclusive, and irrevocable license to reproduce, publish, recover, or otherwise use the material(s) or property, and to authorize others to use the same for federal, state, or local government purposes.
- b) Publications. When the RECIPIENT or persons employed by the RECIPIENT use or publish ECOLOGY information; present papers, lectures, or seminars involving information supplied by ECOLOGY; or use logos, reports, maps, or other data in printed reports, signs, brochures, pamphlets, etc., appropriate credit shall be given to ECOLOGY.
- c) Presentation and Promotional Materials. ECOLOGY shall have the right to use or reproduce any printed or graphic materials produced in fulfillment of this Agreement, in any manner ECOLOGY deems appropriate. ECOLOGY shall acknowledge the RECIPIENT as the sole copyright owner in every use or reproduction of the materials.
- d) Tangible Property Rights. ECOLOGY's current edition of "Administrative Requirements for Recipients of Ecology Grants and Loans," shall control the use and disposition of all real and personal property purchased wholly or in part with funds furnished by ECOLOGY in the absence of state and federal statutes, regulations, or policies to the contrary, or upon specific instructions with respect thereto in this Agreement.
- e) Personal Property Furnished by ECOLOGY. When ECOLOGY provides personal property directly to the RECIPIENT for use in performance of the project, it shall be returned to ECOLOGY prior to final payment by ECOLOGY. If said property is lost, stolen, or damaged while in the RECIPIENT's possession, then ECOLOGY shall be reimbursed in cash or by setoff by the RECIPIENT for the fair market value of such property.
- f) Acquisition Projects. The following provisions shall apply if the project covered by this Agreement includes funds for the acquisition of land or facilities:
 - 1. RECIPIENT shall establish that the cost is fair value and reasonable prior to disbursement of funds provided for in this Agreement.
 - 2. RECIPIENT shall provide satisfactory evidence of title or ability to acquire title for each parcel prior to disbursement of funds provided by this Agreement. Such evidence may include title insurance policies, Torrens certificates, or abstracts, and attorney's opinions establishing that the land is free from any impediment, lien, or claim which would impair the uses intended by this Agreement.
- g) Conversions. Regardless of the Agreement expiration date, the RECIPIENT shall not at any time convert any equipment, property, or facility acquired or developed under this Agreement to uses other than those for which assistance was originally approved without prior written approval of ECOLOGY. Such approval may be conditioned upon payment to ECOLOGY of that portion of the proceeds of the sale, lease, or other conversion or encumbrance which monies granted pursuant to this Agreement bear to the total acquisition, purchase, or construction costs of such property.

Agreement No: OCBASRP-2527-ThurCD-00060
Project Title: Scatter Creek RM 0-6.6 Project Initialization
Recipient Name: Thurston Conservation District

22. RECORDS, AUDITS, AND INSPECTIONS

RECIPIENT shall maintain complete program and financial records relating to this Agreement, including any engineering documentation and field inspection reports of all construction work accomplished.

All records shall:

- a) Be kept in a manner which provides an audit trail for all expenditures.
- b) Be kept in a common file to facilitate audits and inspections.
- c) Clearly indicate total receipts and expenditures related to this Agreement.
- d) Be open for audit or inspection by ECOLOGY, or by any duly authorized audit representative of the State of Washington, for a period of at least three (3) years after the final grant payment or loan repayment, or any dispute resolution hereunder.

RECIPIENT shall provide clarification and make necessary adjustments if any audits or inspections identify discrepancies in the records.

ECOLOGY reserves the right to audit, or have a designated third party audit, applicable records to ensure that the state has been properly invoiced. Any remedies and penalties allowed by law to recover monies determined owed will be enforced. Repetitive instances of incorrect invoicing or inadequate records may be considered cause for termination.

All work performed under this Agreement and any property and equipment purchased shall be made available to ECOLOGY and to any authorized state, federal or local representative for inspection at any time during the course of this Agreement and for at least three (3) years following grant or loan termination or dispute resolution hereunder.

RECIPIENT shall provide right of access to ECOLOGY, or any other authorized representative, at all reasonable times, in order to monitor and evaluate performance, compliance, and any other conditions under this Agreement.

23. RECOVERY OF FUNDS

The right of the RECIPIENT to retain monies received as reimbursement payments is contingent upon satisfactory performance of this Agreement and completion of the work described in the Scope of Work.

All payments to the RECIPIENT are subject to approval and audit by ECOLOGY, and any unauthorized expenditure(s) or unallowable cost charged to this Agreement shall be refunded to ECOLOGY by the RECIPIENT. RECIPIENT shall refund to ECOLOGY the full amount of any erroneous payment or overpayment under this Agreement.

RECIPIENT shall refund by check payable to ECOLOGY the amount of any such reduction of payments or repayments within thirty (30) days of a written notice. Interest will accrue at the rate of twelve percent (12%) per year from the time ECOLOGY demands repayment of funds.

Any property acquired under this Agreement, at the option of ECOLOGY, may become ECOLOGY's property and the RECIPIENT's liability to repay monies will be reduced by an amount reflecting the fair value of such property.

24. SEVERABILITY

If any provision of this Agreement or any provision of any document incorporated by reference shall be held invalid, such invalidity shall not affect the other provisions of this Agreement which can be given effect without the invalid provision, and to this end the provisions of this Agreement are declared to be severable.

25. STATE ENVIRONMENTAL POLICY ACT (SEPA)

RECIPIENT must demonstrate to ECOLOGY's satisfaction that compliance with the requirements of the State Environmental Policy Act (Chapter 43.21C RCW and Chapter 197-11 WAC) have been or will be met. Any reimbursements are subject to this provision.

26. SUSPENSION

Agreement No: OCBASRP-2527-ThurCD-00060
Project Title: Scatter Creek RM 0-6.6 Project Initialization
Recipient Name: Thurston Conservation District

When in the best interest of ECOLOGY, ECOLOGY may at any time, and without cause, suspend this Agreement or any portion thereof for a temporary period by written notice from ECOLOGY to the RECIPIENT. RECIPIENT shall resume performance on the next business day following the suspension period unless another day is specified by ECOLOGY.

27. SUSTAINABLE PRACTICES

In order to sustain Washington's natural resources and ecosystems, the RECIPIENT is fully encouraged to implement sustainable practices and to purchase environmentally preferable products under this Agreement.

a) Sustainable practices may include such activities as: use of clean energy, use of double-sided printing, hosting low impact meetings, and setting up recycling and composting programs.

b) Purchasing may include such items as: sustainably produced products and services, EPEAT registered computers and imaging equipment, independently certified green cleaning products, remanufactured toner cartridges, products with reduced packaging, office products that are refillable, rechargeable, and recyclable, 100% post-consumer recycled paper, and toxic free products.

For more suggestions visit ECOLOGY's web page, Green Purchasing,

<https://ecology.wa.gov/Regulations-Permits/Guidance-technical-assistance/Sustainable-purchasing>.

28. TERMINATION

a) For Cause

ECOLOGY may terminate for cause this Agreement with a seven (7) calendar days prior written notification to the RECIPIENT, at the sole discretion of ECOLOGY, for failing to perform an Agreement requirement or for a material breach of any term or condition. If this Agreement is so terminated, the parties shall be liable only for performance rendered or costs incurred in accordance with the terms of this Agreement prior to the effective date of termination. Failure to Commence Work. ECOLOGY reserves the right to terminate this Agreement if RECIPIENT fails to commence work on the project funded within four (4) months after the effective date of this Agreement, or by any date mutually agreed upon in writing for commencement of work, or the time period defined within the Scope of Work.

Non-Performance. The obligation of ECOLOGY to the RECIPIENT is contingent upon satisfactory performance by the RECIPIENT of all of its obligations under this Agreement. In the event the RECIPIENT unjustifiably fails, in the opinion of ECOLOGY, to perform any obligation required of it by this Agreement, ECOLOGY may refuse to pay any further funds, terminate in whole or in part this Agreement, and exercise any other rights under this Agreement.

Despite the above, the RECIPIENT shall not be relieved of any liability to ECOLOGY for damages sustained by ECOLOGY and the State of Washington because of any breach of this Agreement by the RECIPIENT. ECOLOGY may withhold payments for the purpose of setoff until such time as the exact amount of damages due ECOLOGY from the RECIPIENT is determined.

b) For Convenience

ECOLOGY may terminate for convenience this Agreement, in whole or in part, for any reason when it is the best interest of ECOLOGY, with a thirty (30) calendar days prior written notification to the RECIPIENT, except as noted below. If this Agreement is so terminated, the parties shall be liable only for performance rendered or costs incurred in accordance with the terms of this Agreement prior to the effective date of termination.

Non-Allocation of Funds. ECOLOGY's ability to make payments is contingent on availability of funding. In the event funding from state, federal or other sources is withdrawn, reduced, or limited in any way after the effective date and prior to the completion or expiration date of this Agreement, ECOLOGY, at its sole discretion, may elect to terminate the Agreement, in whole or part, or renegotiate the Agreement, subject to new funding limitations or conditions. ECOLOGY may also elect to suspend performance of the Agreement until ECOLOGY determines the

Agreement No: OCBASRP-2527-ThurCD-00060
Project Title: Scatter Creek RM 0-6.6 Project Initialization
Recipient Name: Thurston Conservation District

funding insufficiency is resolved. ECOLOGY may exercise any of these options with no notification or restrictions, although ECOLOGY will make a reasonable attempt to provide notice.

In the event of termination or suspension, ECOLOGY will reimburse eligible costs incurred by the RECIPIENT through the effective date of termination or suspension. Reimbursed costs must be agreed to by ECOLOGY and the RECIPIENT. In no event shall ECOLOGY's reimbursement exceed ECOLOGY's total responsibility under the Agreement and any amendments.

If payments have been discontinued by ECOLOGY due to unavailable funds, the RECIPIENT shall not be obligated to repay monies which had been paid to the RECIPIENT prior to such termination.

RECIPIENT's obligation to continue or complete the work described in this Agreement shall be contingent upon availability of funds by the RECIPIENT's governing body.

c) By Mutual Agreement

ECOLOGY and the RECIPIENT may terminate this Agreement, in whole or in part, at any time, by mutual written agreement.

d) In Event of Termination

All finished or unfinished documents, data studies, surveys, drawings, maps, models, photographs, reports or other materials prepared by the RECIPIENT under this Agreement, at the option of ECOLOGY, will become property of ECOLOGY and the RECIPIENT shall be entitled to receive just and equitable compensation for any satisfactory work completed on such documents and other materials.

Nothing contained herein shall preclude ECOLOGY from demanding repayment of all funds paid to the RECIPIENT in accordance with Recovery of Funds, identified herein.

29. THIRD PARTY BENEFICIARY

RECIPIENT shall ensure that in all subcontracts entered into by the RECIPIENT pursuant to this Agreement, the state of Washington is named as an express third party beneficiary of such subcontracts with full rights as such.

30. WAIVER

Waiver of a default or breach of any provision of this Agreement is not a waiver of any subsequent default or breach, and will not be construed as a modification of the terms of this Agreement unless stated as such in writing by the authorized representative of ECOLOGY.

End of General Terms and Conditions



BOARD MEETING ITEM SUMMARY SHEET

Agenda Item Title: FY26-27 Wolf Water Resource Vendor Agreement	
Lead Staff: Joey Burgess	Board Meeting Date: 03/25/26
Goal of Presentation:	<input checked="" type="checkbox"/> Decision <input type="checkbox"/> Information <input type="checkbox"/> Feedback
Description/Background:	<i>Please provide a description or background of the project.</i>
<p>Thurston Conservation District (TCD) has identified an unconstrained opportunity for floodplain reconnection, riparian restoration, and enhancement of in-stream habitat on Thompson Creek, a tributary to the Skookumchuck River. The creek faces decades of degradation from industrial timber, historic agricultural and land-use practices (i.e. grazing and mowing), removal of the riparian corridor, and inhibiting large woody debris inputs. These impacts, which are common in the Skookumchuck basin, have culminated in an incised and simplified creek with a disconnected floodplain dominated by invasive vegetation. Restoration will aim to reverse degradation by restoring hydro-geomorphic processes that put the creek, floodplain, and riparian corridor on a recovery trajectory. The rural and undeveloped character of the project site provides an ideal opportunity to explore valley-wide floodplain reconnection that maximizes the quantity and quality of aquatic habitat, enhances groundwater recharge and water storage, and expands riparian and wetland habitats.</p>	
Pros: Huge opportunity restore a section of Thompson Creek, a tributary to the Skookumchuck River, where 10 miles of Coho, Steelhead, and other salmonid habitat has been opened up by a county culvert replacement that was just built in 2025, immediately downstream from this location.	Cons: The costs to design the project are expensive, and do not yet include construction.
Fiscal Impacts: <i>Please describe the costs associated with this action.</i>	
The costs are explained in detail in the Scope of Work attached in the contract. \$170,000 covers the consultant's costs of initial data collection, conceptual design, preliminary design, final design, and all associated permits to bring the project to the construction phase.	
Recommended Action:	<i>What decision do you recommend the board make?</i>
I recommend approving this contract so work can begin in April.	
Legal Review:	<input type="checkbox"/> Yes <input checked="" type="checkbox"/> No <input type="checkbox"/> Not Required
Supporting Documents: <i>Please list below and attach supporting documents (contracts, maps, agreements, draft resolution or other documents).</i>	
<ul style="list-style-type: none"> -The original RFQ that was sent out to contractors. -The proposal that was sent by the winning contractor. -The contract that is being submitted for approval. 	



Thurston Conservation District

582 Tilley Court SE, Suite 152
Tumwater, WA 98501
(360) 754-3588



CONSULTANT SERVICES CONTRACT

Thompson Creek at RM3.5 Habitat Design Project

Professional Services Contract 2026-04

THIS AGREEMENT is between the THURSTON CONSERVATION DISTRICT, a conservation district created under Chapter 89.08 of the Laws of the State of Washington (the "District"), and **Wolf Water Resources**, (the "Consultant").

Lucas Evans
Project Manager/Lead Engineer
Wolf Water Resources
1001 SE Water Ave, Suite 180
Portland, OR 97214
503.207.6688

The parties agree as follows:

1. **Term of Agreement**. This Agreement shall be effective from and after **April 01, 2026**, through **November 15, 2027**, unless terminated earlier pursuant to the provisions of this Agreement.
2. **Scope of Work to be Performed**. The Consultant shall perform the work and services described in Exhibit A. If specified in Exhibit A, the work and services shall be performed pursuant to task orders issued by the District. In the event of a conflict between Exhibit A and this Agreement, the provisions of this Agreement shall prevail.
3. **Compensation and Payment**.
 - A. **Compensation**. The District shall pay the Consultant for all completed work and services as provided in Exhibit A. The total amount paid under this Agreement shall not exceed **One hundred and sixty-nine thousand, seven hundred and eighty-three dollars and zero cents (\$169,783.00)** unless mutually agreed upon in writing by the parties. Expenses incurred due to travel for the project may not exceed Washington State Per Diem Rates, or limits otherwise defined by the grant agency supporting the work.
 - B. **Payment**. The Consultant shall submit to the District at the end of each month an itemized billing statement that identifies in detail, to the reasonable satisfaction of the District, the days and hours worked and which describes the work or services performed. The District will pay the Consultant for work or services performed within 30 days after receipt of an itemized billing statement, in accordance with established practices. The Consultant will provide the District with a Taxpayer Identification Number before or along with the first billing statement submitted to the District.
4. **Record Keeping and Reporting**. The Consultant shall maintain accounts and records, including personnel, property, financial and programmatic records, which sufficiently and properly reflect all direct and indirect costs of any nature expended and work or services performed under this Agreement, and any other records or reports as may be deemed necessary by the District to ensure the performance of this Agreement. These records shall be maintained for

a period of six (6) years after termination of this Agreement, unless permission to destroy such records is granted by the Washington State Archives in accordance with RCW 40.14.070 and the District.

5. Audit. The Consultant shall permit the District, from time to time as the District deems necessary (including after the expiration or termination of this Agreement), to inspect and audit at all reasonable times in Thurston County, Washington, or at such other reasonable location as the District selects, all pertinent books and records of the Consultant to verify the accuracy of accounting records. The Consultant shall supply the District with, or shall permit the District to make, a copy of any books and records upon the District's request. The Consultant shall ensure that the inspection, audit, and copying right of the District is a condition of any subcontract, agreement or other arrangement under which any other person or entity is permitted to perform work and services under this Agreement.

6. Compliance with Law.

A. General Requirement. The Consultant, at the Consultant's sole cost and expense, shall perform and comply with all applicable Federal, State, County, and City laws and ordinances. To the extent such laws apply to the performance of Contractor's professional services, Contractor shall comply to the extent required by the standard of care.

B. Discrimination. Consultant agrees not to discriminate against any employee or applicant for employment or any other person in the performance of this Agreement because of race, creed, color, national origin, marital status, sex, age, disability, or other circumstance prohibited by federal, state or local law or ordinance, except for a bona fide occupational qualification.

C. Licenses and Similar Authorizations. The Consultant, at no expense to the District, shall secure and maintain in full force and effect during the term of this Agreement all required licenses, permits, and similar legal authorizations.

D. Taxes. The Consultant shall pay, before delinquency, all taxes, levies, and assessments arising from the Consultant's activities and undertakings under this Agreement; taxes levied on the Consultant's property, equipment, and improvements; and taxes on the Consultant's interest in this Agreement and any leasehold interest deemed to have been created by this Agreement under RCW Chapter 82.29A.

7. Contractual Relationship.

A. Independent Contractor. The Consultant and District agree that the Consultant is an independent contractor with respect to work or services provided under this Agreement. Nothing in this Agreement shall be considered to create the relationship of employer and employee between the Consultant and the District. It is understood and agreed that the Consultant or any employee of the Consultant will not be entitled to receive any other

benefits accorded District employees. The District will not be responsible for withholding or otherwise deducting federal income tax, social security, or contributing to the State Industrial Insurance Program, or in any other way assuming the duties of an employer with respect to the Consultant or any employee of the Consultant.

- B. Lack of Authority. This Agreement does not constitute the Consultant as the agent or legal representative of the District for any purpose. The Consultant is not granted any express or implied right or authority to assume or create any obligation or responsibility on behalf of or in the name of the District or to bind the District in any manner.
8. No Subcontracting or Assignment. The Consultant shall not subcontract or assign any portion of the work or services covered by this Agreement without the prior written approval of the District. In the event of approval, the Consultant is responsible for any subcontractor's or sub consultant's compliance with all the terms of this contract.
9. Indemnification and Limitation of Remedies.
- A. By Consultant. The Consultant shall indemnify and hold the District, its officers, officials, employees, and volunteers harmless from claims, injuries, damages, losses, or suits including reasonable attorney fees, to the extent caused by Consultant's negligence. In the event of liability caused by or resulting from the concurrent negligence of the Consultant and the District, its officers, officials, employees, and volunteers, the Consultant's liability hereunder shall be only to the extent of the Consultant's sole negligence. It is further specifically and expressly understood that the indemnification provided herein constitutes the Consultant's waiver of immunity under Industrial Insurance, Title 51 RCW, solely for the purposes of this indemnification. This waiver has been mutually negotiated by the parties. The provisions of this section shall survive the expiration or termination of this Agreement.
 - B. By District. The District shall indemnify and hold the Consultant, its officers, officials, employees, and volunteers harmless from claims, injuries, damages, losses, or suits including reasonable attorney fees, to the extent caused by District's negligence. In the event of liability caused by or resulting from the concurrent negligence of the Consultant and the District, its officers, officials, employees, and volunteers, the District's liability hereunder shall be only to the extent of the District's sole negligence. It is further specifically and expressly understood that the indemnification provided herein constitutes the District's waiver of immunity under Industrial Insurance, Title 51 RCW, solely for the purposes of this indemnification. This waiver has been mutually negotiated by the parties. The provisions of this section shall survive the expiration or termination of this Agreement.
 - C. Limitation of Remedies. Contractor's aggregate liability responsibility to the District,

including that of Contractor's officers, directors, employees, and agents is limited to \$1,000,000 or the amount of Contractor's fee under this Agreement, whichever is greater. This limitation of remedy applies to all lawsuits, claims, or actions, whether identified as arising in tort, contract, or other legal theory, (including without limitation, Contractor's indemnity obligations in the previous paragraph) related to Contractor's services under this Agreement.

10. Insurance.

The Consultant shall maintain for the duration of the Agreement and with a two-year tail, such insurance for claims for injuries to persons or damage to property which may arise from or in connection with insurable loss related to or arising from the work hereunder by the Consultant, its agents, representatives, or employees, including any injury or loss as a result of negligence. This clause is not meant to require any warranty of work or builder's risk insurance.

No Limitation. Consultant's maintenance of insurance as required by the agreement shall not be construed to limit the liability of the Consultant to the coverage provided by such insurance, or otherwise limit the District's recourse to any remedy available at law or in equity. The Consultant's insurance shall include contractual liability coverage and additional insured coverage for the benefit of the District and anyone else the District is required to name, and shall specifically include coverage for ongoing and completed operations.

A. Minimum Scope of Insurance

Consultant shall obtain insurance of the types described below:

1. Automobile Liability insurance covering all owned, non-owned, hired, and leased vehicles. Coverage shall be written on Insurance Services Office (ISO) form CA 00 01 or a substitute form providing equivalent liability coverage. If necessary, the policy shall be endorsed to provide contractual liability coverage.
2. Commercial General Liability insurance shall be written on ISO occurrence form CG 00 01 and shall cover liability arising from premises, operations, independent contractors, and personal injury and advertising injury. The Consultant's insurance shall include additional insured coverage for the benefit of the District and anyone else the District is required to name, with respect to the work performed for the District.
3. Workers' Compensation coverage as required by the Industrial Insurance laws of the state of Washington.
4. Professional Liability insurance appropriate to the Consultant's profession.

B. Minimum Amounts of Insurance

Consultant shall maintain the following insurance limits:

1. Automobile Liability insurance with a minimum combined single limit for bodily injury and property damage of \$1,000,000 per accident.
2. Commercial General Liability insurance shall be written with limits no less than \$1,000,000 each occurrence, \$2,000,000 general aggregate.
3. Professional Liability insurance shall be written with limits no less than \$1,000,000 per claim and \$1,000,000 policy aggregate limit.
4. The consultant is required to provide a certificate of coverage additionally insuring Thurston Conservation District for all work conducted by or resulting from the work of the consultant.

C. Other Insurance Provisions

The insurance policies are to contain, or be endorsed to contain, the following provisions for Automobile Liability, Professional Liability, and Commercial General Liability insurance:

1. The insurance required to be carried by the Consultant shall be PRIMARY AND NON-CONTRIBUTORY. With respect to each type of insurance specified hereunder, the District's insurances shall be excess to Consultant's insurance.
2. The Consultant's insurance coverage shall be PRIMARY AND NON-CONTRIBUTORY insurance with respect to the District and any other entity the District is required to indemnify and hold harmless. Any insurance, self-insurance, or insurance pool coverage maintained by the District shall be excess of the Consultant's insurance and shall not contribute with it.
3. The Consultant's insurance shall be endorsed to state that coverage shall not be cancelled by either party, except after thirty (30) days prior written notice by certified mail, return receipt requested, has been given to the District.

D. Acceptability of Insurers

Insurance is to be placed with insurers with a current A.M. Best rating of not less than A:VII.

E. Verification of Coverage

Consultant shall furnish the District with original certificates and a copy of the amendatory endorsements, including but not necessarily limited to the additional insured

endorsement, evidencing the insurance requirements of the Consultant before commencement of the work.

Before commencing work and services under this Agreement, the Consultant shall provide to the person identified in Section 12 a Certificate of Insurance evidencing the insurance described above. The District reserves the right to request and receive a certified copy of all required insurance policies.

F. Subcontractors' Insurance

Contractor shall ensure that each subcontractor of every tier obtains at a minimum the same insurance coverage and limits as stated herein for the Contractor. Upon request from the District, the Contractor shall provide evidence of such insurance

11. Ownership of Documents. Reports, studies, plans, drawings, maps, models, specifications, computer files and other work products produced by the Consultant, except for working notes and internal documents, shall be the property of the District, which are subject to public disclosure under Chapter 42.56 RCW. The Consultant shall furnish these documents to the District upon request. The Consultant shall refer all third party requests for inspection and copying of these documents to the District which shall determine whether the documents shall be made available for inspection in accordance with Chapter 42.56 RCW. Modification or re-use of any of these documents by the District following completion of the work and services under this Agreement, without the written permission of the Consultant, shall be at the District's sole risk.

- A. Pursuant to performing the Specified Services, Consultant will create certain instruments of service, which may take the form of printed, hard copy documents and electronic, computer-ready materials including but not limited to computer programs, software, and data. These instruments may also take the form of methodology, processes, and logic.
- B. Materials, methodologies, processes, and logic will be delivered to District as part of the Specific Services rendered by Consultant, and District will acknowledge said materials as instruments of service. All instruments shall become the property of District upon completion of the respective Specific Service and payment in full of monies due Consultant for that service.
- C. Consultant makes no warranties, expressed or implied, of the merchantability or fitness of said instruments for any particular purpose other than the pertinent scope of the Specified Services.
- D. Consultant may retain reproducible copies of its instruments of service (aka "documents" per TCD).

12. Addresses for Notices and Deliverable Materials. All notices and other material to be delivered under this Agreement shall be in writing and shall be delivered or mailed to the following addresses, unless otherwise requested by the Thurston Conservation District:

**Thurston Conservation District
582 Tilley Court, Suite 152
Tumwater, WA 98501
(360) 754-3588**

or such other addresses as either party may, from time to time, designate in writing.

13. Amendments. No modification or amendment of this Agreement shall be effective unless in writing and signed by authorized representatives of the parties. The parties expressly reserve the right to modify this Agreement, from time to time, by mutual agreement.
14. Binding Effect. The provisions, covenants and conditions in this Agreement shall bind the parties, their legal heirs, representatives, successors and assigns.
15. Applicable Law; Venue. This Agreement shall be construed and interpreted in accordance with the laws of the State of Washington. The venue of any action brought under this Agreement shall be in the Superior Court for Thurston County.
16. Remedies Cumulative. Rights under this Agreement are cumulative, and the failure to exercise a right on any occasion shall not operate to forfeit the right on another occasion. The use of one remedy shall not exclude or waive the right to use another.
17. No Waiver. No waiver of full performance by either party shall be construed, or operate, as a waiver of any subsequent default or breach of any of the terms, covenants or conditions of this Agreement. The payment of compensation to the Consultant shall not be deemed a waiver of any right or the acceptance of defective performance.
18. Termination.
- A. At Convenience of District. The District may terminate this Agreement at any time upon 10 days written notice to the Consultant.
 - B. For Cause. Either party may terminate this Agreement where the other party fails to perform its obligations and the failure has not been corrected in a timely manner after notice of breach.
 - C. For Reasons Beyond Control of Parties. Either party may terminate this Agreement without recourse by the other party where performance is rendered impossible or impracticable for reasons beyond the party's reasonable control such as, but not limited

to, acts of nature; war or warlike operations; civil commotion; riot; labor disputes including strike, walkout, or lockout; sabotage; or superior governmental regulation or control.

D. Compensation in the Event of Termination. In the event of termination of the Contract pursuant to this Section, District shall pay Contractor the lower of the actual price or the price shown on any schedule of values for all Work completed up to the date of such termination for which Contractor has not been paid incurred by it in the performance of the Work, plus all the pro-rated portion of any fee included in Contractor's price based on the portion of the non-fee price to be paid under this paragraph.

E. Notice. Notice of termination pursuant to Subsections B and C above shall be given by the party terminating this Agreement to the other not less than 30 days prior to the effective date of termination.

19. Previous Agreements Superseded. The terms and conditions of this Agreement supersede the terms, obligations and conditions of any existing or prior agreement between the parties regarding the subject matter of this Agreement.

21. Headings. Headings of paragraphs and section herein are for reference purposes only and are not intended to create or imply any contract terms or understandings different from or supplemental to those created by the substantive terms as written.

20. Entire Agreement. This Agreement is all of the covenants, promises, agreements and conditions, either oral or written, between the parties.

Thompson Creek at RM3.5 Habitat Design
Professional Services Contract #2026-04

CONSULTANT

THURSTON CONSERVATION DISTRICT

By _____
Owner/Principal, Wolf Water Resources

By _____
Board of Supervisors, Chair

Date: _____

Date: _____

Exhibit A
Scope of Work

Thompson Creek at RM3.5 Habitat Design
Professional Services Contract 2026-04

This Page Intentionally Left Blank

Thompson Creek at RM3.5 Habitat Design

April 01, 2026 through November 15, 2027

Purpose

The focus area for Thompson Creek at RM3.5 Habitat Design (#2026-04) is river mile 3.5 on Thompson Creek, a tributary to the Skookumchuck River in south Thurston County, WA on this privately owned parcel: 22306 Thomson Creek Rd, Tenino, Wa (Parcel #21519340000)

In order to support Coho and Winter Steelhead habitat on Thompson Creek, Wolf Water Resources will work with TCD staff to identify and prioritize a suite of restoration actions for the focus area and create final project plans for the site. Work will include both remote and on-the-ground feasibility assessment for conceptual project elements, preliminary design, permitting, and final design. Site potential will be assessed to address key priorities for the project: flood plain reconnection/water storage opportunities and aquatic species habitat restoration, including in-stream strategies.

The design elements will be developed collaboratively with TCD, landowner, and Wolf Water Resources. The project aims to meet aquatic habitat restoration goals within the restoration framework provided by the Salmon Recovery Funding Board (SRFB) for the Skookumchuck River and its tributaries.

SCOPE OF WORK AND BUDGET:

Project Description

Thurston Conservation District (TCD) has identified an unconstrained opportunity for floodplain reconnection, riparian restoration, and enhancement of in-stream habitat on Thompson Creek, a tributary to the Skookumchuck River. The creek faces decades of degradation from industrial timber, historic agricultural and land-use practices (i.e. grazing and mowing), removal of the riparian corridor, and inhibiting large woody debris inputs. These impacts, which are common in the Skookumchuck basin, have culminated in an incised and simplified creek with a disconnected floodplain dominated by invasive vegetation. Restoration will aim to reverse degradation by restoring hydro-geomorphic processes that put the creek, floodplain, and riparian corridor on a recovery trajectory. The rural and undeveloped character of the project site provides an ideal opportunity to explore valley-wide floodplain reconnection that maximizes the quantity and quality of aquatic habitat, enhances groundwater recharge and water storage, and expands riparian and wetland habitats.

This scope of work covers all data collection, analysis, design and permitting to advance the Thompson Creek Restoration at river mile 3.5 from conceptual to final designs. The prominent project tasks include topographic survey and baseline data collection, hydrology and hydraulic modeling, conceptual designs and alternatives analysis, and advancement of the concept through design and permitting. We anticipate developing two phases of design at preliminary (60%) level and final (90-100%) level drawings. Permitting is largely led by W2r with support from TCD

including federal, state and local permits.

Scope and Deliverables

Task 1. Project Management, Administration, and Project Partner Meetings

Coordinate project activities with TCD staff and project stakeholders and perform administrative services necessary for completion of project. Includes monthly check-in meetings with TCD and three meetings with a broader team of stakeholders at key design phases including conceptual design, preliminary and final. We assume that the conceptual design meeting will be held in-person.

Budget: \$15,330

Deliverables: Monthly invoices with progress reports, meeting notes.

TCD Role:

Attend monthly meetings and coordinate with project partners and landowners for broader design phase meetings.

Assumptions:

Meetings will be held remotely except for one in-person meeting during the conceptual design phase that will be held on-site or at the TCD office.

Task 2. Topographic Survey, Baseline Data Collection, and Geomorphic Assessment

W2r will conduct an interdisciplinary field and desktop-based assessment of baseline conditions to contextualize our understanding of Thompson Creek and to develop a database necessary for design. This task will include topographic survey, geomorphic assessments and baseline data collection described herein:

- 1) **Topography and bathymetry:** W2r will complete a 1-day survey with RTK-GPS equipment that will include dense transects along Thompson Creek for full bathymetric coverage and a targeted topographic survey within the floodplain to ground-truth RCG-dominated areas. Survey data will be incorporated with LiDAR to create a digital elevation model (DEM) mosaic. This DEM will serve as a baseline for design, modeling and assessments.
- 2) **Geomorphic Assessment:** The project reach will be assessed to understand geomorphic processes and their trends. This information is critical to identifying site-specific restoration treatments and understanding the spatial and temporal scales over which they will provide resilience to the intended biophysical targets. We will characterize the following during the field visit and desktop analyses:
 - a. Sub-reach delineation of the mainstem, floodplain, and wetland based on dominant hydro-geo-morphic attributes to provide a basis for treatment types considered during the alternatives analysis.
 - b. River channel, floodplain, and wetland morphologies (widths, slopes, natural vs. anthropogenic confining features, topographic variability, active deposition and erosion areas, lateral migration, soil types, and relic channel and ditch features). This task will include developing a relative elevation model (REM) map. A preliminary REM has been developed for this proposal, see page 4.
 - c. Stream evolution stage (existing and likely trajectory).
- 3) **Baseline Data Collection:** W2r will complete a desktop-based assessment to compile relevant geospatial datasets including WDFW spawner surveys, hydrology studies from

the downstream Thurston County bridge replacement, water quality, and limiting factors for target species. The desktop-based assessment will be coupled with a rapid field-based ecological assessment that will supplement vegetation, hydrology and soil data collected during the wetland determination.

Budget: \$18,326

Schedule: April-May 2026

Deliverables:

- Processed survey data (.csv or .shp) and refined digital elevation model (.tif)
- Geomorphic reach-map.
- Relative elevation model (REM) map.

TCD Role:

Coordinate with W2r on field data collection and site access. Provide background data, reporting and/or other information available from the downstream bridge replacement.

Task 3. Hydrology and Hydraulics

W2r will develop a 2D hydraulic model of the project vicinity using USACE's HEC-RAS modeling platform. The model will utilize the refined DEM produced in Task 2 to ensure modeling results are precise enough to help the project team answer questions about floodplain activation, sediment dynamics, fish and wildlife limiting factors, habitat suitability, and flood risks (as needed). We propose using the hydraulic model to simulate existing conditions, up to two conceptual alternatives, preliminary design and final design. The hydraulic model will also be a necessary tool for floodplain permitting and assessment of changes to flood risk that will likely be required by Thurston County.

There are no known stream gages on Thompson Creek and the most proximally known gage to the project site is located on the Skookumchuck River near Vail at USGS station 12025700. To fill this data gap, W2r will complete a desktop-based assessment of hydrology using regional regression relationships and/or scaling of a nearby gage with similar watershed characteristics. This assessment will develop flood frequency statistics (e.g. the 100-year flood discharge) and flow duration statistics (e.g. the 50% duration or average discharge) to characterize typical flows on Thompson Creek.

Budget: \$22,610

Schedule: May 2026 to May 2027

Deliverables:

- Hydraulic modeling results for existing conditions, two concept alternatives, preliminary design and final design.
- Annual flood frequency statistics and daily flow duration statistics.

Assumptions:

W2r will not model the preferred concept nor any additional alternative refinements other than the two selected options. The hydraulic model will be uncalibrated.

Task 4. Conceptual Design & Alternatives Analysis

W2r will collaborate with TCD and the landowner to develop 2-3 concept alternative designs informed by our collective understanding of site conditions gained during tasks 2 and 3. We understand that TCD and project partners have begun considering restoration actions and have divided the project area into broad sub-reaches. The proposed concept designs will incorporate these elements and other considerations already identified by TCD and agency stakeholders. Concept alternative maps will be developed in ArcGIS Pro and will incorporate/consider the following actions:

- Full valley-reset (stage-zero) for perennial floodplain connectivity (including bed raising and floodplain lowering earthwork).
- Floodplain benching and/or construction of an inset “stage-8” floodplain condition.
- Placement of large woody debris including consideration of channel spanning, marginal and/or island forming log jams.
- Low-tech processed-based restoration (i.e. BDAs, PALS, bioengineering).
- Filling and plugging existing drainage ditches.
- Recreational trail and pedestrian bridge construction.
- Reed canarygrass scraping and treatment of other invasive species.
- Upland prairie (pollinator emphasis) and oak savannah restoration (where appropriate).
- Revegetation and establishment of a riparian corridor and diverse wetland plant communities

W2r will complete a data-driven alternatives analysis that quantifies the concept alternatives ability to address habitat limiting factors identified in the ASRP (ASRPSC, 2019). This assessment will be supported by hydraulic modeling to predict key project metrics that may include in-stream aquatic habitat suitability, floodplain connectivity, and/or water storage. Modeling outcomes will be summarized in a succinct alternative’s matrix or summary table as a rationale for selection of a preferred design.

Budget: \$18,550

Schedule: May-August 2026

Deliverables:

- 2-3 concept alternative maps developed in ArcGIS Pro.
- Preferred alternative design selection.
- Conceptual design report following SRFB’s Manual 18 (Appendix D).
- Alternatives analysis matrix & hydraulic modeling results for 2 restoration alternatives.

Assumptions:

The preferred conceptual design will be advanced to preliminary designs without intermediate map revisions or hydraulic modeling.

Task 5. Preliminary Design

The preliminary design phase represents a significant step in a restoration project’s development as the preferred concept is detailed, rigorously evaluated, and eventually permitted. Feedback from project partners will be incorporated to advance the design, prepare the 60% engineering

plan set, material quantities, construction cost estimate, and basis of design report (BDR). This phase will be supported by hydraulic modeling, grading and sequencing plans, large wood structure stability calculations and an adjacent property risk assessment. Designs will be advanced to a level sufficient for project permitting and meeting preliminary design requirements listed in SRFB's Manual 18.

We assume the design plans will have the following sheets:

1. Cover and Sheet Index
2. Notes and Legend
3. Existing Conditions Site Plan
4. Access, Staging, TESC and Water Management Plan
5. Site Overview & Sheet Index
6. Site Plans (2 sheets, 1:30 scale)
7. Habitat Restoration and WHS Details (2 sheets)
8. Thompson Creek Profile
9. Typical Sections
10. Planting & Seeding Plan
11. Planting Plan Species Tables

Budget: **\$28,927**

Schedule: **September 2026 to January 2027**

Deliverables:

- Preliminary (60%) design drawings and construction cost estimates.
- Preliminary Basis of Design Report satisfying RCO Manual 18 (Appendix D)

Assumptions:

TCD will take a lead role on development of the planting plan species lists and W2r will coordinate with TCD on the zone locations informed by anticipated hydrology.

Task 6. Permitting

Under this task, W2r will complete all necessary applications for state, federal and local permits that are not explicitly led by TCD. W2r will coordinate early with regulatory agencies to establish a clear and efficient permitting pathway for the project. This will include scheduling pre-application meetings with regulators to gather feedback and confirm the most appropriate permitting strategy. Streamlined pathways, including the Fish Habitat Enhancement Project (FHEP) process, will be explored where applicable.

The permitting task has been split into two sub-tasks including: (1) Federal, State and Local Permits and (2) Thurston County floodplain permitting.

5.1 Federal, State and Local Permits

The proposed restoration actions will require permit authorizations under the Clean Water Act and from WDFW. W2r will prepare and submit a Joint Aquatic Resources Permit Application (JARPA) to obtain the necessary approvals, including:

- Clean Water Act Section 401 and Section 404 authorizations
- WDFW Hydraulic Project Approval (HPA)

Section 404 of the Clean Water Act (CWA) requires a permit from the U.S. Army Corps of Engineers (USACE) for the discharge of dredged or fill material into jurisdictional wetlands and Waters of the U.S. (WOTUS). Once project designs progress to preliminary 60% level, a pre-application meeting will be held with USACE to identify a Section 404 permitting pathway, including use of programmatic streamlining permits. The Section 404 authorization will also require compliance with federal cultural and endangered species regulations. W2r will coordinate with TCD to ensure the U.S. Army Corps of Engineers receives the documentation necessary to complete its review under Section 106 of the National Historic Preservation Act and Section 7 of the Endangered Species Act.

W2r will conduct a wetland determination within the project area and will rate wetlands using the WA Wetland Rating System. The wetland determination and wetland ratings will be documented in a technical memorandum sufficient for approval by the Washington Department of Ecology (Ecology). It is assumed that this task will include one virtual meeting with Ecology and coordination to revise and refine the determination. Mapping will be informed by field observations and supplemented with LiDAR, aerial imagery, water level data, and available soils data. Representative data plots and photo documentation will be collected to support boundary determinations.

5.2 Floodplain Permitting

Thompson Creek is mapped as a Zone A special flood hazard area (SFHA) on the FEMA flood insurance rate map (FIRM). Zone A designation requires county review and a floodplain development permit for any “disturbance” including cut and fill within the zone, but it’s our expectation that a formal “no-rise” analysis will not be required. We expect that a rise in base flood elevations (BFEs) up to one foot will be allowable, and rises exceeding one foot may also be permitted, depending on Thurston County’s interpretation of the CFRs.

W2r will complete a flood hazard analysis using the hydraulic model developed in Task 3 to evaluate project flood risks, predict flood levels, and document compliance with Thurston County floodplain permitting requirements. This analysis will include the following:

- Assess flood risks and predict flood levels and estimate Base Flood Elevations (BFEs).
- Certify that existing structures and infrastructure are reasonably safe from flooding and not adversely impacted.
- Prepare a concise technical memo that evaluates and reports potential changes in flood elevations to support Thurston County land use development permit review.
- Conduct a flood storage analysis to meet Thurston County’s higher-than-FEMA floodplain standards (as required).
- Coordinate early with the Thurston County floodplain administrator (Noah Watson) to confirm methodology and interpretation of County code.

Budget: **\$39,930**

Schedule: **February-September 2027**

Deliverables:

- CWA 404 Permit Application.
- CWA Section 401 Water Quality Certification.
- Wetland determination memorandum, maps & ratings using the WA Wetland rating system.

- Flood hazard analysis memorandum & certification of no-adverse flood risks.
- Thurston County Land-Use Permit (covers the floodplain permit).

Assumptions:

- 1) TCD is contracting archaeological investigations outside of this scope and will be the lead for Section 106 of the National Historic Preservation Act.
- 2) The proposed restoration actions align with Nationwide Permit 27 and the SLOPES V Restoration Program; therefore, individual ESA consultation is not required.
- 3) The project will not require a Conditional Letter of Map Revision (CLOMR).
- 4) A wetland determination (rather than delineation) will be sufficient to satisfy Ecology’s regulatory requirements.

Task 7. Final Design

At the final design stage, W2r will advance the preliminary design drawings, construction cost estimates, and basis of design report with sufficient detail for construction bidding and implementation. This phase will also include the development of technical specifications that detail construction requirements, materials, measurement and payment.

We assume the design plans will have the following sheets:

1. Cover and Sheet Index
2. Notes and Legend
3. Existing Conditions Site Plan
4. Access, Staging, TESC and Water Management Plan
5. Site Overview & Sheet Index
6. Site Plans (2 sheets, 1:30 scale)
7. Habitat Restoration and WHS Details (2 sheets)
8. Thompson Creek Profile
9. Typical Sections
10. Planting & Seeding Plan
11. Planting Plan Species Tables

Budget: \$26,110

Schedule: February-May 2027

Deliverables:

- Final (100%) design drawings and construction cost estimates.
- Final (100%) technical specifications.
- Final Basis of Design Report satisfying RCO Manual 18 (Appendix D)

Assumptions:

This task does not include pre-bid support nor project management support related to wood procurement or logistics. These tasks are assumed to be under a future phase of work.

D. Project Schedule

W2r recognizes the project schedule is driven by grant funding deadlines in August/September of 2027 for final design. We expect the project to kick off in April 2026 and close at the end of August 2027 to meet this deadline. It's our understanding that construction implementation is not anticipated until 2028 at the earliest; therefore, we feel that completing all the final project deliverables by the grant deadline will put the project on track without construction or permitting delays. While TCD has indicated that there is flexibility to extend the project schedule through the summer of 2027, preference is given to have final design deliverables earlier if possible. We've developed the following schedule with a target date of May 2027 for final design. This target was selected to avoid the busy summer construction season and give TCD plenty of time to consider next steps with contracting, funding, and wood acquisition. Permitting timelines extend past the May 2027 window to account for responses for additional information or questions during the review process.

Thompson Creek RM 3.5 – Project Schedule

Task	2026												2027											
	A	M	J	J	A	S	O	N	D	J	F	M	A	M	J	J	A	S	O	N	D			
Task 1 - Project Management																								
Invoicing, Coordination & Management																								
Stakeholder Meetings																								
Task 2 - Topographic survey, Baseline Data Collection and Geomorphic Assessment																								
Survey & Geomorphic Assessment Fieldwork																								
Desktop Data Collection																								
Survey Processing and Map Creation																								
Task 3 - Hydrology and Hydraulics																								
Hydrology Analysis																								
Hydraulic Model - Existing Conditions & Concepts																								
Hydraulic Model - Preliminary Design																								
Hydraulic Model - Final Design																								
Task 4 - Conceptual Design & Alternatives Analysis																								
Concept Design Maps																								
Alternatives Analysis																								
Select Preferred Design																								
Task 5 - Preliminary Design																								
Preliminary Design Plans & Costs																								
Preliminary Basis of Design Report																								
Task 6 - Permitting																								
JARPA Development - 404, 401, ESA																								
Floodplain Permit																								
Wetland Determination																								
Task 7 - Final Design																								
Final Design Plans, Costs & Specifications																								
Final Basis of Design Report																								

E. Fee Estimate

W2r recognizes that TCD is constrained by a fixed funding source of \$170,00.00 that drives the level of detail and analysis possible to support Thompson Creek design and permitting. This proposed fee estimate has been refined from previous drafts to meet this limit after coordination with TCD on available budget and priorities. The following fee estimate attempted to prioritize a multi-disciplinary team with multiple perspectives included while ensuring the design is still efficient and streamlined.

	Thompson Creek RM 3.5 Thurston Conservation District	Joe Rudolph Principal Scientist	Lucas Evans Project Engineer	Lauren Zatkos Scientist II	Nora Boylan Sr. Geomorphologist	Heather Clegg ET III	Amanda Bintliff Scientist I	Safiya Lahham Project Administrator	Diedra Case Senior Graphic Specialist	Subtotal Labor Hours Per Task	Subtotal Labor Fee Per Task	Reimbursable Expenses	Total Cost
Task	Task Descriptions	\$210	\$175	\$175	\$175	\$140	\$150	\$140	\$180				
1	Project Management									92	\$15,330	\$0	\$15,330
	Invoicing & Management (18 months)		18					18		36	\$5,670	\$0	\$5,670
	Monthly Check-In Meetings		12							12	\$2,100	\$297	\$2,397
	Remote Stakeholder Meetings (2)	4	8	4	4	8				28	\$4,760	\$0	\$4,760
	In-Person Stakeholder Meeting (1)		8		8					16	\$2,800	\$0	\$2,800
2	Topographic Survey, Baseline Data Collection & Geomorphic Assessment									100	\$16,730	\$1,596	\$18,326
	Topographic Survey		12			12				24	\$3,780	\$852	\$4,632
	Develop DEM & REM		2		4	8				14	\$2,170	\$248	\$2,418
	Baseline Data Review	2	2	2	2	2				10	\$1,750	\$248	\$1,998
	Geomorphic Field & Desktop Assessment	4	2		28					34	\$6,090	\$248	\$6,338
	Basemap Development	2	2		6	8				18	\$2,940	\$0	\$2,940
3	Hydrology & Hydraulics									148	\$22,610	\$0	\$22,610
	Hydrology Analysis		2		8	4				14	\$2,310	\$0	\$2,310
	Hydraulic Model - Existing Conditions		12			24				36	\$5,460	\$0	\$5,460
	Hydraulic Model - Concept Alternatives		16			22				38	\$5,880	\$0	\$5,880
	Hydraulic Model - Preliminary Design		8			22				30	\$4,480	\$0	\$4,480
	Hydraulic Model - Final Design		8			22				30	\$4,480	\$0	\$4,480
4	Conceptual Design & Alternatives Analysis									110	\$18,550	\$0	\$18,550
	Concept Design Maps	2	12	2	6	12				34	\$5,600	\$0	\$5,600
	Alternatives Analysis	2	12	2	8	8				32	\$5,390	\$0	\$5,390
	Conceptual Design Report	4	16	4	12	8				44	\$7,560	\$0	\$7,560
5	Preliminary Design									180	\$28,630	\$297	\$28,927
	Design	2	10			12				24	\$3,850	\$0	\$3,850
	Plan Development	2	34			64				100	\$15,330	\$297	\$15,627
	Construction Cost Estimate	2	4			8				14	\$2,240	\$297	\$2,537
	Preliminary Basis of Design Report	4	16	4	10	8				42	\$7,210	\$0	\$7,210
6	Permitting									238	\$39,930	\$0	\$39,930
	JARPA Development - 404, 401, ESA	4	2	40		8	22			76	\$12,610	\$0	\$12,610
	Floodplain Permit	2	24			16				42	\$6,860	\$0	\$6,860
	Wetland Determination Field & Desktop	4	2	40			22			68	\$11,490	\$0	\$11,490
	WA Wetland Rating System	2	2	40			8			52	\$8,970	\$0	\$8,970
7	Final Design									164	\$26,110	\$0	\$26,110
	Design		14			10				24	\$3,850	\$0	\$3,850
	Plan Development		20			40				60	\$9,100	\$0	\$9,100
	Construction Cost Estimate	2	4			8				14	\$2,240	\$0	\$2,240
	Technical Specifications		24			8				32	\$5,320	\$0	\$5,320
	Final Basis of Design Report	2	16		4	12				34	\$5,600	\$0	\$5,600
Total		46	324	138	100	354	52	18	0	1032	\$167,890	\$1,893	\$169,783

Thurston Conservation District will:

- Coordinate closely with **Wolf Water Resources** to make the most effective use of time and resources and will process invoices in a timely fashion.
- Communicate with the landowner to coordinate site visits and meetings.
- Prepare the planting plan in consultation with **Wolf Water Resources**.

1. Budget: \$169,783.00

2. Deliverables:

A. **Wolf Water Resources** will provide the deliverables outlined in this document.

B. **Wolf Water Resources** will incorporate recognition of EPA funding where appropriate (as required for all media developed in collaboration with the Shore Friendly Thurston Program Manager as part of the project and must contain the following statement):

“This project has been funded wholly or in part by the United States Environmental Protection Agency under assistance agreement PC-01J223-01 Contract #16-05251 through the Washington Department of Fish and Wildlife. The contents of this document do not necessarily reflect the views and policies of the Environmental Protection Agency or the Washington Department of Fish and Wildlife, nor does mention of trade names or commercial products constitute endorsement or recommendation for use.”

C. **Wolf Water Resources** will submit vouchers/invoices for completed services on a monthly TBD basis. Invoices for completed tasks (please list hours per task) must be received by TCD prior to the last day of the month in order to assure payment in a timely fashion.

D. In addition to evidence of insurance coverage required as described in Section 10, the consultant is required to provide a certificate of coverage additionally ensuring Thurston Conservation District for all work conducted by or resulting from the work of the consultant.



March 6, 2026

Proposal for Thurston Conservation District

Thompson Creek at RM3.5 Habitat Design



WORKING WITH NATURE, PARTNERING WITH PEOPLE



Contact

Lucas Evans

LEvans@wolfwaterresources.com

Wolf Water Resources, Inc.

1001 SE Water Ave, Ste 180

Portland, OR 97214

503.207.6688

Reverse side, cover page

CONTENTS

Qualifications & Relevant Experience	1
Past Project Experience	5
Methodology and Background	8
Schedule	13



Reverse side, table of contents

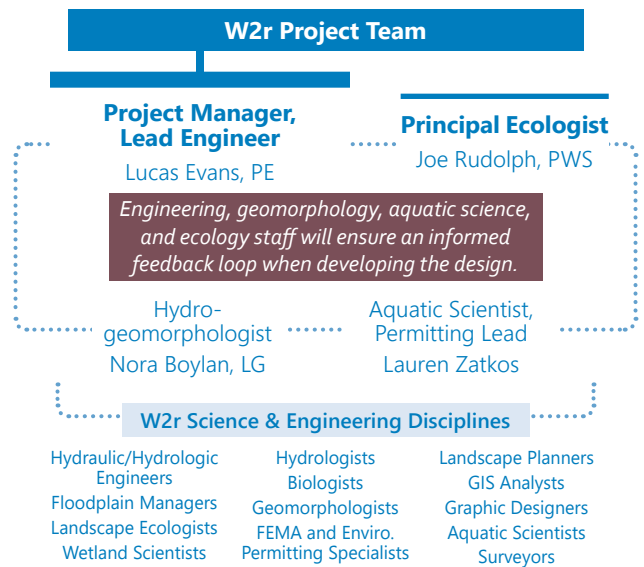
A Qualifications & Relevant Experience

Technical Advantages + Skilled Perspectives

Connected by a passion for aquatic ecosystem uplift, Wolf Water Resources (W2r) specializes in watershed science and river systems engineering to create landscape resiliency for fish, wildlife, and people. Our integrated team of 35 restoration engineers, geomorphologists, and scientists work shoulder to shoulder, out of the same office, synthesizing the bigger landscape picture and its biophysical processes. And, because it is at our core to work in an integrated manner, that is how we engage with our clients: by listening and learning from each others' perspectives. We emphasize clear communication and distillation of technical information to demystify river behavior so client-landowner teams can make use of technical insights and co-develop project solutions with us.

Our team members have worked within many river systems in western Washington, including in Thurston County, seeing first hand how restoration projects can benefit native fisheries and kick start the development of thriving ecosystems. And, as a firm exclusively focused on aquatic habitat uplift, we offer well-honed perspectives and methods for the analyses and design of restoration projects. Our projects utilize a variety of design measures, including beaver dam analogs (BDAs), post assisted log structures (PALS), engineered log jams (ELJs), and strategic placement of loose wood, depending on project goals, opportunities, and constraints. Much of our project work is funded by the Salmon Recovery Funding Board (SRFB) and is designed to meet the requirements of Manual 18, and we are up to speed on FEMA requirements and how to tailor restoration designs to meet no-rise conditions.

On this project, we will recognize processes in the broader system affecting limiting factors along Thompson Creek and we will consider the merits and functions of different restoration measures (e.g., magnitude/extents of uplift, rate of response, and geomorphic trajectory). All in all, we are ready to work side by side with you throughout the project to help it proceed as smoothly as possible.



W2r prioritizes seeking client input during the design process, not afterward when the report and planset are due. We walk the site with our clients and seek their input along the way to ensure our ideas and methods will work for their needs.

(At right, Project Manger Lucas Evans on site with our client on the Upper Deschutes River project.)

SUPPORTING YOUR RESTORATION VISION



Project Manager, Lead Engineer

Lucas Evans, PE



Professional Engineer, WA, OR; BS Ecological Engineering, BS Sustainability, Minor in Soil Science. 8 years of experience.

Experience with SRFB Manual 18

- Upper Deschutes River Planning and Design
- SF Toutle River Headwaters Design
- SF Toutle River Brownell Reach
- Deschutes RM 21 and 34.5
- Lower Deschutes River and Elwanger Creek

Lucas has developed hydraulic models to support design and floodplain permitting throughout Oregon and Washington. This includes ten successful floodplain permit applications in over five counties.



- No rise
- CLOMR/LOMR
- Flood risk analysis

Lucas brings a holistic understanding of floodplain and river processes along with on-the-ground experience implementing floodplain reconnection (Stage 0/8) and wood implementation projects, including ELJs and low-tech wood loading to restore hydro-geomorphic processes necessary for in-stream, riparian, and wetland habitat complexity. In western Washington, Lucas has recently managed and designed multiple reach-scale wood loading and ELJ design projects in relatively undeveloped rivers that allow for bold and scaled-up implementation. This versatile design experience, along with his well-versed understanding of floodplain permitting regulations (Thurston County, National Flood Insurance Program, FEMA Region 10) will ensure restoration objectives on the Thompson Creek project are not sacrificed because of permitting constraints. Lucas brings current knowledge of Thurston County floodplain ordinances and floodplain administrators from work on the Upper Deschutes project ensuring that the permitting process will be completed seamlessly.

PROJECTS IN THURSTON COUNTY:

- Managed and led all design phases and the construction implementation strategy for the **Upper Deschutes Restoration Design (SPSSEG)** project, currently in final design. Modeling and wood stability analyses and expertise in floodplain permitting built efficiency into the permitting task and provided an important avenue toward ensuring preferred restoration approaches could be maintained. Collaborated with Nora and Joe to determine key design considerations in regard to incision, high water temperatures, and low habitat complexity. Presented information and concepts to the stakeholder team (Squaxin Island Tribe, Thurston County, Weyerhaeuser) and landowners. *See detail page 5*
- Performed a comprehensive suite of tasks on the **Deschutes River Mile 21 and 34.5 (SPSSEG)** project, located along a high-energy reach. Led the topographic and geomorphic survey; developed a 1D hydraulic model for FEMA no-rise flood certification; led design development and final designs; produced JARPA permit drawings and the final bid package. Designs included various types of wood habitat structures and ELJs. *Both constructed*

ADDITIONAL RELEVANT PROJECTS:

- Led development and modeling of design alternatives and interpreted model results to quantify and communicate post-project outcomes on the **Lower Deschutes River and Elwanger Creek (Olympia Ecosystems)** project in Thurston County. Alternatives include strategic channel bed raising and floodplain lowering in reaches where incision is hindering river processes; this is coupled with large-scale wood implementation in more dynamic reaches (including construction of ELJs, placement of loose wood, and BDAs).
His experience with floodplain design, coupled with his understanding of limiting factors in the watershed, no-rise analysis, and permitting constraints, meant that designs were feasible, cost effective, and optimize habitat and floodplain reconnection. *See detail page 7*
- Managed and led designs on the **South Fork Toutle River Headwaters Design (LCFEG)** project, meeting SRFB Manual 18 requirements. Phase I constructed elements have included placement of >9,800 pieces of wood over 2 river miles and ~1 mile of tributaries; Phase II construction in 2026 will progress restoration for 2 additional miles. Designs were tailored to best meet ecological objectives while considering geomorphic behavior, potential risk, and cost and constructability factors. Different types of ELJs were installed, including margin jams, channel-spanning jams, dispersed log clusters, and large deflectors, along with general loose wood loading in floodplain areas. *Partially constructed, see detail page 5*
- Supported survey, engineering design, and cost estimation on the **Sheep Creek Restoration (GRMW)** project. With elk fencing, the implemented project has successfully raised incised portions of the creek and groundwater levels to rewet the floodplain and promote thriving riparian vegetation. *Constructed, see detail page 6*
- Advised on floodplain permitting and key hydrologic/hydraulic considerations and design components on the **Fiddle Creek Restoration (Siuslaw Watershed Council)** project to ensure the floodplain permit met County code and the process was streamlined. Led development of the Stage 0/8 grading plan and assisted with design of a roughened channel and ELJs.
- Managing the 30-acre **Lower Drift Creek Nettleship Wetland Restoration (MidCoast Watersheds Council)**. Efforts follow his leadership on designs and in-field services during construction for three other tracts totaling 80 acres. The project is restoring fish habitat and sediment accretion while reducing flood risk to residences and roads, which currently overtop. Led H&H modeling, topographic survey, coordinated wetland delineation, and developed the plan for installation of water level loggers to characterize flooding risk. The 2D model informed if levee removal was a viable option.

Principal Ecologist

Joe Rudolph, PWS



Professional Wetland Scientist; Certified Remote Pilot FAA Part 107; MA Geography, BS Geospatial Science. 15 years of experience.

Experience with SRFB Manual 18

- SF Toutle River Headwaters Design
- Upper Deschutes River Planning and Design
- Green River Planning and Design
- Salmon Creek at Camp Singing Wind
- SF Toutle Brownell
- Lower Deschutes River and Elwanger Creek
- Tucannon River PA 27/28.1
- Tucannon River Restoration Project Area 5-15

Joe brings 15 years of experience as a restoration design lead and has worked throughout western Washington to plan and design projects for the enhancement of in-stream and wetland habitats. As one of the original members of W2r, Joe has served key roles in much of our firm's floodplain restoration work involving implementation of BDAs, channel or floodplain grading, and wood placement approaches. His perspective as an ecologist draws from both physical and biological sciences to address not only salmonid limiting factors but also to bring the most holistic restoration solutions to the table and realize broad, multi-species benefits. He is clear-spoken and brings a sound understanding of how field work, USACE/Ecology definitions and requirements, and regulatory review timeframes could impact the project schedule.

RELEVANT PROJECTS:

- Supported Lucas, Lauren, and other W2r team members on the **South Fork Toutle River Headwaters Design (LCFEG)** by providing a LiDAR-based assessment of geomorphic and riparian conditions, field verifying conditions, and contributing to the design of the project's subreaches. Worked with the team to navigate permitting requirements and set the project up for success with regulatory agencies, including joining staff from the USACE, Ecology, and NOAA in the field. [See detail page 5](#)
- Served as the lead ecologist on the **Tucannon River (CTUIR)** projects to guide field work, permitting, and design; his novel approach to comprehensively complete a large-scale floodplain plant community and wetland inventory (110 acres) provided insights that were pivotal in communicating proposed outcomes to agencies and stakeholders. Guided the permitting process with Ecology and USACE on the 27/28.1 project and advised on wood structure placement and orientation and that restoration actions should include partial channel fill and floodplain grading. [See detail page 6](#)
- Worked with Lucas on the **Upper Deschutes Restoration Design (SPSSEG)** project to lead the ecological and regulatory components, including desktop assessments that comprehensively inventoried trees using LiDAR data, geomorphic and wetland characterization data using relative elevation models, and a roadmap for navigating regulatory requirements. Also supported the design decision for helicopter placements, tree tipping, and wood structure designs. [See detail page 5](#)
- Managing the **Green River Planning and Design (LCFEG)** project in western Washington and leading the development of a framework for the restoration of rearing habitat for Chinook salmon along the mainstem and portions of three tributaries (four stream miles and 275 acres of floodplain). Design elements are specifically defined by the project's geomorphic assessment which determined that the mainstem river requires channel fill and floodplain cut to address the trajectory of channel degradation, while the tributaries and floodplain channels are well suited for BDAs, PALS, and broadcast wood loading.
- Led the wetland determination, habitat assessment, and design support on the **Desolation Creek Reach 3 Floodplain Restoration (CTUIR)** project that restored the floodplain system by spreading out flows using a combination of large wood, BDAs, and strategic grading to increase sediment retention, raise groundwater, and reestablish a robust riparian zone.
- Led the evaluation of relic floodplain features and existing wetland conditions on the **Wilson-Haun Wallowa River Restoration (Trout Unlimited)** project. Developed alternatives to fit within the working landscape and maximized wetland restoration working side-by-side with the client and design team. The project used BDAs, PALS, ELJs, and strategic placement of loose wood.
- Informed the design from a historical floodplain wetland complex standpoint on the **Lookingglass Creek Restoration (CTUIR)** project. W2r's design aims to address incision and achieve complex habitats, including backwater and emergent marsh transition zones. It will place large wood structures and wood throughout the floodplain.



Aquatic Scientist, Permitting Lead

Lauren Zatkos



MS Fisheries Science, BS Environmental Sciences. 11 years of experience.

CERTIFICATIONS/ TRAININGS

Washington Wetland Rating System
WSDOT Fish Passage and Stream Restoration Design #FP2025-0-BqQjgHi8DP

ISA-Certified Arborist

Smith-Root Electrofishing Certified
Wetland Delineation Certified

Scientific Boating Safety Association Certified

ORWAP/SFAM Trained

From lower Puget Sound wetlands to floodplains east of the Cascades, Lauren has worked within the various hydrologic regimes created by human-manipulated landscapes to reestablish thriving in-stream and wetland habitats for a diversity of aquatic species. She is a true collaborator and works from project initiation through final design with our team to inform habitat criteria and permitting pathway considerations. She is trained in the Washington Wetland Rating System.

RELEVANT PROJECTS:

- Informed design decisions and communicated with interest groups on the large-scale **Tucannon River Projects** (Project Area-5-15 and Big Four reaches). Performed wetland and functional assessments and guided permitting. [See detail page 6](#)
- Led the wetland assessment for Loch and Trouble Creeks (62 acres and 44 acres), of the **South Fork Toutle River Headwaters Design (LCFEG)** project. Led the biological monitoring for all of the Phase II project area, including the mainstem and Trouble and Loch Creeks; included investigation of floodplain-wide transects to collect data on vegetation communities, invasive species, aquatic habitat, potential wetlands, soil development, tree size and condition, and the presence of beaver activity, juvenile salmonids, and mussels. [See detail page 5](#)
- Collaborated with the client on site for the **Decker Creek RM 1 Restoration Design (Mason Conservation District)** project to understand habitat constraints and priorities, with an emphasis on existing habitat value to chum salmon spawning. Created fish habitat conditions maps for use within the existing conditions memo. Advised on invasive vegetation management and chum spawning habitat preferences.
- Lauren conducted research on salmonid life history strategy and life stage use for the **Salmon Creek Restoration (LCFEG)** project and assessed existing conditions to inform design alternatives to enhance fish habitat for summer and winter steelhead, spring and fall Chinook, coho, and chum salmon. She conducted macroinvertebrate community assessments and led the environmental permitting efforts.
- Surveyed the site for the 2-mile long **Roaring Creek Floodplain Design (Cascadia Conservation District)** project; identified existing fish habitat and floodplain wetlands and potential limiting factors for steelhead juvenile rearing and adult spawning habitat. Led the wetland delineation and conducted Eastern Washington Wetland Rating System evaluations to assess wetland function.
- Led a wetland and OHW determination on the **Lower Miller River Floodplain Restoration Project (King County)**. Conducted functions and values assessment utilizing the Western Washington Wetlands Rating System. Also acted as project arborist, leading the tree survey within 3.6 acres of the project area and identifying tree species (in winter), condition, and measuring DBH for over 500 trees. This work will inform the restoration design by improving understanding of existing habitats.
- Informed salmonid habitat and life history stage use and wrote the Biological Context section of the 90% Basis of Design Report on the **Waynita Creek Restoration (City of Bothell)** project.

Hydro-geomorphologist

Nora Boylan, LG



Licensed Geologist, WA, OR; MS Water Resource Science, BS Geoscience. 11 years of experience.

TRAININGS

HEC-RAS 2D, Climate Impact Groups Stormwater Trainings

USACE HEC-HMS training

PSU – Epp 224 River Restoration Professional Certificate for River Restoration Design - Sediment Transport

PSU River Restoration Certification courses, Wetland Delineation

As an ecohydrologist and geomorphologist Nora brings 11 years of experience assessing floodplain connectivity, channel morphology, aquatic habitat, and floodplain wetland vegetation. Through her experience working in geomorphically-active systems, and throughout western Washington and the Chehalis Watershed, she will guide our team in foreseeing possible conflicts between design ideas and the geomorphic inclination of the site. Her assessment methods for understanding channel migration and stream power help to resolve technical challenges such as how sediment deposition patterns influence the type and placement of restoration actions.

RELEVANT PROJECTS:

- Performed meander migration analysis and supported mapping efforts for the **Upper Deschutes Restoration Design (SPSSEG)** project. The canopy height map helped classify and inventory trees and vegetation to understand the riparian buffer. [See detail page 5](#)
- Key team member on the **Lower Deschutes River and Elwanger Creek (Olympia Ecosystems)** project; leading hydrologic and geomorphic assessment and monitoring efforts. **Thurston Conservation District** is a project partner. [See detail page 7](#)
- Leading the **Decker Creek RM 1 Restoration Design (Mason Conservation District)** project, located in the Chehalis River Basin. Completed an in-depth existing conditions assessment of historic channel alignments, stream power dynamics, sediment regime, and chum salmon habitat potential.
- Managed W2r's design services on the **EF Satsop River Restoration (Mason Conservation District)** project at Shafer Park, ensuring our design took into account geomorphic behavior. Her geomorphic assessment included meander migration calculations, habitat unit mapping, stream power analysis, and floodplain connection mapping to highlight areas that should be targeted for salmonid habitat restoration and areas that may pose risk to existing infrastructure.
- Helped resolve technical challenges on sediment deposition patterns by performing geomorphic change/ meander migration analysis on the **Mill Creek Floodplain Improvement (Walla Walla Conservation District) and Green River (LCEP)** projects. Her efforts informed the team's designs on how to best use log jams.
- Led the existing conditions assessment on the **Salmon Creek Restoration (LCFEG)** project which included field measurements, mapping habitat units, mapping geomorphic conditions, and a hydrologic analysis to identify limiting factors and data gaps.

B Past Project Experience

Project examples demonstrate the value of utilizing various restoration measures, depending on site conditions and system behavior. Such approaches and the corresponding ways we worked closely with our clients and landowners resulted in optimized uplift, achieved landowner criteria, and saved on cost.

Upper Deschutes Restoration Design **THURSTON COUNTY**

Client/dates: South Puget Sound Salmon Enhancement Group, 2020–2025

Key Team Members: L. Evans, J. Rudolph, N. Boylan

✓ **SRFB Manual 18 requirements met**

Having completed a comprehensive alternatives analysis and prioritization plan, W2r has advanced 6 miles of the Deschutes River and 3 miles of tributary to final design for this project in Thurston County. Our team has collaborated closely with SPSSEG, the Squaxin Island Tribe, Thurston County, private landowners, and the principal landowner Weyerhaeuser throughout the life of the project. Restoration strategies include placement of large eljs by helicopter to attenuate flashy hydrology, promote off-/side-channel activation, encourage sediment sorting and overbank fine sediment deposition, provide cover habitat and thermal refugia for rearing salmonids, and encourage hyporheic processes. Our team characterized stream hydrology and temperatures, geomorphic processes and rates of change, and riparian ecological processes (e.g., species communities, conditions for vegetation establishment, and large wood recruitment potential) to inform strategies.

Lucas Evans' expertise in floodplain permitting and coordination with Thurston County floodplain managers has significantly **benefited budget and timeline objectives**. By proposing to permit multiple adjoining reaches through a single CLOMR, the project avoids multiple rounds of permitting and its restoration objectives are not sacrificed.

Construction of the Phase I is planned for 2027. W2 is currently aiding in coordinating with Weyerhaeuser to harvest wood locally. We are also in the CLOMR/LOMR review process with FEMA to revise 6 miles of flood insurance rate maps as a result of the project.

Reference:

Cole Baldino, Salmon Habitat Project Manager, South Puget Sound Salmon Enhancement Group

(360) 412-0808

coleb@spsseg.org



Clearly communicated technical information has yielded support from landowners.

South Fork Toutle River Headwaters Design **CONSTRUCTED, WESTERN WASHINGTON**

Client/dates: Lower Columbia Fish Enhancement Group, 2020–present

Key Team Members: L. Evans, J. Rudolph, L. Zatkos, N. Boylan

✓ **SRFB Manual 18 requirements met**

Following the ranking of restoration opportunities for the overall project reach, we prepared concept-final designs for select subreaches. With W2r's experience implementing **a range of wood jams and habitat structures, we tailored designs to best meet ecological objectives** while considering geomorphic behavior, potential risk, and cost and constructability factors (e.g., helicopter vs. truck large wood delivery and sourcing on nearby timber lands). The constructed Phase I project included placement of >9,800 pieces of wood over 2 miles of the SF Toutle River and ~1 mile of tributaries. Wood placement within the SF Toutle River includes over 400 ELJs in various configurations channel spanning, deflector, apex, margin and floodplain jams placed both by helicopter and ground-based equipment (see photo at right).

ELJs were strategically designed to act as fixed points in the valley that will accumulate mobile wood and sediment over time to create stable conditions for vegetation succession. The design includes a matrix of loose full trees, partially pinned/buried members, and floodplain piles that interact with the ELJs to allow for habitat forming processes and increase hydraulic roughness valley-wide.

📺 *Before/ after video:*

<https://rb.gy/cc0gmv>

Reference:

Brice Crayne, Restoration Program Manager, Lower Columbia Fish Enhancement Group

(360) 904-7922

bricecrayne@outlook.com



Constructed channel-spanning jam

Lower Deschutes River and Elwanger Creek **THURSTON COUNTY**

Client/dates: Olympia Ecosystems, 2025–present

Key Team Members: L. Evans, N. Boylan, J. Rudolph, L. Zatkos

W2r's scientists and engineers are leading this 600-acre floodplain reconnection project in Thurston County to improve aquatic and terrestrial ecosystem function on 3 miles of the lower Deschutes River and 0.7 miles of Elwanger Creek. Designs seek to restore floodplain connectivity and water storage to address habitat limiting factors for Coho salmon including low summer base flows, high water temperatures, and lack of complex in-stream habitats. These limiting factors are mirrored in Thompson Creek where decades of degradation on the Deschutes have resulted in an incised and simplified river system. Our team is proposing a bold floodplain reconnection and in-stream habitat design that includes large woody debris (LWD), floodplain grading (Stage 0/8 design), construction of low-tech elements (BDAs), targeted ditch fill, and riparian corridor enhancement. W2r has intensively monitored site conditions by characterizing hydrology (surface water and groundwater), water quality (temperature), hydraulics (modeling), and vegetation cover to characterize pre-restoration conditions.

This baseline monitoring informed two alternative designs that consider large-scale floodplain reconnection grading (Stage 0/8) within two strategic sub-reaches with the highest degree of incision or a more passive "wood only" restoration approach to enhance in-stream habitat. W2r completed a data-driven assessment of the two alternatives by simulating the designs in a calibrated hydraulic model. This approach allowed us to quantify increases in inundation extents, quantity and quality of juvenile Coho rearing habitat, and the ability of the project to recharge groundwater and store floodwaters.

Tucannon River Restoration **CONSTRUCTED**

Client/dates: Confederated Tribes of the Umatilla Indian Reservation, 2020–present

Key Team Members: J. Rudolph, L. Zatkos

✓ **SRFB Manual 18 requirements met (designs for Project Area 5-15)**

Working with CTUIR and landowners, W2r designed geomorphically appropriate restoration measures to implement **multi-objective restoration projects** along the Tucannon River in Washington. Designs have balanced restoration objectives with multiple landuse needs, including grazing, hay production, and conservation.

By carefully determining what restoration measures were appropriate in different areas, and **balancing that with landowner needs**, W2r advised early on how Project Area 27/28 (1-mile reach) could be organized into phases. This also **minimized contingencies** by better aligning different design and implementation factors with funding timelines. Phases 1-2 (2020-2021) involved side channel enhancements, channel fill, BDAs, and ELJs (in-channel wood, large and small apex jams, channel margin jams, deflector jams, channel-spanning jams, and pinned and unpinned floodplain wood). Hydraulic modeling informed our design by addressing limiting factors in the Tucannon river, including temperature and stream power while maintaining or reducing impacts to adjacent properties. Phase 3 (2022-2023) expanded floodplain and wetland habitat and promotes conditions to attract beaver. Through targeted grading this phase added floodplain swales, deep scour pools, and ponds to provide deep-water habitat. The design also included strategic placement of BDAs that help pond water and **improve available forage for beaver**.

Subsequent work upstream: Our team developed a spatially-explicit physical and biological assessment for Project Area 5-15. The output of the assessment was graphically oriented to **facilitate landowner communications** and to prioritize restoration actions. In addition, our team is contracted to develop designs for six subreaches, the first of which is the "Big Four" site (currently in 80% design). Subreaches are each approximately 0.5-2 miles in length.

Although the Tucannon River is not in a FEMA-mapped floodplain, we performed a **no-rise analysis** to demonstrate no rise near a bridge.

Reference:

Daniel Einstein, PhD, Land Conservation Director, Olympia Ecosystems

(360) 870-7689

daniel@olyecosystems.org

Reference:

Kris Fischer, Fish Biologist, CTUIR

(541) 429-7547

kristopherfischer@ctuir.com



THRIVING RIPARIAN AREAS:

Wood structures in the mainstem, side channels, and floodplain prompt channel formation, drive hyporheic processes, and help riparian vegetation thrive.

Sheep Creek Restoration **CONSTRUCTED** Oregon DSL State Land Board Award

Client/dates: Grande Ronde Model Watershed, 2022-2025
Key Team Members: J. Rudolph, L. Evans

Hired to build upon prior restoration efforts at the site, W2r advanced concepts through 50%, 90%, and final design for this 3-mile/ 125 acre project. Our approach benefited from lessons learned in how to make BDAs more effective (less prone to becoming porous over time) and how to **better address stream incision**.

Our geomorphic assessment informed the stream recovery feedbacks that reverse incision, raise the water table, **and optimize conditions for riparian and wetland plant communities to thrive**. The assessment revealed limited sediment input to build the stream bed up, and **intense browse of vegetation by elk**, thereby limiting food sources for beaver. The resultant design selectively filled the main channel with material sourced from grading areas, and installed large wood, BDAs, and PALS. We specified that BDA installation use a mix of posts, willows, slash, and compacted mud to minimize structure porosity. By making BDAs less porous, their effectiveness at impounding water and retaining sediment is improved. Altogether, these actions **improve the viability of willow and other woody riparian vegetation** to encourage recolonization by beaver. Restoration measures also included elk fencing.

We oversaw the implementation of restoration measures during the 2023-2024 construction seasons. Since implementation Columbia Spotted Frogs are thriving on site.

Reference:

Jesse Steele, Executive Director, Grande Ronde Model Watershed
(541) 663-0570
jesse@grmw.org



EF Satsop River and Decker Creek Restorations **WESTERN WASHINGTON**

Client/dates: Mason Conservation District, 2023–present
Key Team Members: N. Boylan, L. Zatkos

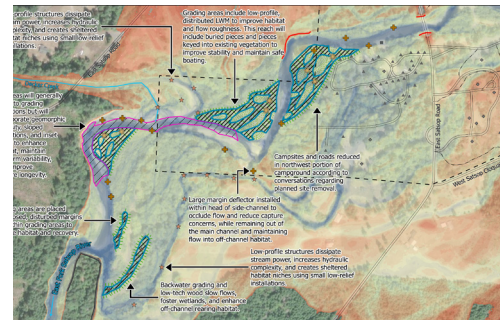
✓ **SRFB Manual 18 requirements met**

W2r is working with the Mason Conservation District (MCD) to restore a 2.1-mile reach of the East Fork Satsop River. Our team's geomorphic assessment of broader system has informed a design approach that is responsive to the river's dynamic nature. The geomorphic assessment included meander migration calculations, habitat unit mapping, stream power analysis, and floodplain connection mapping to highlight areas that should be targeted for restoration. Following our geomorphic assessment we produced three design alternatives for the 2.1-mile reach, and then divided the reach into four project areas based on corresponding design elements, landowners, and risks, and findings. We then progressed two priority project areas to conceptual design. All of our services to date have been completed on schedule.

Immediately nearby, our team is developing a design for a one-mile reach of Decker Creek, a tributary to the EF Satsop. Consistent with the Chehalis Basin Aquatic Species Restoration Plan (ASRP), the project recognizes the importance of tributaries like Decker Creek in supporting basin-wide aquatic diversity by providing off-channel habitat, seasonal floodplain connectivity, and storage of sediment and large wood during high-flow events that influence downstream channel form and habitat availability. Stream power dynamics and sediment regime are key variables to which our design responds as we aim to manage bank retreat, increase off-channel habitat for chum, and improve floodplain connectivity.

Reference:

Jacob Murray, Habitat Programs Coordinator, Mason Conservation District
(360) 358-0999
jmurray@masoncd.org



Concept map for one of the priority areas of the EF Satsop project

EXPERIENCE - **No-Rise Analysis and Floodplain Permitting**

W2r does floodplain permitting for nearly every project we do—most projects result in a no-rise; some projects have required a CLOMR. We are also experienced leading coordination efforts with FEMA and model development for CLOMR/LOMR map revisions.

- No-rise and floodplain permitting project examples: Upper Deschutes River (SPSSEG), Methow River Sugar Channels and 3R Restoration (MSRF), Snoqualmie River Tributaries (WSDOT/Atkinson), Methow R. Chewuch River/ Hummingbird (Confederated Tribes of the Colville Reservation), Columbia River Franz Lake (Lower Columbia Estuary Partnership), Finn Rock Reach (multiple phases, USFWS, Mckenzie R. Trust, EWEB), Tucannon R. Restoration (CTUIR), Coffee Lake Creek (Metro), Lower Drift Creek (McKenzie R. Trust), Deschutes RM 34.5/21 (SPSSEG), Bandy Slough (Coquille WA), and others.

Methodology and Background

Background & Understanding

Thurston Conservation District (TCD) has identified an unconstrained opportunity for floodplain reconnection, riparian restoration, and enhancement of in-stream habitat on Thompson Creek, a tributary to the Skookumchuck River. The creek faces decades of degradation from industrial timber, historic agricultural and land-use practices (i.e., grazing and mowing), removal of the riparian corridor, and inhibiting large woody debris inputs. These impacts, which are common in the Skookumchuck basin, have culminated in an incised and simplified creek with a disconnected floodplain dominated by invasive vegetation. Restoration will aim to reverse degradation by restoring hydro-geomorphic processes that put the creek, floodplain, and riparian corridor on a recovery trajectory. The rural and undeveloped character of the project site provides an ideal opportunity to explore valley-wide floodplain reconnection that maximizes the quantity and quality of aquatic habitat, enhances ground-water recharge and water storage, and expands riparian and wetland habitats.

We understand this project contributes to broader watershed restoration goals identified in the Chehalis Basin ASRP (ASRPSC, 2019). The Skookumchuck River basin provides core habitat for spring-run Chinook and coho salmon, but these populations are limited by high water temperatures, limited cold-water holding habitat, and low habitat complexity. This project offers an opportunity to recharge groundwater, increase riparian shade, and enhance cold-water inputs to the Skookumchuck River. Restoring contiguous wet prairie and floodplain habitats along tributaries is also a priority action for this ecological sub-region to address temperature impacts and support beaver habitat.

Methodology

In close collaboration with the TCD, Wolf Water Resources' (W2r) experienced interdisciplinary team will identify the underlying causes of degradation and propose process-based restoration designs that address these impacts, reset floodplain processes, and maximize habitat uplift.

Although this project is unconstrained by infrastructure, it's still likely to face challenges with land ownership and regulatory requirements (e.g., floodplain permitting). W2r's team is prepared to address these challenges based on our technical experience and through early communication with regulatory agencies (e.g., Thurston County). Our interdisciplinary team will develop a restoration design that is effective at achieving project goals and is feasible from a regulatory and risk standpoint.

The following tasks include the recommended steps that we believe will make the project successful. Some liberty has been taken with renaming and renumbering the tasks to an organization that we feel suits the project's needs; we anticipate collaborating closely with TCD on its refinement.

TASK 1: Topographic Survey, Baseline Data Collection, and Geomorphic Assessment

W2r will conduct an interdisciplinary field and desktop-based assessment of baseline conditions to contextualize our understanding of Thompson Creek and to develop a database necessary for design. We propose the following sub-tasks:

1) Topography and bathymetry: WDNR's 2024/2025 Lidar topography is publicly available and covers the project area (NV5, 2025). W2r has utilized this dataset on past projects including the Lower Deschutes River and Elwanger Creek restoration and Upper Deschutes Restoration design. We know from our previous experience that the LiDAR DEM is not accurate for channel bathymetry, and it overpredicts elevations where dense reed canarygrass (RCG) vegetation is dominant. We propose a 1-day survey with RTK-GPS equipment that will include dense transects along Thompson Creek for full bathymetric coverage and a targeted topographic survey within the floodplain to ground-truth RCG-dominated areas. Survey data will be incorporated with LiDAR to create a digital elevation model (DEM) mosaic. This DEM will serve as a baseline for design, modeling and assessments.

2) Geomorphic Assessment: W2r will assess the project reach to understand geomorphic processes and their trends. This information is critical to identifying site-specific restoration treatments and understanding the spatial and temporal

W2r's depth of experience with floodplain reconnection and large woody debris design will ensure the Thompson Creek design addresses habitat limit factors and is implemented seamlessly.

scales over which they will provide resilience to the intended biophysical targets. We will characterize the following during the field visit and desktop analyses:

- Sub-reach delineation of the mainstem, floodplain, and wetland based on dominant hydro-geomorphic attributes to provide a basis for treatment types considered during the alternatives analysis.
- River channel, floodplain, and wetland morphologies (widths, slopes, natural vs. anthropogenic confining features, topographic variability, active deposition and erosion areas, lateral migration, soil types, and relic channel and ditch features). This task will include developing a relative elevation model (REM) map. A preliminary REM has been developed for this proposal, see page 4.
- Stream evolution stage (existing and likely trajectory).

3) Baseline Data Collection: W2r will complete a desktop-based assessment to compile relevant geospatial datasets including WDFW spawner surveys, hydrology studies from the downstream Thurston County bridge replacement, water quality, and limiting factors for target species. The desktop-based assessment will be coupled with a rapid field-based ecological assessment led by our wetland scientist Lauren Zatkos that will supplement vegetation, hydrology and soil data collected during the wetland determination (Task 5).

Deliverables

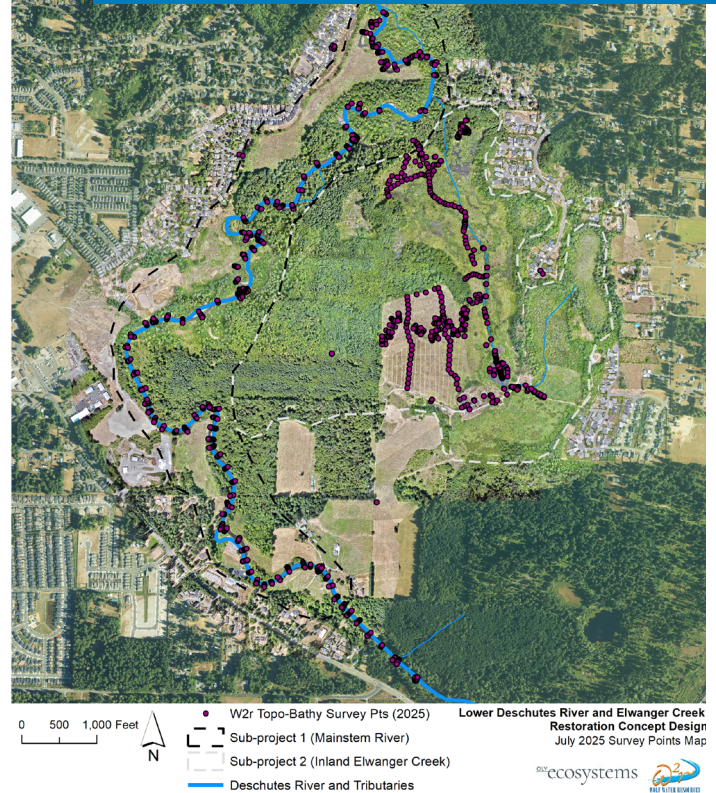
- Survey data and a refined digital elevation model (DEM) that includes full bathymetry on Thompson Creek.
- Geomorphic map including project sub-reaches and key geomorphic features.
- REM produced from the refined DEM.
- Geospatial database from field and desktop-based data collection.

TASK 2. Hydrology and Hydraulics

This task is added to support assessment of conceptual designs, communicate project outcomes to the landowner (Judy) and other stakeholders, and support detailed design and floodplain permitting. Subsequent tasks are renumbered.

W2r will develop a 2D hydraulic model of the project vicinity using USACE's HEC-RAS modeling platform. The model will utilize the refined DEM produced in Task 1 to ensure modeling results are precise enough to help the project team answer questions about floodplain activation, sediment dynamics, fish and wildlife limiting factors, habitat suitability, and flood risks (as needed). We propose using the hydraulic model to simulate existing conditions, up to two conceptual alternatives, preliminary design and final design. The hydraulic model will also be a necessary tool for floodplain permitting and assessment of changes to flood risk that will likely be required by Thurston County.

W2r conducted a 2-day ground and boat-based topo-bathymetric survey led by Lucas Evans that covered three river miles on the Deschutes River in Thurston County to support modeling and design on the Lower Deschutes River and Elwanger Creek Restoration project.



There are no known stream gages on Thompson Creek and the most proximally known gage to the project site is located on the Skookumchuck River near Vail at USGS station 12025700. To fill this data gap, W2r will complete a desktop-based assessment of hydrology using regional regression relationships and/or scaling of a nearby gage with similar watershed characteristics. This assessment will develop flood frequency statistics (e.g., the 100-year flood discharge) and flow duration statistics (e.g., the 50% duration or average discharge) to characterize typical flows on Thompson Creek.

Deliverables

- Hydraulic modeling results for existing conditions, two concept alternatives, preliminary design and final design.
- Annual flood frequency statistics and daily flow duration statistics.

On the Lower Deschutes River and Elwanger Creek restoration project, hydraulic modeling was applied to map floodplain inundation, predict water storage, and determine aquatic habitat uplift for juvenile Coho. These metrics will inform selection of an alternative design that addresses limiting factors in the watershed. Lucas was the lead modeler and engineer that developed concept alternatives that propose reach-scale wood implementation, floodplain lowering and channel bed raising to address incision, riparian restoration and BDAs.

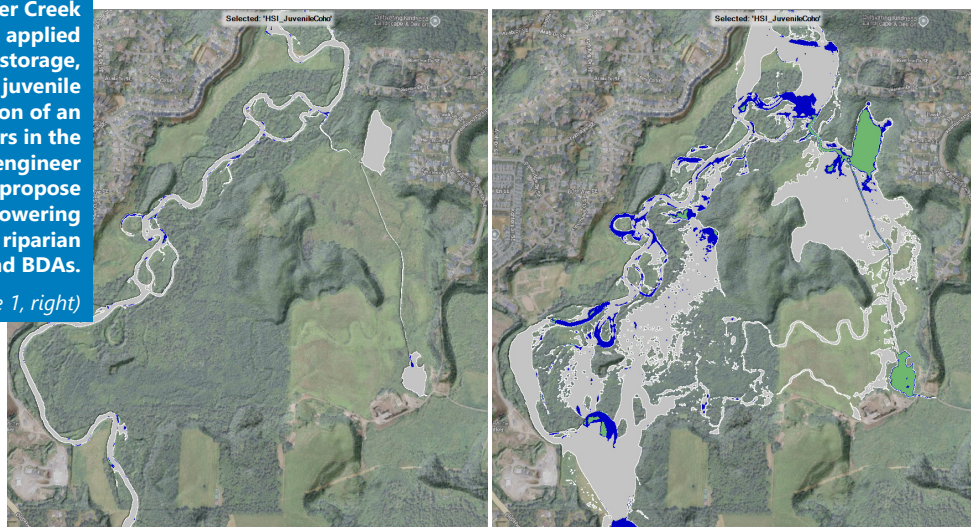
(Existing conditions, left; Alternative 1, right)

Coho Rearing Habitat Suitability Criteria

 Depths >2.5 ft and Velocities <0.2 ft/s

 Depths >1.6 ft and Velocities <1 ft/s

 Depths <1.6 ft or Velocities >1 ft/s



TASK 3. Conceptual Design & Alternatives Analysis

High water temperatures, low habitat diversity, poor riparian conditions, and reduced quantity of in-stream and floodplain habitats are the primary limiting factors for Coho and spring-run Chinook salmon in the watershed. Channel incision and disconnection of off-channel habitats is specifically identified as a key factor in the Skookumchuck watershed tributaries exacerbating these issues. Conceptual designs must address channel incision to reverse decades of degradation.

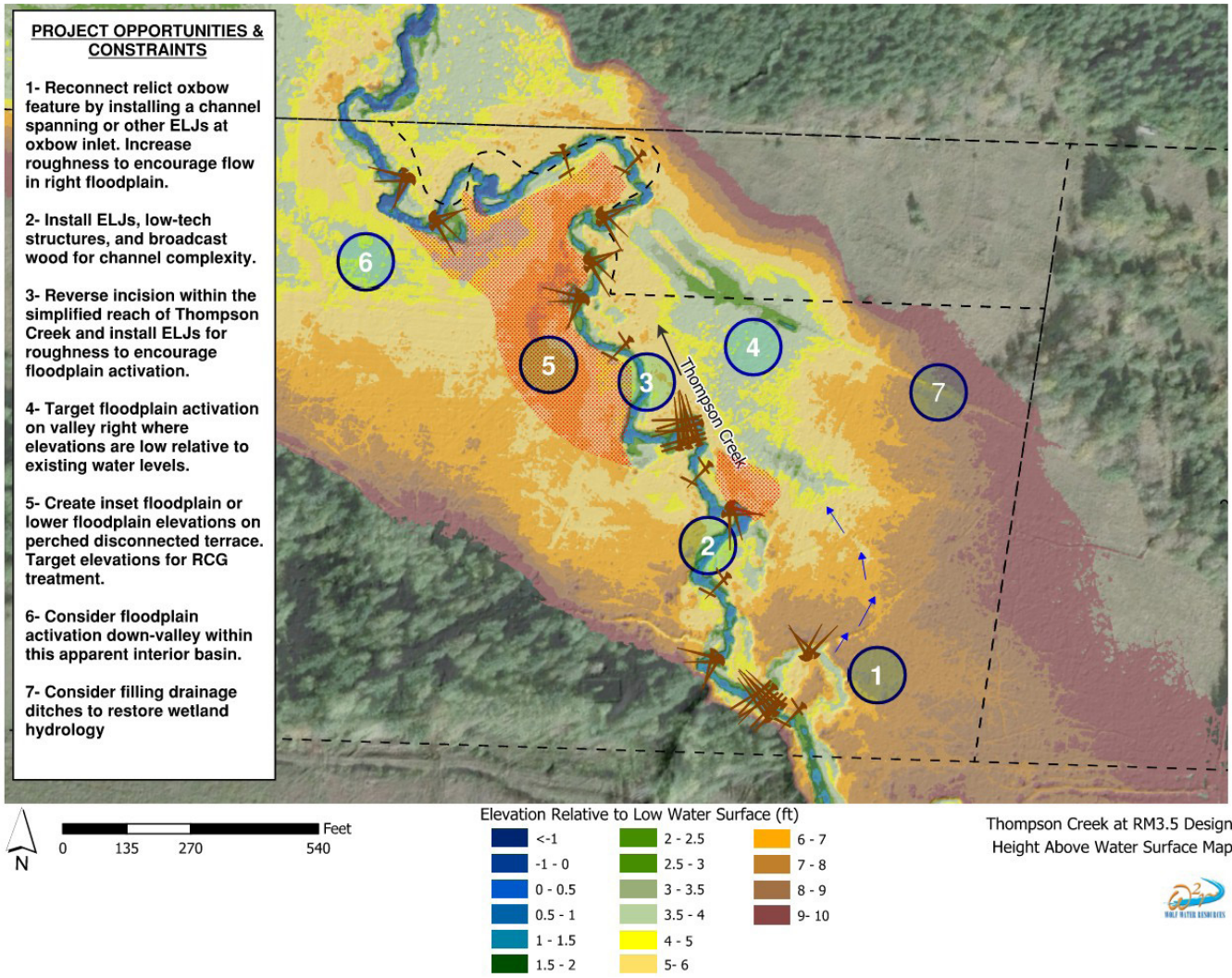
W2r will collaborate with TCD and the landowner to develop 2-3 concept alternative designs informed by our collective understanding of site conditions gained during tasks 1 and 2. We understand that TCD and project partners have begun considering restoration actions and have divided the project area into broad sub-reaches. The proposed concept designs will incorporate these elements and other considerations already identified by TCD and agency stakeholders. Concept alternative maps will be developed in ArcGIS Pro and will incorporate/consider the following actions (refer to the relative elevation figure below for a vision of opportunities that we see on the site):

- Full valley-reset (stage-zero) for perennial floodplain connectivity (including bed raising and floodplain lowering earthwork).
- Floodplain benching and/or construction of an inset “stage-8” floodplain condition.
- Placement of large woody debris including consideration of channel spanning, marginal and/or island forming log jams.
- Low-tech processed-based restoration (i.e., BDAs, PALS, bioengineering).
- Filling and plugging existing drainage ditches.
- Recreational trail and pedestrian bridge construction.
- Reed canarygrass scraping and treatment of other invasive species.

- Upland prairie (pollinator emphasis) and oak savannah restoration (where appropriate).
- Revegetation and establishment of a riparian corridor and diverse wetland plant communities

Selection of a preferred restoration concept will define the trajectory of this project; therefore, we feel there should be sufficient assessment of outcomes and communication of those outcomes to TCD, agency stakeholders, and the private landowner. We propose completing a data-driven alternatives analysis that quantifies the concept alternatives ability to address habitat limiting factors identified in the ASRP (ASRPSC, 2019). This assessment will be supported by hydraulic modeling to predict key project metrics that may include in-stream aquatic habitat suitability, floodplain connectivity, and/or water storage. Modeling outcomes will be summarized in a succinct alternative’s matrix as a rationale for selection of a preferred design. W2r anticipates supporting TCD in communicating these results to the salmon recovery funding board (SRFB) in a presentation and in a design report that satisfies RCO Manual 18 (Appendix D) requirements.

TCD has the opportunity to work with an engaged landowner whose support will be essential for project implementation. W2r appreciated meeting Judy during the pre-proposal site visit and looks forward to working with TCD to develop clear educational materials and graphics to communicate the restoration design. After selection of a preferred design, we propose creating a graphical rendering overlaid on aerial imagery to illustrate the long-term restoration vision following vegetation recovery. This visualization can support communication with Judy and may also serve as an outreach tool for the adjacent NE landowner whose property includes a portion of Thompson Creek and floodplain influenced by the project. Our project partners have used this type of graphic to communicate the project to funders, regulators, and basin partners.



Deliverables

- 2-3 concept alternative maps developed in ArcGIS Pro
- Preferred alternative concept design
- Conceptual design report following SRFB's Manual 18 (Appendix D) requirements
- Alternatives analysis matrix & hydraulic modeling results for 2-3 restoration alternatives
- Graphical rendering of the preferred concept design

TASK 4. Preliminary Design

The preliminary design phase represents a significant step in a restoration project's development as the preferred concept is detailed, rigorously evaluated, and eventually permitted. Feedback from project partners will be incorporated to advance the design, prepare the 60% engineering plan set, material quantities, construction cost estimate, and basis of design report (BDR). The cost estimate will be consistent with the design and based on our recent construction costs for similar work in the region, such as the Upper Deschutes River and South Fork Toulte River restoration projects. This phase will be supported by hydraulic modeling, grading and sequencing plans, large wood structure stability calculations and an adjacent property risk assessment.

Deliverables

- Preliminary (60%) design drawings and construction cost estimates.
- Preliminary Basis of Design Report satisfying RCO Manual 18 (Appendix D)

TASK 5. Permitting

W2r will coordinate early with regulatory agencies to establish a clear and efficient permitting pathway for the project. In coordination with TCD, W2r will schedule pre-application meetings with regulators to gather feedback and confirm the most appropriate permitting strategy. Streamlined pathways, including the Fish Habitat Enhancement Project (FHEP) process, will be explored where applicable.

The proposed restoration actions will require permit authorizations under the Clean Water Act and from WDFW. W2r will prepare and submit a Joint Aquatic Resources Permit Application (JARPA) to obtain the necessary approvals, including:

- Clean Water Act Section 401 and Section 404 authorizations
- WDFW Hydraulic Project Approval (HPA)

The Section 404 authorization will also require compliance with federal cultural and endangered species regulations. While archaeological investigations will occur outside this scope, W2r will coordinate with TCD to ensure the U.S. Army Corps of Engineers receives the documentation necessary to complete its review under Section 106 of the National Historic Preservation Act and Section 7 of the Endangered Species Act. Because the proposed restoration actions align with Nationwide Permit 27 and the SLOPES V Restoration Program, individual ESA consultation is not anticipated.

Given documented salmonid use in Thompson Creek and mapped aquatic resources identified in the USFWS National Wetlands Inventory, wetlands mapping and documentation will also be required for Ecology review. Based on W2r's recent experience in Washington, including work on the South Fork Toutle River restoration project, a determination-level wetland assessment may be sufficient to map resources within the project area. This streamlined approach, paired with best professional judgment in applying the Washington Wetland Rating System, would be confirmed through early coordination with Ecology and could reduce permitting time while meeting state regulatory requirements

Floodplain Permitting

Thompson Creek is mapped as a Zone A special flood hazard area (SFHA) on the FEMA flood insurance rate map (FIRM). Zone A designation requires county review and a floodplain development permit for any "disturbance" including cut and fill within the zone, but it's our expectation that a formal "no-rise" analysis will not be required. The National Flood Insurance Program (NFIP) code of federal regulations (CFRs) Title 44 Section 60.3(b) describes requirements within SFHAs and states that the "no-rise" requirement is only required for development within a mapped floodway, which Thompson Creek does not have. We expect that a rise in base flood elevations (BFEs) up to one foot will be allowable, and rises

exceeding one foot may also be permitted, depending on Thurston County's interpretation of the CFRs. The CFRs require that base flood elevations be "determined" for development exceeding 5-acres and that these "developments" must be reasonable safe from flooding within Zone A.

W2r will complete a flood hazard analysis using the hydraulic model developed in Task 2 to evaluate project flood risks, predict flood levels, and document compliance with Thurston County floodplain permitting requirements.

Key Elements

- Assess flood risks and predict flood levels and estimate Base Flood Elevations (BFEs)
- Certify that existing structures and infrastructure are reasonably safe from flooding and not adversely impacted
- Prepare a concise technical memo that evaluates and reports potential changes in flood elevations to support Thurston County land use development permit review
- Conduct a flood storage analysis to meet Thurston County's higher-than-FEMA floodplain standards (as required)
- Coordinate early with the Thurston County floodplain administrator (Noah Watson) to confirm methodology and interpretation of County code

Deliverables

- *Flood hazard analysis memorandum & certification of no-adverse flood risks.*
- *Thurston County Land-Use Permit (covers the floodplain permit).*

TASK 6. Final Design

At the final design stage, W2r will advance the preliminary design drawings, construction cost estimates, and basis of design report with sufficient detail for construction bidding and implementation. This phase will also include the development of technical specifications that detail construction requirements, materials, measurement and payment.

Prior to finalizing designs and putting the project out to bid, we recommend that TCD have a wood source identified with a plan in place for harvest and import of that material. In our recent experience working with Weyerhaeuser, WA DNR, and other private logging companies, there are significant cost savings realized when wood is purchased directly from an adjacent landowner. On this project, we recommend working with Weyerhaeuser on wood acquisition and purchase. Our recent experience working with Weyerhaeuser on their Vail Tree Farm within the Deschutes River watershed means we could connect TCD with the appropriate regional employees and advise the wood purchase negotiations.

Deliverables

- *Final Design Plans, Construction Costs & Technical Specifications*
- *Final Basis of Design Report*



Photo-realistic rendering of a floodplain reconnection vision on the Walla Walla River developed by W2r to support public outreach on the Waluula Floodplain Reconnection project.

D Schedule

W2r recognizes the project schedule is driven by grant funding deadlines in August/September of 2027 for final design. We expect the project to kick off in April 2026 and close at the end of August 2027 to meet this deadline. It's our understanding that construction implementation is not anticipated until 2028 at the earliest; therefore, we feel that completing all the final project deliverables by the grant deadline will put the project on track without construction or permitting delays. While TCD has indicated that there

W2r has firsthand experience working with Thurston County floodplain administrators to permit habitat restoration on the Deschutes River. Lucas' direct experience with the County, and his floodplain permitting experience for restoration projects, will ensure Thompson Creek floodplain permitting moves seamlessly without surprises or challenges that delay implementation.

is flexibility to extend the project schedule through the summer of 2027, preference is given to have final design deliverables earlier if possible. We've developed the following schedule with a target date of May 2027 for final design. This target was selected to avoid the busy summer construction season and give TCD plenty of time to consider next steps with contracting, funding, and wood acquisition. Permitting timelines extend past the May 2027 window to account for responses for additional information or questions during the review process.

For reference, we've also included a recommended construction schedule and timing for wood acquisition, assuming 2028 becomes the anticipated construction target. This is purely for TCD's forecasting and reference; we don't anticipate these tasks being included in this phase of work.

The following narrative provides a brief description of schedule as it relates to each task:

Task 1

- W2r to complete all fieldwork, including the topographic survey, geomorphic observations, and wetland determination data collection in early spring. April is the target month for this fieldwork, with May as a backup.
- Desktop-based data collection and mapping can start as soon as a contract is signed in March or early April. This work would include preparation for the field reconnaissance.

Task 2

- The hydrology analysis can start at any time and will be completed concurrently with baseline data collection in the spring.

- Development of the hydraulic model is contingent upon the bathymetric survey and development of a refined DEM. We anticipate this occurring in the May-June time-frame. The model will be updated at each major design phase.

Task 3

- Our goal would be to have conceptual alternative maps and a framework for the alternatives analysis completed by June 15th, before W2r's 2026 summer construction season.
- Assessment of the alternatives is scheduled to progress through the summer with selection of a preferred concept targeted for August 2026.

Task 4

The schedule provides 5 months for development of a preliminary design in the fall/winter of 2026. This extended timeline includes a buffer to allow SRFB and other stakeholders to review the preferred conceptual plan and provide feedback.

Task 5

- The permitting timeline is broken into three categories, which operate on independent timelines.
 - *Wetland determination work will start at the onset of the project with field data collection, and we anticipate having final products to submit to Ecology in late spring.*
 - *W2r plans to reach out to Thurston County for an initial floodplain permitting pre-consultation at the preliminary design phase. This check-in will establish the permitting approach. Work on the floodplain permit will begin in earnest once final designs are in a draft stage in the spring of 2027.*
 - *JARPA development, including work on the 404, 401, and ESA, is anticipated to start concurrently or just after final design.*

Task 6

- The schedule provides 4-months for development of final designs in the winter/spring of 2027 with a final target date of May 2027.

See schedule next page

Item

5

NRCS Updates

3/17/2026

Program updates:

- The entire West Area is experiencing problems with meeting eligibility paperwork deadlines for new applications.
 - FSA is extremely understaffed
 - NRCS has limited capacity to support farmers in filling these forms out
 - Solutions:
 - encourage farmers interested in NRCS programs to complete eligibility paperwork **WAY** ahead of any due dates.
 - Consider additional eligibility workshops in the winter for following funding season (TCD & NRCS have done this in the past and it was successful!)
- **Total funding available is significantly lower this year than last year.**
- This year, program funding is divided primarily by Area. **This is a departure from previous years.**
 - For example, Irrigation improvement projects used to compete Statewide, which resulted in Central Washington projects “eating up” most of those funds. Now, irrigation projects compete within the area, meaning it should theoretically be easier for these types of projects to be funded on the West side.
- **Act Now** projects are still funded out of a State-wide funding pool. **Funding selections in this pool are made every 3 weeks until funding runs out.**
 - High tunnels, low tunnels, and Conservation Planning Activities are the only practices eligible under this program option.
 - Next round of selections will be made March 27th.
 - Applications are accepted year-round, and program eligibility can be completed anytime (as long as it’s before funding runs out for the year).
- EQIP and CSP are still the main programs we’re funding.
 - Puget Sound Team received over 200 applications this year! Of those, 48 are in Thurston County.
 - 7 applicants are partnering with TCD in various capacities (forestry planning, waste management BMP’s, riparian planning / planting activities)
 - **Olympia service center historically obligates about 25 new contracts per year. Expect this number to decrease this year due to less total funds available.**
 - First round of Preapprovals will be announced mid-April.
- RPP: Regenerative Pilot Program
 - New this year & comes in 2 flavors: RPP-EQIP, or RPP-CSP.

NRCS Updates

3/17/2026

- Requirements:
 - Participant conducts soil health testing using the CEMA 216 practice standard in both the first and final year of the contract.
 - Participant must work with a Qualified Individual to complete this requirement.
 - **This is a potential barrier: unknown how many QI's exist in Thurston County, and NRCS is not allowed to compile a list to share with our clients!**
 - Contracts are a minimum of 5 years long (up to 10 years maximum)
 - Client must include at least 1 of the RPP "Primary Practices"
 - Can either already be doing it, or can adopt it through the contract. List at the end of this document.
 - Operation must be meeting all soil and water resource concerns by the end of the contract period. How much of the farm is meeting that threshold depends on which RPP flavor: EQIP only 1 land unit must meet, vs CSP one entire land use.
 - NRCS must write RMS level plan for the operation.
- 25% of all Washington's program funding must go specifically to RPP this year.

Looking ahead:

- Determine how many Qualified Individuals exist in Thurston County for participants to work with if they are awarded RPP contract. NRCS cannot compile a list that is public-facing, unfortunately.
- Olympia NRCS specifically is facing difficulties working with dairy farmers at this time, due mainly to diminished internal capacity to complete CNMP's (Comprehensive Nutrient Management Plans). Discussions with partners may be needed to build this capacity in the short term in order to help these producers leverage NRCS financial assistance for manure storage, waste transfer, etc. while NRCS continues working on the issue internally.
- NRCS reimbursement rates went down significantly for many wildlife practices this year. Unsure if that will be adjusted for next year. May need to lean into partnering on these projects to help make them economically viable for our producers. (e.g. hedgerows, wildlife habitat planting, etc).

NRCS Updates

3/17/2026

Eligible Practices and Activities

The following table identifies primary regenerative management practices by land use. Conservation plans and contracts under the RPP must incorporate at least one primary regenerative management practice which is either already being implemented by an eligible producer or planned for future implementation. The practice must meet all general and additional criteria of the applicable conservation practice standard to address targeted resource concerns within the pilot program. Conservation plans and contracts developed under RPP may also include supporting practices as well as other practices and activities.

Conservation Practices

Code	Asset Name	Crop	Forest	Pasture	Range
328	Conservation Crop Rotation	Y	N	N	N
330	Contour Farming	Y	N	N	N
331	Contour Orchard and Other Perennial Crop	Y	N	N	N
340	Cover Crop	Y	Y	Y	N
554	Drainage Water Management	Y	Y	Y	Y
511	Forage Harvest Management	Y	Y	Y	Y
666	Forest Stand Improvement	N	Y	Y	N
449	Irrigation Water Management	Y	Y	Y	N
484	Mulching	Y	Y	Y	Y
590	Nutrient Management	Y	Y	Y	N
595	Pest Management Conservation System	Y	Y	Y	Y
528	Prescribed Grazing	Y	Y	Y	Y
329	Residue and Tillage Management, No Till	Y	N	N	N
345	Residue and Tillage Management, Reduced	Y	N	N	N
585	Stripcropping	Y	N	N	N

Regenerative Pilot Program

Regenerative Agriculture is a conservation management approach that emphasizes natural resources through improved soil health, water management, and natural vitality for the productivity and prosperity of American agriculture and communities.

This pilot program addresses whole-farm resource concerns through support for voluntary regenerative agriculture conservation plans. It puts American farmers first as a part of the solution to Make American Healthy Again (MAHA) by supporting access to American-grown whole foods, critical to addressing the chronic disease crisis nationwide.



For Producers, this Means:

- Bundled practices will be integrated into a single application, making programs easier to access and more impactful;
- Whole-farm holistic conservation planning is the centerpiece of the program, ensuring that all resource concerns (soil, water, and natural vitality) are addressed together, not piecemeal;
- Conservation planning and producer objectives drive the process, ensuring site-specific solutions that work for the producer;
- Outcomes are tracked, measured, and credited back to the farmer; and
- Producers at every stage, from beginners just starting out with cover crops to advanced operations with years of conservation experience, will find a pathway through this pilot program.



For Consumers, this Means:

- The NRCS Regenerative Pilot Program puts American farmers first as a part of the solution to Make America Healthy Again;
- Access to American-grown whole foods is critical to addressing the chronic disease crisis nationwide; and
- Engaging the supply chain to give farmers assistance and credit for taking care of the soil, water, and land while productively bringing food to our tables, gives American consumers more access to healthy choices.



Guidance documents lack the force and effect of law, unless expressly authorized by statute or incorporated into a contract. USDA may not cite, use, or rely on any guidance that is not available through their guidance portal, except to establish historical facts.



Primary Practices

- ◆ Conservation Crop Rotation
- ◆ Contour Farming
- ◆ Contour Orchard and Other Perennial Crop
- ◆ Cover Crop
- ◆ Drainage Water Management
- ◆ Forage Harvest Management
- ◆ Forest Stand Improvement
- ◆ Irrigation Water Management
- ◆ Mulching
- ◆ Nutrient Management
- ◆ Pest Management Conservation System
- ◆ Grazing Management
- ◆ Residue and Tillage Management, No Till
- ◆ Residue and Tillage Management, Reduced
- ◆ Stripcropping



Producer Requirements

As part of participating in Regenerative Pilot Program, producers must:

- Work with NRCS staff, partners, or technical service providers to conduct a whole-farm assessment;
- Use at least one primary regenerative management practice; and
- Agree to perform soil health testing in the first and last year of the contract (at a minimum) to establish a starting baseline and to record the resulting changes.

The whole-farm assessment includes all resource concerns, and it must meet NRCS planning criteria in the soil and water resource categories.



MORE INFORMATION

Farmers and ranchers interested in regenerative agriculture are encouraged to apply through their local NRCS Service Center by their state's ranking dates for consideration in FY2026 funding.

Applications for both EQIP and CSP can now be submitted under the new single regenerative application process.



SCAN THE QR CODE
FOR MORE INFO.

Guidance documents lack the force and effect of law, unless expressly authorized by statute or incorporated into a contract. USDA may not cite, use, or rely on any guidance that is not available through their guidance portal, except to establish historical facts.

Item

6

Thurston Conservation District Rates and Charges Update Memo



To: TCD Board of Supervisors
From: Sarah Moorehead, Executive Director
Date: March 25th, 2026
Subject: Rates and Charges Update

After soliciting quotes to conduct an updated rate study for Thurston Conservation District's Rates and Charges, FCS Group was selected to perform this work for TCD.

Below is a general scope of work that FCS Group will perform over the coming weeks as we prepare to consider an update to TCD's system of rates and charges:

Task 1 | Project Kickoff Meeting / Data Collection / Review

A project initiation meeting will be scheduled at the commencement of the project with the consultant and District's project team. The items covered at the meeting will include reviewing the scope of work, identifying project objectives, expectations, and deliverables, outlining the project schedule and key milestone review points, and discussing appropriate lines of communication. We have budgeted this meeting to be conducted via a remote session. FCS will provide a data needs list encompassing District budgeted expenses at the program level. The data will be reviewed, analyzed, and validated for inclusion in the study process.

Task 2 | Technical Analysis

Using District cost and customer base information, update the cost allocation tool made up of the following components:

Customer data compilation: Work with the Thurston County Treasurer/Assessor's office to compile customer information needed to develop rates. *Data used recently for billing database development at the end of 2025 will be utilized to develop the customer base to achieve project efficiencies.*

Cost allocation process: Work with District staff to allocate work program expenses to functions of service and customer classes based on cost drivers and work benefit provided. *Baseline model architecture will be used for cost allocation process. Modifications to model architecture would require budget modifications.*

Rate design: Update the rate structure and level in order to meet TCD-identified needs and recover the District revenue requirement.

Task 3 | Documentation

The methodology, key assumptions and results will be documented in a draft technical memo. That memo will be finalized after incorporating District comments.

Task 4 | Meetings

It is anticipated that meetings will be needed with District Supervisors and TCD staff. The following meetings are included and are planned to be performed remotely:

One (1) meeting with District staff to review and discuss findings.

One (1) meeting with District Supervisors to present and discuss findings and solicit input and direction.

High Level Timeline

January - March	Bid for rate study contractor and complete contracting process
March – Early May	Conduct rate study
May – Early June	TCD Board holds TCD Rates and Charges Public Hearing
June	TCD Board adopts new rates if desired
July	Submit new rate proposal to Thurston County
August – Nov	Thurston County conducts public hearing and resolution adoption



Thurston Conservation District Board of Supervisors Work Session Topic List & Board Meeting Agenda

April 22, 2026, 5:00 pm - 8:00 pm

Zoom Meeting Link:

<https://zoom.us/j/91658577844?pwd=cDgvaC9jcWRBU0luUFFHc1lrb3hLQT09>

Passcode: 2918

Meeting ID: 916 5857 7844

Call in: 1-253-215-8782

Work Session Topic List

5:00 pm – 6:00 pm

1. Topic List Review, All
2. Staff Presentation: Crew Projects Update, *Taylor Sherrow*
3. Community Partner Presentation, *TBD*
4. Annual Plan Development, *Executive Director Moorehead*
5. Legislative Update, *Executive Director Moorehead*
6. Strategic Planning Outreach, *Executive Director Moorehead*
7. Conservation and Education Center (CEC) Development, *All*
8. Important *Updates* & Announcements
 - a. Board of Supervisors, *All*
 - b. Executive Director, *Sarah Moorehead (Executive Director)*

Board Meeting

6:30 pm – 8:00 pm

- | | |
|--|------------------------------------|
| 1. Welcome, Introductions, Audio Recording Announcement | 6:30 PM
<i>5 minutes</i> |
| 2. Agenda Review | 6:35 PM
<i>5 minutes</i> |
| 3. Consent Agenda – Action Item | 6:40 PM |
| A. March 25, 2026, Board Work Session & Meeting Minutes | <i>5 minutes</i> |
| B. April 2026 Financial Report | |
| 4. Public Comment | 6:45 PM |
| *Three minutes per person | <i>10 minutes</i> |
| 5. Partner Reports (if present) | 6:55 PM |
| A. Natural Resources Conservation Service, (NRCS) <i>TBD</i> | <i>15 minutes</i> |

- B. Washington State Conservation Commission (WSCC), *Josh Giuntoli*
- C. Washington Association of Conservation Districts (WACD), *Sarah Moorehead*

- | | |
|--|-------------------|
| 6. Governance, All – Action Item | 7:10 PM |
| A. May 27, 2026 Work Session Topic List & Meeting Agenda Development | <i>10 minutes</i> |
| 7. Executive Session: To consider the selection of a site or the acquisition of real estate | 7:20 PM |
| <i>RCW 42.30.110 (1b) To consider the selection of a site or the acquisition of real estate by lease or purchase when public knowledge regarding such consideration would cause a likelihood of increased price.</i> | <i>15 minutes</i> |
| 8. Executive Session Report Out – Action Item | 7:35 PM |
| | <i>5 minutes</i> |
| 9. Executive Session: To discuss potential litigation | 7:40 PM |
| <i>RCW 42.30.110 (1)(i) to discuss with legal counsel representing the agency litigation or potential litigation.</i> | <i>15 minutes</i> |
| 10. Executive Session Report Out – Action Item | 7:55 PM |
| | <i>5 minutes</i> |
| Adjourn | 8:00 PM |

Informational Only Items:

- I. Executive Director’s Report*

Important Future Dates

May 2026

- | | |
|--|--------|
| WACD Board Meeting 6:00- 8:30 p.m. | May 18 |
| WSCC Meeting, South Yakima CD | May 20 |
| Memorial Day, TCD Office Closed | May 25 |
| TCD Board Work Session & Meeting 5:00 - 7:30 p.m. In-person and Virtual (Zoom) | May 27 |

June 2026

- | | |
|--|---------------|
| Annual WADE Training Conference, Leavenworth | June 8, 9, 10 |
| WACD Board Meeting 6:00 - 8:30 p.m. | June 15 |
| Juneteenth, TCD Office Closed | June 19 |
| TCD Board Work Session & Meeting 5:00 - 7:30 p.m. In-person and Virtual (Zoom) | June 24 |

July 2026

- | | |
|--------------------------------------|---------|
| Independence Day, TCD Office Closed, | July 4 |
| WSCC Meeting, Skagit CD | July 16 |

NACD Summer Meeting, Grand Rapids, MI

July 17-22

TCD Board Work Session & Meeting 5:00 - 7:30 p.m. In-person and Virtual (Zoom)

July 22

Thurston County Fair, TCD Tabling

July 30-Aug 2

Informational Items



Executive Director's Report

Sarah Moorehead – Executive Director

March 25, 2026

Priority Initiatives Updates

2026 Legislative Session

The 2026 legislative session has come to an end and CD programs have largely fared well in this year's budget – with good foundations laid for the next biennium. Below is how funding landed for this fiscal year:

- **Forest Health and Wildfire Recovery** received an **increase** of \$1.25 million, that is an ongoing increase and will be reflected in the 2027-29 biennium budget as part of our base amount bringing this funding pool up to \$5 million per biennium.
- **Sustainable Farms and Fields** received a **decrease** of \$750,000 for this fiscal year that is ongoing and will be reflected per fiscal year in the 2027-29 biennium, effectively cutting the program budget in half. There will be work to do next legislative session to restore this funding.
- **No cuts were made to Conservation Technical Assistance (CTA) or Riparian Grant Program (RGP)!**
- No changes were made to the Capital Budget programs.

Conservation and Education Center

Staff have been working hard on funding development and property search/negotiations. We have recently applied for several multi-year funding sources to support several phases of the project:

- **\$3 million** from Congresswoman Strickland's Congressionally Funded Projects pool
- **\$3million** from Senator Patty Murray's Congressionally Directed Spending pool (this is a companion to Congresswoman Strickland's account)
- **\$50,000** to the Community Economic Revitalization Board (CERB) for conceptual design and financial strategy/fundraising development
- **\$1.3 million** from Department of Defense for CEC development, conservation enhancement, public engagement and storytelling

Strategic Plan Outreach

Strategic outreach to local jurisdictions is underway! This effort lead by the TCD Board will meet with local jurisdictions this spring to share TCD's newly developed strategic plan and visions for the Conservation and Education Center!

Attached to this report is the visual one-pager highlighting the elements of our new plan, along with the Conservation and Education Center.

Below is the schedule of upcoming meetings that TCD will be attending:

3/24 City of Olympia @ 6pm: City Council Chambers, Olympia City Hall, 601 4th Avenue E

3/31 Board of County Commissioners @ 2pm: 3000 Pacific Ave SE, Room 110, Olympia, WA 98501

4/7 City of Lacey @ 6pm: Council Chambers at Lacey City Hall, 420 College Street SE

4/14 City of Rainier @ 5pm: 102 Rochester Street West Rainier, WA 98576

4/14 City of Bucoda @ 7pm: Bucoda Community Center, 101A E 7th St, Bucoda, WA

4/21 City of Tumwater @ 7pm: Tumwater City Hall, Council Chambers, 555 Israel Rd. SW, Tumwater, Washington, 98501

4/28 City of Yelm @ 6pm: Council Chambers at Yelm City Hall, 106 2nd St. SE

5/12 City of Tenino @ 7pm: 149 Hodgden Street S, Tenino, WA 98589

District Operations

February 25, 2026 Board Meeting Action Items

- None

2026 Annual Plan Development

Attached to this report is a final draft of annual plan language for your review and consideration. Again, this is a language draft, which will be used by our team in a variety of formats for various purposes like visual aids, grant writing, communications strategies, etc.

This annual plan follows the spirit of the Strategic Plan adopted by the TCD Board. It mirrors the visionary and outcome-focused approach, while including a crosswalk of strategic priorities with TCD programs, services and important actions for 2026.

As our organization has grown exponentially, these guiding documents have grown in their sophistication and function. Together, the annual plan (roadmap for the year), paired with our annual budget (financial roadmap for the year), and the annual report (the collective impact data roll up across all programs and services for the year) provide a holistic look at how resources are used and goals are achieved on an annual basis at TCD. Nested underneath these steering documents are a large quantity of department workplans, grant deliverables, employee work plans, and databases tracking TCD's work and funding at a granular level. While this micro data is too vast and granular to be reflected in our steering documents individually, it is used in aggregate to tell stories, generate maps and develop statistics aligned with our strategic and annual plan targets.

2026 Election Update

Attached to this report is a memo provided by TCD's elections supervisor on the status of TCD's 2026 election process. A final update will be provided electronically once the final ballot count has been completed and verified.

2040 and Beyond Strategic Plan Summary

The mission of Thurston Conservation District is to protect and enhance the farms, forests, and natural landscapes of Thurston County. We envision healthy lands, thriving communities, and a sustainable future for all. Beginning in 2026, we're commencing work on a plan to achieve this vision for our community. By utilizing our core values of voluntary stewardship, integrity, innovation, collaboration, equity, and continued learning we plan to address four strategic priorities:



Protect & Restore Natural Resources

Stewardship at the landscape scale, restoring balance where it has been lost and protecting the natural resources that shape our region's identity are of paramount importance to our future. Through long-term land use policies, protection of habitat, forest, and farmlands, and advancing watershed health and agricultural viability, our lands and communities will thrive.

Build Climate Resilience & Disaster Preparedness

Together, we can equip our community to not just withstand climate impacts, but to emerge stronger, more adaptable, and more unified. Through the integration of climate-smart farming and conservation practices, promotion of green infrastructure and stormwater management, and expansion of wildfire prevention and disaster recovery.



Create Community, Access, & Equity

Belonging, health, and shared stewardship across our landscape will flourish by cultivating spaces where gardens, farms and nature become everyday resources. We are committed to empowering current and future generations to ensure that the benefits of conservation are felt broadly and meaningfully throughout our region.

Invest in Organizational Excellence & Leadership

Thurston Conservation District intends to be a leader in conservation and to facilitate regional collaboration through sufficient staff and funding capacity. This priority acknowledges that strong internal systems and visionary leadership are key to conservation work and will help us achieve the shared goals of a resilient and thriving Thurston County.



Find a full copy of our Strategic Plan, Annual Plans, and Annual Reports on our website by scanning this code!



 360-754-3588

 tcdadmin@thurstoncd.com

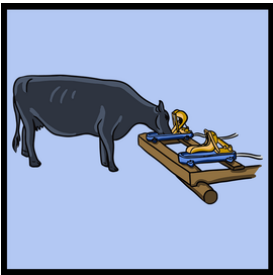
 thurstoncd.com



Thurston Conservation District

For more than 75 years, the Thurston Conservation District (TCD) has worked alongside farmers, landowners, and communities in Thurston County to voluntarily steward the region's natural resources. Through non-regulatory technical assistance, education, and conservation planning, the District helps landowners implement practices that protect soil health, improve water quality, and sustain working lands.

We are embarking on the creation of a Conservation and Education Center - the first of its kind in our region - that will convene, educate, and empower our community to steward our shared resources for generations to come! Together, with our partners, this campus will serve as a hub for our community to access everything they need to manage their landscapes.



See conservation projects up close and in action!
Demonstration sites to educate adults and youth about important conservation practices from native plantings to no-till drills and everything in between!



Expanded community access to native plants through propagation greenhouses, increased capacity for farm equipment rentals, and enough indoor and outdoor event space for educational programs, festivals, and other events!



A place where people from all walks of life can learn and plan together for the future of Thurston County's precious resources, farmlands, forests and communities.



Stay up to date on our Conservation & Education Center development by scanning this code!





Thurston Conservation District

Annual Plan 2026 | Executive Summary

Our Focus This Year

In 2026, Thurston Conservation District is building strong foundations for long-term impact—protecting the lands that define our region, helping communities prepare for climate change, expanding access to conservation, and strengthening the organization that makes this work possible.

Protect & Restore

We are safeguarding farms, forests, and waters through on-the-ground restoration, landowner partnerships, and land protection efforts—ensuring healthy landscapes for future generations.

Build Resilience

We are preparing communities for climate impacts by promoting climate-smart practices, wildfire preparedness, and green infrastructure that protects people, property, and ecosystems.

Create Community

We are expanding access to land, food, and stewardship opportunities—supporting community-led gardens, culturally relevant programs, and inclusive spaces where conservation belongs to everyone.

Invest in Excellence

We are strengthening leadership, staff capacity, and financial sustainability so that conservation work remains effective, accountable, and resilient over the long term.

How We Measure Success

We track acres restored, people engaged, funding invested locally, and organizational health—and pair these metrics with stories that show how conservation changes lives and landscapes.

Together, we are building a future where conservation is not just a program, but a shared way of life in Thurston County.



Thurston Conservation District

2026 Annual Plan

Purpose

The Annual Plan translates the Thurston Conservation District’s 2026–2030 & Beyond Strategic Plan into clear, actionable priorities for the year. It aligns staff work, Board oversight, funding decisions, and community engagement around shared goals—ensuring that daily work advances long-term conservation outcomes for Thurston County.

This plan reflects Phase I of the Strategic Plan (Launch & Foundation), with emphasis on building strong systems, establishing baselines, delivering early impact, and telling a clear story of stewardship.

To achieve our vision where Thurston County thrives as a connected landscape where healthy forests, farms, waters, and communities sustain one another for generations to come., we will build strong foundations, programs, partnerships and capacity.

How to Read This Plan

Each Strategic Priority includes:

Strategic Intent – why this priority matters

Annual Focus – what 2026 emphasizes

Key Methods – how the District delivers impact

Annual Actions & Deliverables – what will be accomplished

Measures of Success – how progress will be tracked

Strategic Priority 1: Protect & Restore Natural Resources

Strategic Intent

Thurston County’s farms, forests, wetlands, and waterways are the foundation of environmental health and community well-being. Growth pressures, land conversion, and climate impacts threaten these systems. This priority advances stewardship at the landscape scale—protecting working lands, restoring ecosystems, and improving watershed health so that clean water, productive soils, and thriving habitats endure for generations.

Annual Focus (2026)

Establish clear baselines for restoration, stewardship, and land protection.

Advance priority habitat and working lands projects.
Strengthen partnerships influencing land-use outcomes.

Key Methods

- Technical assistance and landowner support
- Habitat restoration and working lands implementation
- Land trust partnerships and easement education
- Successional planning and land matching
- Policy engagement and partnership coordination

Annual Actions & Deliverables

1. **Advance habitat restoration and working lands projects** across forests, farms, rivers, and wetlands through conservation project implementation.
2. **Build an in-house farmland preservation program** to be a leading convener of local working lands preservation efforts and increase land matching and successional planning for farmers and ranchers (South Sound FarmLink and Farm My Yard).
3. **Expand farmland protection** by increasing land trust capacity and conservation easement funding by developing a comprehensive and collaborative local land protection strategy.
4. **Engage landowners in conservation of endangered species habitat** (riparian, prairie, wetland, etc.), especially within the Sentinel Landscape boundary.
5. **Increase soil testing and equipment rental program access** to support conservation practice implementation (fencing, manure spreader, etc.).
6. **Naturalize marine shorelines** through bulkhead removals and soft shore alternatives (Shore Friendly Thurston).
7. **Demonstrate collective impact of voluntary stewardship** through the development of a comprehensive data tracking system to measure conservation activities.

Measures of Success

- Acres of land actively restored or under stewardship
 - Acres of restoration completed
 - Number of landowners and stewards assisted
 - Dollars invested in local conservation and stewardship
 - Before/after photos, project profiles, map visuals, and landowner stories
-

Strategic Priority 2: Build Climate Resilience & Disaster Preparedness

Strategic Intent

Thurston County is already experiencing the effects of climate change—drier summers, heavier storms, wildfire risk, and uncertain water supplies. This priority equips communities to prepare for, respond to, and adapt to these impacts through climate-smart practices, green infrastructure, wildfire mitigation and recovery. We recognize that all of our conservation activities address climate change, and we are committed to bringing innovation and climate science to the forefront of our efforts.

Annual Focus (2026)

Integrate climate resilience into existing conservation programs.

Expand disaster preparedness, wildfire education, and green infrastructure efforts.

Establish climate-related performance tracking.

Key Methods

- Climate-smart farming and regenerative conservation practices
- Irrigation efficiencies planning and infrastructure rehabilitation
- Green infrastructure and stormwater partnerships
- Community resource sharing and post-event response analysis

Annual Actions & Deliverables

1. **Engage K12 students in planning for the future** of resource stewardship (South Sound GREEN Congress, Teens in Thurston, Summer Teacher Institute).
2. Develop disaster preparedness and resilience **assistance tools for wildfire, flood and drought** (Wildfire Ready Neighbors, Firewise, etc.).
3. Build on community partner network to **enhance and share disaster and climate response resources** with local jurisdictions and emergency management agencies.
4. Conduct post-disaster surveys and response analysis (e.g., flooding, fire) to **understand direct impacts to land stewards and landscapes**.
5. **Advance urban and rural green infrastructure** and stormwater pilot projects.
6. Increase wild and working forest health assessments to **promote drought and fire resilience and increase carbon storage**.
7. **Connect community to science** and our landscape through volunteer events, storytelling, and education.

Measures of Success

- Number of next generation stewards empowered

- Percent of water savings from irrigation efficiencies
 - Climate resilience projects initiated or completed
 - Community resilience stories and testimonials
-

Strategic Priority 3: Create Community, Access & Equity

Strategic Intent

Healthy ecosystems and opportunities to connect with land should be accessible to everyone. This priority removes barriers to participation in conservation, supports community-led stewardship, and ensures that gardens, farms, and natural spaces are everyday resources for all. As a lead convener in our community, we tend and transfer knowledge that helps create connection to our land and its people develop their sense of place and belonging.

Annual Focus (2026)

Expand equitable access to land, food, and conservation programs.

Strengthen community-led and culturally relevant engagement.

Engage the next generation in voluntary stewardship.

Key Methods

- Community partnerships, internships and ambassador programs
- Education and outreach rooted in lived experience
- Access-focused programs and shared resources
- Inclusive, multilingual, and accessible communications

Annual Actions & Deliverables

1. **Develop a community of stewards** through the ‘United in Conservation’ campaign that actively promotes our organizational mission.
2. Host key stewardship and outreach events to **engage the community** in our programs and **demonstrate our impact** (Native Plant Festival, Harvest Festival, Grower’s Conference, etc.).
3. **Inspire new populations to engage in conservation**, by developing community gardens with garden ambassadors, Veteran’s internship programs, and career development pathways through our habitat restoration crew, etc.
4. **Improve ADA accessibility** of digital materials and our website, as well as improve visual signage for our building and outreach displays.
5. Host community events with inclusive design (food, kid’s activities, bus line, etc.) to **bring conservation education to all**.
6. **Strengthen partnerships** with community-led organizations, coalitions, and non-profit organizations to lift up collaborators who share our mission.

7. Generate storytelling content with our community members to **share the power of Voluntary Stewardship** in Thurston County through videos, social media campaigns and innovative marketing strategies.

Measures of Success

- Number of community members engaged
 - Engagement with underserved communities
 - Collective impact data across Thurston County
 - Testimonials, surveys, and visual storytelling
-

Strategic Priority 4: Invest in Organizational Excellence & Leadership

Strategic Intent

Strong conservation outcomes depend on a strong organization. This priority ensures that the District operates as a trusted regional leader with skilled staff, effective systems, and sufficient and sustainable funding.

Annual Focus (2026)

Strengthen internal systems, governance, and leadership capacity.

Secure and diversify funding.

Lay groundwork for long-term infrastructure investments.

Key Methods

- Leadership development and policy collaboration
- Staff and Board capacity building
- Financial sustainability and diversification
- Process improvement and accountability systems

Annual Actions & Deliverables

1. **Diversify revenue** and develop a system of rates and charges that aligns with our community's conservation needs and supports consistency of programs and services.
2. **Advance Conservation & Education Center** planning and fundraising to secure land, begin campus design and solidify partnership network.
3. **Maintain clean audits and timely public disclosure** responses as a component of our commitment to efficient and transparent governance.

4. Develop and implement organizational communications strategy to **increase recognition, awareness and support of Thurston Conservation District** activities, initiatives and funding.
5. Educate and strengthen relationships with legislators and local decision makers to **expand conservation and natural resources funding and policies**.
6. Complete an **overhaul of Policies & Procedures manual** to ensure alignment with most recent Collective Bargaining Agreement and updates to legislation.
7. Deliver excellent professional development opportunities for all staff and Board members to **maintain high-level professional expertise**.

Measures of Success

- Financial health indicators and clean audits
 - Revenue longevity, diversification and funding leveraged
 - Staff and Board participation in professional development
 - Organizational policy and leadership stories
-

Strategic Plan Phase 1: Launch and Foundation

During this phase, the focus of this year is to establish systems, baselines, and partnerships, including the following:

- Develop Annual Plan format linking strategic plan priorities and performance indicators to yearly work plans.
 - Build internal data dashboards to track metrics (funding, acres, participation, etc.).
 - Conduct baseline assessments for: % acres in restoration, community participation in voluntary stewardship
 - Secure initial multi-year conservation funding commitments.
 - Identify pathways to accomplish key actions and initiatives.
 - Assess capacity and organizational needs to achieve strategic plan goals.
-

Storytelling, Evaluation & Reporting

Each year, TCD pairs quantitative metrics with qualitative stories to demonstrate real-world impact. Data is supported by:

- Project profiles and maps
- Before/after photos
- Landowner and partner testimonials

- Multi-media platforms (social media, video, articles, podcasts, newsletters, print materials, advertising, etc.)
- Community stories highlighting stewardship and the collective impact of our programs and services

Progress is reviewed through an annual adaptive management cycle: Plan → Implement → Evaluate → Learn → Adapt.

Thurston Conservation District 2026 Board of Supervisor Election Update Memo



To: TCD Board of Supervisors
From: Susan Shelton, TCD Election Supervisor
Cc: S. Moorehead, Kirsten Hill, S. Barashkoff, N. Carman-White
Date: March 17, 2026
Subject: 2026 Board of Supervisor Election Update

Per your request, I am happy to provide a brief update on the 2026 Board of Supervisor Election process.

Voting

Election day is today, March 17. Mailed-in ballots must be postmarked by March 17th to be counted.

For the 2026 election, a total of 216 ballots were requested and mailed out to voters. As of yesterday, 130 completed ballots have been returned.

Signature Verification and Ballot Counting

On March 27th, the Thurston County Auditor's office will verify the signatures of returned ballots, and the polling officers will count verified ballots. We expect to announce the preliminary results of the 2026 election on March 27th.